

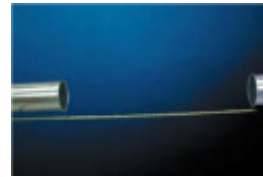
Large Telescopic Pipe Instruction Sheet

For OK10" pipe and up

OK Adjustable Tele Pipe System: One of the most important benefits is that it is not necessary to take exact measurements before making the final cut. The adjustable tele is an 11-inch section of pipe that has a slightly larger diameter than a standard OK duct.

To use the adjustable tele, simply:

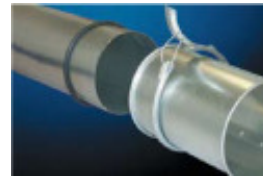
1. Measure the distance you want to span.
2. Cut the pipe (NOT the 11" Tele) approximately 4" shorter than the length necessary to complete the span.
3. Make sure the cut is free of burs and that it maintains its round shape.
4. Slip the cut end of the pipe into the adjustable tele.
5. Clamp one end of the assembly into place. Be sure that the 11-inch tele is downstream of the cut piece.
6. Slide the pipe into the tele to the desired length.
7. Slide the o-ring across the rolled edge of the 11-inch tele so that it is around the cut piece of pipe. Roll it until it is seated against the rolled edge of the tele. The o-ring will form a seal and provide a rolled surface for the OK clamp to grab.
8. Use a standard clamp to connect the rolled edge of the adjustable tele and the o-ring together.
9. Once in place, you can re-adjust the length of the assembly by releasing the clamp and changing the length of the pipe that is inserted into the tele.
10. **IMPORTANT SAFETY NOTE:** To ensure a strong, safe and stable system, there must always be at least four inches of duct inserted into the adjustable tele.



Measure



Cut pipe



Slide nipple on



Clamp together



Finish