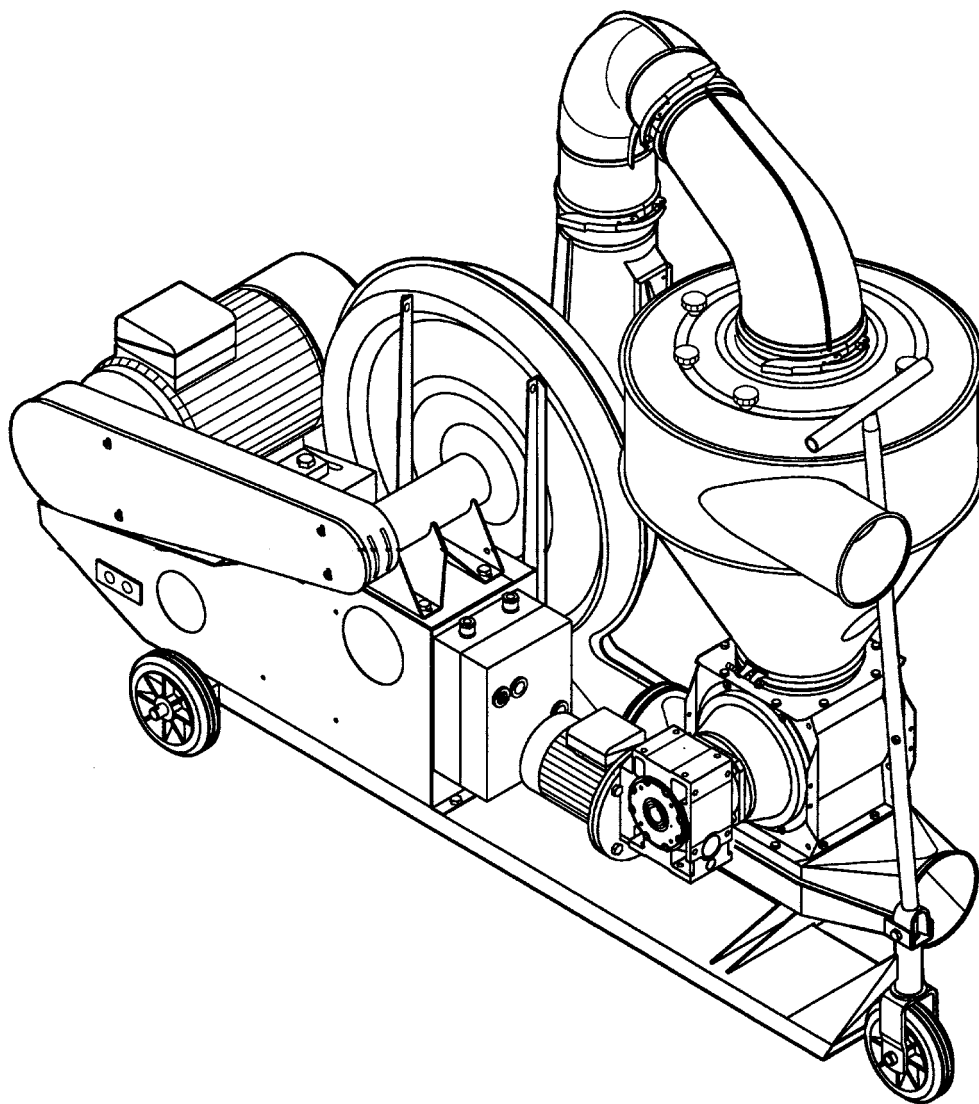


SUC 100/150/200E - Industry Suction Blowers



Spare parts list

SUC 100 E

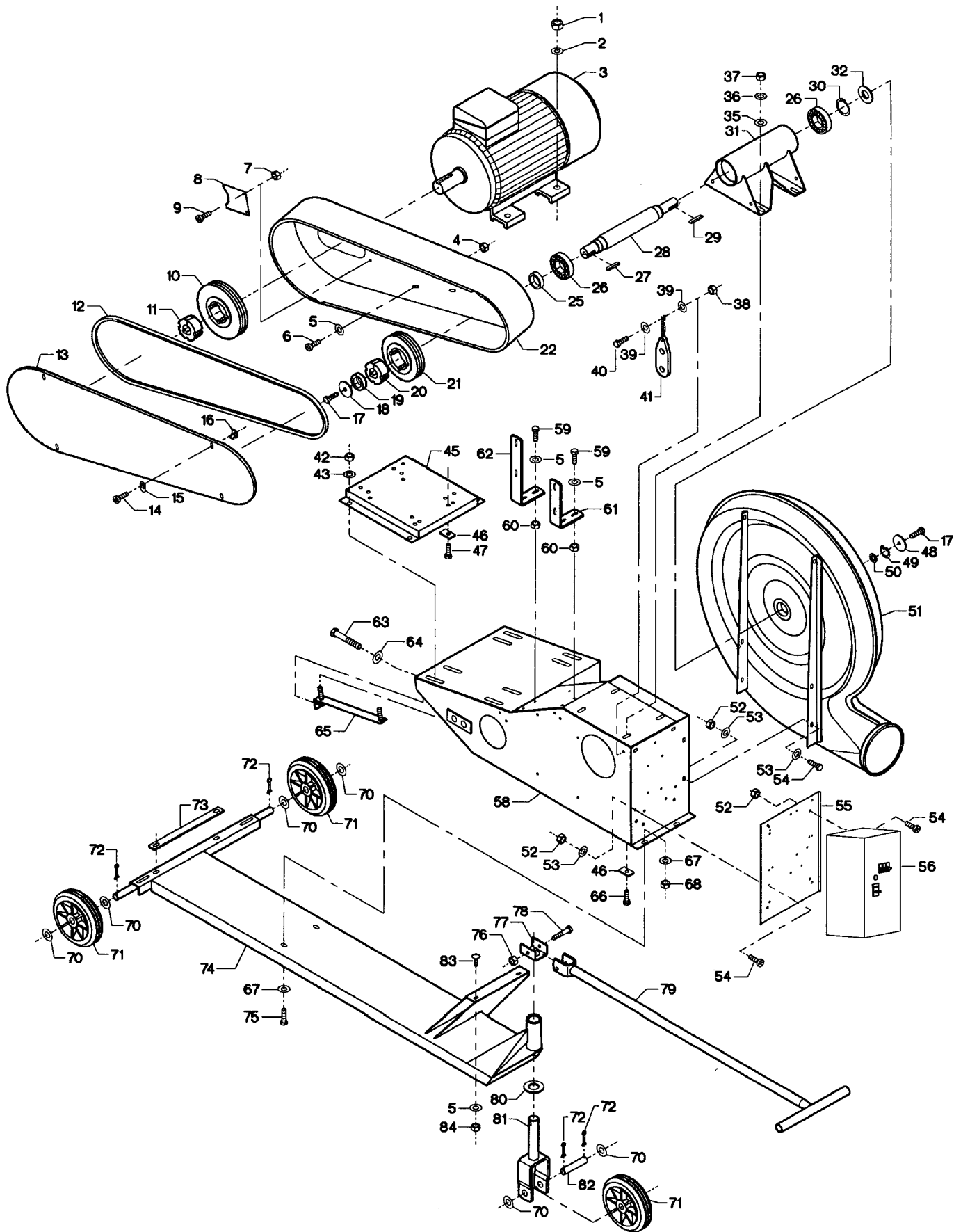


Fig.	Part no.	Pieces	Notes
1	100 315 013	4	Nut M10
2	100 331 006	4	Flat washer M10
3	100 501 064	1	Motor 132SX2 - B3 - 7.5 KW - 3x400 V - 50 Hz
4	100 316 075	4	Flanged nut M6
5	100 331 004	10	Flat washer M6
6	100 321 015	4	Torx screw M6 x 16 mm
7	100 316 002	2	Lock nut M6
8	121 075 062	1	
9	100 321 013	2	Torx screw M6 x 10 mm
10	121 075 061	1	V-belt pulley SPZ 165 with 3 grooves, TB-2012
11	123 000 468	1	TB-2012-38
12	100 403 241	3	Raw edge moulded notch V-belt SPZ-1787
13	121 123 232	1	
14	100 321 010	4	Torx screw M5 x 12 mm
15	121 000 686	4	
16	121 000 402	4	
17	100 306 030	2	Set screw M10 x 30 mm
18	121 000 060	1	Flat washer ø53/11 x 3 mm
19	123 000 378	1	Spacer
20	123 000 183	1	TB-2012-32
21	121 081 164	1	V-belt pulley SPZ 132 with 3 grooves, TB-2012
22	121 081 170	1	
25	113 026 064	1	Spacer
26	100 401 072	2	Ball bearing # 6208 - 2RS1/C3HT51
27	100 405 014	1	Key 10 x 8 x 28 mm
28	113 026 063	1	
29	100 405 015	1	Key 8 x 7 x 36 mm
30	100 407 012	1	Circlip ø40 x 1.75 mm
31	113 026 067	1	
Cpl:	121 090 044	1	Incl. Fig. 25 - 31
32	121 090 038	4	Sealing ring
35	100 331 006	4	Flat washer M10
36	100 332 004	4	Star washer M10
37	100 315 013	4	Nut M10
38	100 316 002	1	Lock nut M6
39	100 331 004	2	Flat washer M6
40	100 306 001	1	Set screw M6 x 20 mm
41	100 511 000	1	Unloading clamp
42	100 315 016	4	Nut M12
43	100 332 005	4	Star washer M12
45	121 066 029	1	
46	121 000 058	8	Washer 25 x 40 x 5 mm/ø11 mm
47	100 308 037	4	Set screw M10 x 40 mm
48	121 000 060	1	Flat washer ø53/11 x 3 mm
49	100 407 001	1	Circlip ø28 x 1.2 mm
50	121 000 027	1	Flat washer ø27.8/17 x 2 mm
51	121 090 047	1	
52	100 316 003	12	Lock nut M8
53	100 331 005	12	Flat washer M8
54	100 306 014	12	Set screw M8 x 16 mm
55	121 089 126	1	
56	100 503 131	1	Motor control, 3x400 V - 7.5 kW + 0.55/0.75 kW
58	121 081 142	1	
59	100 306 001	4	Set screw M6 x 20 mm
60	100 316 002	4	Lock nut M6
61	121 081 179	1	
62	121 081 180	1	
63	100 308 017	2	Set screw M12 x 130 mm
64	100 331 007	2	Flat washer M12
65	121 080 133	2	
66	100 306 029	4	Set screw M10 x 25 mm
67	100 331 006	8	Flat washer M10
68	100 315 013	4	Nut M10
70	100 331 009	6	Flat washer M20
71	100 412 007	3	Wheel MA-EN 508 55/20-200/50
72	100 333 004	4	Split pin ø5 x 30 mm
73	121 083 025	1	
74	121 089 102	1	
75	100 308 004	4	Set screw M10 x 20 mm
76	100 316 004	1	Lock nut M10
77	121 132 066	1	
78	100 306 037	1	Bolt M10 x 65 mm
79	121 132 067	1	
80	100 323 020	1	Flat washer ø60/33 x 5 mm
81	121 089 103	1	
82	121 089 101	1	
83	100 311 000	2	Coach bolt M6 x 15 mm
84	100 315 028	2	Nut M6

SUC 150 E

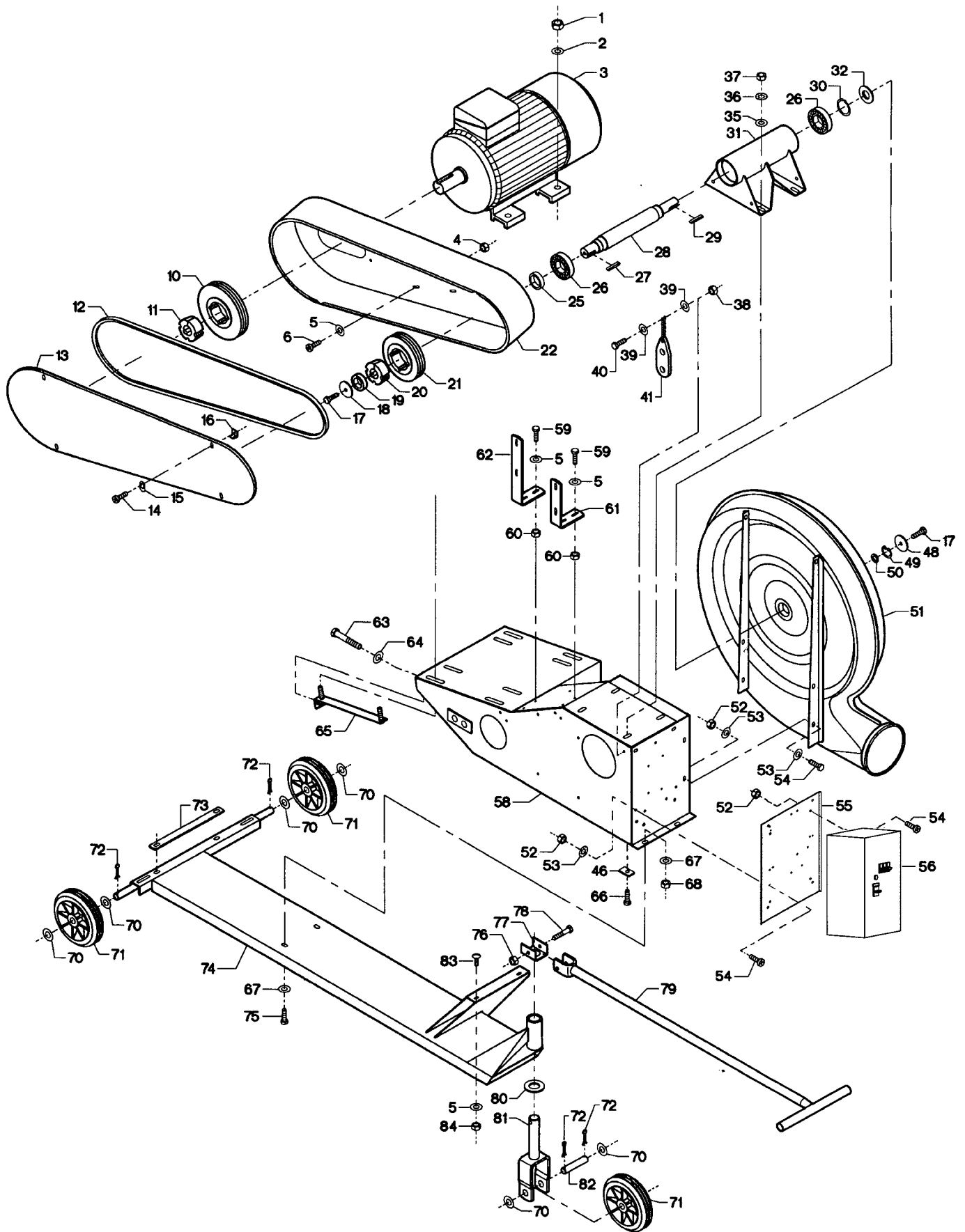


Fig.	Part no.	Pieces	Notes
1	100 315 016	4	Nut M12
2	100 331 005	4	Flat washer M12
3	100 501 019	1	Motor 160M2 - B3 - 11 kW - 3x400 V - 50 Hz
	100 551 089	1	Motor 254T - 15 HP 460 V - 60 Hz - 3500 rpm - M2394T
	100 551 019	1	Motor 254T - 15 HP 575 V - 60 Hz - 3500 rpm - M2394T5
4	100 316 075	4	Flanged nut M6
5	100 331 004	10	Flat washer M6
6	100 321 015	4	Torx screw M6 x 16 mm
10	121 081 167	1	V-belt pulley SPZ 200 with 3 grooves, TB-2012
11	123 000 471	1	TB-2012-42
12	123 000 298	1	TB-2012-1 5/8 - Key 3/8" H9
13	100 403 241	3	Raw edge moulded notch V-belt SPZ-1787
14	121 123 232	1	
15	100 321 010	4	Torx screw M5 x 12 mm
	121 000 686	4	
16	121 000 402	4	
17	100 306 030	2	Set screw M10 x 30 mm
18	121 000 060	1	Flat washer ø53/11 x 3 mm
19	123 000 378	1	Spacer
20	123 000 183	1	TB-2012-32
21	121 081 164	1	V-belt pulley SPZ 132 with 3 grooves, TB-2012 (for 50 Hz models)
	121 081 165	1	V-belt pulley SPZ 160 with 3 grooves, TB-2012 (for 60 Hz models)
	121 075 061	1	V-belt pulley SPZ 165 with 3 grooves, TB-2012 (for 60 Hz models)
22	121 081 170	1	
25	113 026 064	1	Spacer
26	100 401 072	2	Ball bearing # 6208 - 2RS1/C3HT51
27	100 405 014	1	Key 10 x 8 x 28 mm
28	113 026 063	1	
29	100 405 015	1	Key 8 x 7 x 36 mm
30	100 407 012	1	Circlip ø40 x 1.75 mm
31	113 026 067	1	
Cpl:	121 090 044	1	Incl. Fig. 25 - 31
32	121 090 038	4	Sealing ring
35	100 331 006	4	Flat washer M10
36	100 332 004	4	Star washer M10
37	100 315 013	4	Nut M10
38	100 316 002	1	Lock nut M6
39	100 331 004	2	Flat washer M6
40	100 306 001	1	Set screw M6 x 20 mm
41	100 511 000	1	Unloading clamp
46	121 000 058	8	Washer 25 x 40 x 5 mm/ø11 mm
47	100 308 037	4	Set screw M10 x 40 mm
48	121 000 060	1	Flat washer ø53/11 x 3 mm
49	100 407 001	1	Circlip ø28 x 1.2 mm
50	121 000 027	1	Flat washer ø27.8/17 x 2 mm
51	121 090 047	1	
52	100 316 003	12	Lock nut M8
53	100 331 005	12	Flat washer M8
54	100 306 014	12	Set screw M8 x 16 mm
55	121 089 126	1	
56	100 503 132	1	Motor control, 3x400 V - 11 kW + 0.75 kW
58	121 081 142	1	
59	100 306 001	4	Set screw M6 x 20 mm
60	100 316 002	4	Lock nut M6
61	121 081 179	1	
62	121 081 180	1	
63	100 308 017	2	Set screw M12 x 130 mm
64	100 331 007	2	Flat washer M12
65	121 080 133	2	
66	100 306 029	4	Set screw M10 x 25 mm
67	100 331 006	8	Flat washer M10
68	100 315 013	4	Nut M10
70	100 331 009	6	Flat washer M20
71	100 412 007	3	Wheel MA-EN 508 55/20-200/50
72	100 333 004	4	Split pin ø5 x 30 mm
73	121 083 025	1	
74	121 089 102	1	
75	100 308 004	4	Set screw M10 x 20 mm
76	100 316 004	1	Lock nut M10
77	121 132 066	1	
78	100 306 037	1	Bolt M10 x 65 mm
79	121 132 067	1	
80	100 323 020	1	Flat washer ø60/33 x 5 mm
81	121 089 103	1	
82	121 089 101	1	
83	100 311 000	2	Coach bolt M6 x 15 mm
84	100 315 028	2	Nut M6

SUC 200 E

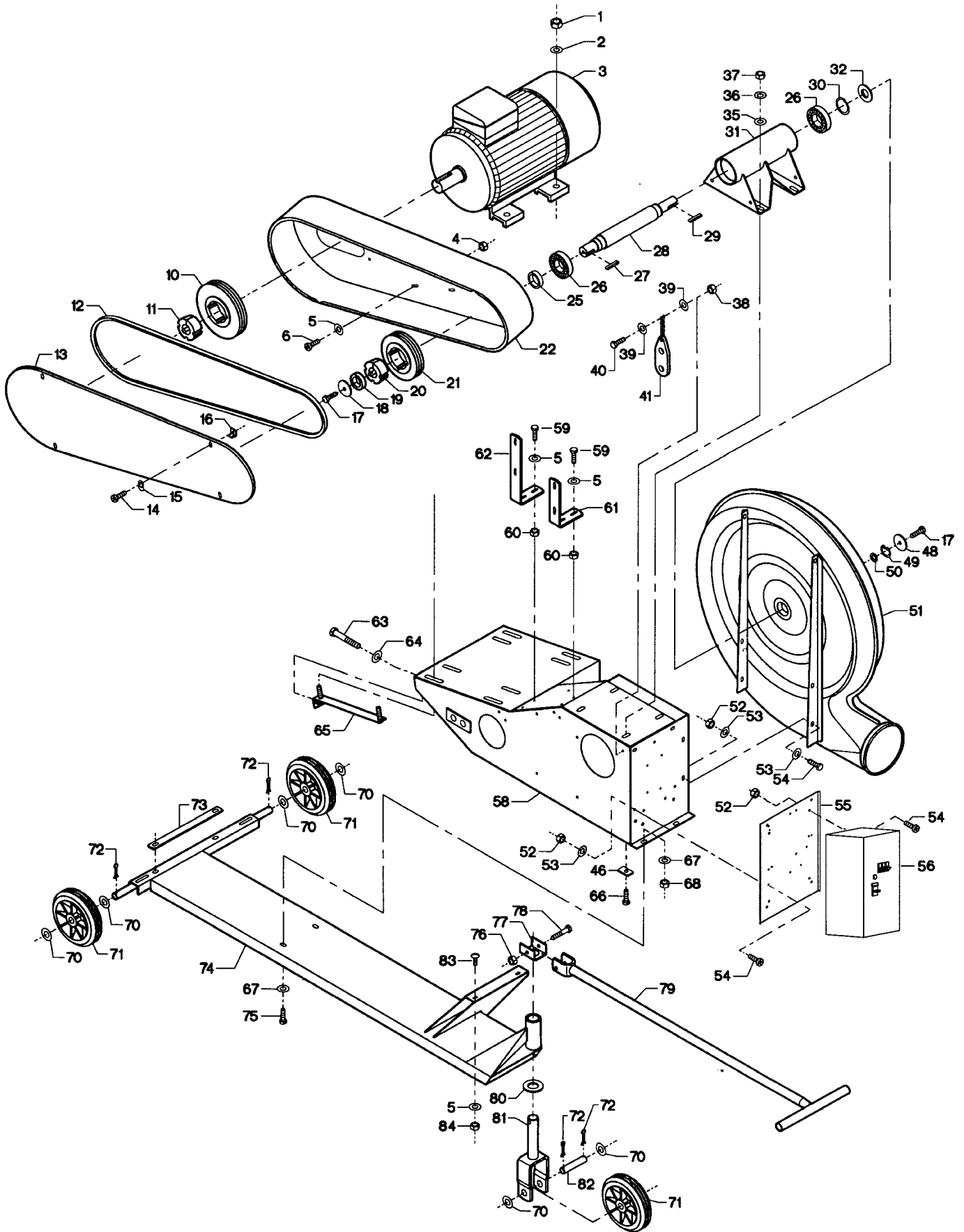


Fig.	Part no.	Pieces	Notes
1	100 315 016	4	Nut M12
2	100 331 007	4	Flat washer M12
3	100 501 091	1	Motor 160X2 - B3 - 15 KW - 3x400 V - 50 Hz
	100 551 069	1	Motor 256T - 20 HP 460 V - 60 Hz - 3500 rpm - M4106T
	100 551 070	1	Motor 256T - 20 HP 575 V - 60 Hz - 3500 rpm - M4106T5
4	100 316 075	4	Flanged nut M6
5	100 331 004	10	Flat washer M6
6	100 321 015	4	Torx screw M6 x 16 mm
10	121 090 067	1	V-belt pulley SPZ 224 with 3 grooves, TB-2012
11	123 000 471	1	TB-2012-42
12	123 000 298	1	TB-2012-1 5/8 - Key 3/8" H9
13	100 403 241	3	Raw edge moulded notch V-belt SPZ-1787
14	121 123 232	1	
15	100 321 010	7	Torx screw M5 x 12 mm
	121 000 686	4	
16	121 000 402	4	
17	100 306 030	2	Set screw M10 x 30 mm
18	121 000 060	1	Flat washer ø53/11 x 3 mm
19	123 000 378	1	Spacer
20	123 000 183	1	TB-2012-32
21	121 081 164	1	V-belt pulley SPZ 132 with 3 grooves, TB-2012 (for 50 Hz models)
	121 081 165	1	V-belt pulley SPZ 160 with 3 grooves, TB-2012 (for 60 Hz models)
22	121 081 170	1	
25	113 026 064	1	Spacer
26	100 401 072	2	Ball bearing # 6208 - 2RS1/C3HT51
27	100 405 014	1	Key 10 x 8 x 28 mm
28	113 026 063	1	
29	100 405 015	1	Key 8 x 7 x 36 mm
30	100 407 012	1	Circlip ø40 x 1.75 mm
31	113 026 067	1	
Cpl:	121 090 044	1	Incl. Fig. 25 - 31
32	121 090 038	4	Sealing ring
35	100 331 006	4	Flat washer M10
36	100 332 004	4	Star washer M10
37	100 315 013	4	Nut M10
38	100 316 002	1	Lock nut M6
39	100 331 004	2	Flat washer M6
40	100 306 001	1	Set screw M6 x 20 mm
41	100 511 000	1	Unloading clamp
46	121 000 058	8	Washer 25 x 40 x 5 mm/ø11 mm
47	100 308 037	4	Set screw M10 x 40 mm
48	121 000 060	1	Flat washer ø53/11 x 3 mm
49	100 407 001	1	Circlip ø28 x 1.2 mm
50	121 000 027	1	Flat washer ø27.8/17 x 2 mm
51	121 090 047	1	
52	100 316 003	12	Lock nut M8
53	100 331 005	12	Flat washer M8
54	100 306 014	12	Set screw M8 x 16 mm
55	121 089 126	1	
56	100 503 133	1	Motor control, 3x400 V - 15 kW + 0.75 kW
58	121 081 142	1	
59	100 306 001	4	Set screw M6 x 20 mm
60	100 316 002	4	Lock nut M6
61	121 081 179	1	
62	121 081 180	1	
63	100 308 017	2	Set screw M12 x 130 mm
64	100 331 007	2	Flat washer M12
65	121 080 133	2	
66	100 306 029	4	Set screw M10 x 25 mm
67	100 331 006	8	Flat washer M10
68	100 315 013	4	Nut M10
70	100 331 009	6	Flat washer M20
71	100 412 007	3	Wheel MA-EN 508 55/20-200/50
72	100 333 004	4	Split pin ø5 x 30 mm
73	121 083 025	1	
74	121 089 102	1	
75	100 308 004	4	Set screw M10 x 20 mm
76	100 316 004	1	Lock nut M10
77	121 132 066	1	
78	100 306 037	1	Bolt M10 x 65 mm
79	121 132 067	1	
80	100 323 020	1	Flat washer ø60/33 x 5 mm
81	121 089 103	1	
82	121 089 101	1	
83	100 311 000	2	Coach bolt M6 x 15 mm
84	100 315 028	2	Nut M6

SUC 100/150/200 E

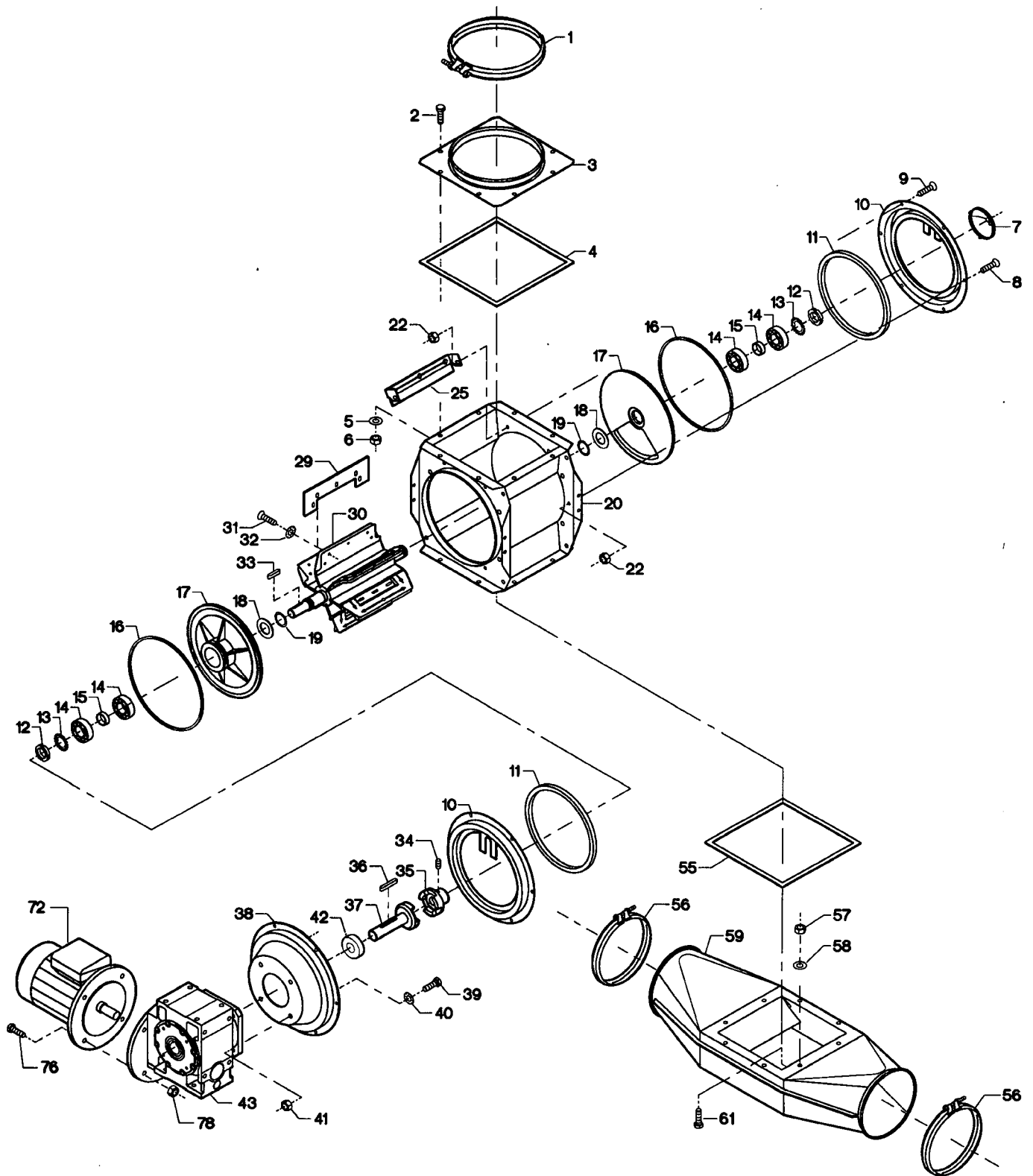


Fig.	Part no.	Pieces	Notes
1	122 050 237	1	Bolt clamp OK200, for spec. safety joint
2	100 306 014	8	Set screw M8 x 16 mm
3	121 100 422	1	
4	100 202 011	-	7x8 mm. Order 0.9 m
5	100 331 005	8	Flat washer M8
6	100 315 012	8	Nut M8
7	121 100 324	1	
8	100 321 014	10	Torx screw M6 x 12 mm
9	100 321 015	2	Torx screw M6 x 16 mm
10	121 100 311	2	
11	121 100 269	2	
12	100 323 308	2	Nut M25 x 1.5 mm, KM 5
13	100 407 045	2	Lock washer MB 5
14	100 401 075	4	Ball bearing # 6005 - 2Z
15	121 100 630	2	
16	100 413 142	2	O-ring ø180 x 4 mm
17	121 100 472	2	
18	100 402 024	2	
19	100 413 092	2	O-ring ø39.2 x 3 mm
20	121 100 319	1	
22	100 316 075	12	Nut M6
25	121 100 443	1	
29	121 100 442	6	
30	121 100 439	1	
31	100 321 010	30	Crosshead screw M5 x 12 mm
32	100 332 001	30	Star washer M5
Cpl:	121 100 438	1	Complete incl. items 29 - 32
33	100 405 019	1	Key 6 x 6 x 28 mm
Cpl:	121 100 429	1	Complete incl. items 2 - 33 + 38
34	100 322 010	1	Stop screw M6 x 8 mm
35	121 100 378	1	
36	100 405 013	1	Key 8 x 7 x 50 mm
37	121 100 571	1	
38	121 100 417	1	
39	100 306 031	4	Set screw M10 x 35 mm
40	100 332 020	4	Star washer
41	100 316 004	4	Lock nut M10
42	121 100 644	1	
43	100 505 153	1	Gear SK1 SI50F 1=20 IEC 80/B5
	100 505 154	1	Gear SK1 SI50F 1=25 IEC 80/B5
	100 505 155	1	Gear SK1 SI50F 1=30 IEC 80/B5
	100 505 156	1	Gear SK1 SI50F 1=40 IEC 80/B5
	100 505 157	1	Gear SK1 SI50F 1=60 IEC 80/B5
55	100 202 011	-	7 x 8 mm. Order 0.9 m
56	122 001 078	2	Bolt clamp OK160, for spec. safety joint
57	100 315 012	8	Nut M8
58	100 331 005	8	Flat washer M8
59	121 100 427	1	
61	100 306 014	8	Set screw M8 x 15 mm
72	100 505 010	1	Motor 80 G4 B5 0.75 kW 1400 Rpm-400 V-50 Hz (for SUC 100/150/200)
	100 551 093	1	Motor D80D-0.75 HP-575V-60 Hz-1725 Rpm-MVM3542D5 (for SUC 150)
	100 551 092	1	Motor D80D-0.75 HP-460V-60 Hz-1725 Rpm-MVM3542D (for SUC 150)
	100 551 117	1	Motor D80D-1.0 HP-575V-60 Hz-1725 Rpm-MVM3546D5 (for SUC 200)
	100 551 116	1	Motor D80D-1.0 HP-460V-60 Hz-1725 Rpm-MVM3546D (for SUC 200)
76	100 306 031	4	Set screw M10 x 35mm
78	100 316 004	4	Lock nut M10

SUC 100/150/200 E

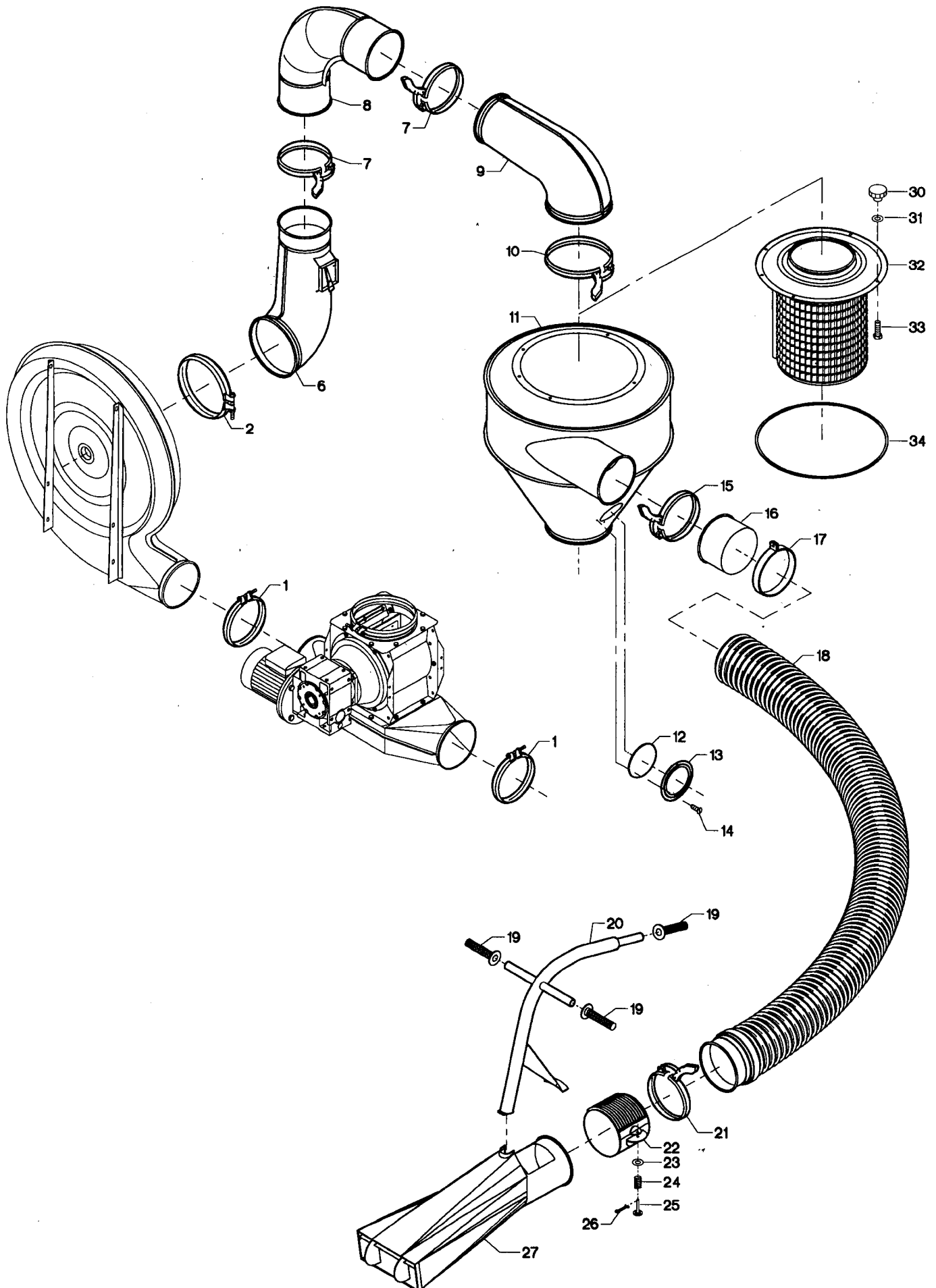


Fig.	Part no.	Pieces	Notes
1	122 001 078	2	Bolt clamp OK160, for spec. safety joint
2	122 050 110	1	Bolt clamp OK200
6	121 120 378	1	
7	122 000 825	2	Quick release clamp OKR160
8	121 089 107	1	Bend 90° OK160
9	121 140 175	1	Bend 90°, OK160 to OK200
10	122 050 077	1	Quick release clamp OK200
11	121 000 711	1	IC-cyclone
12	121 000 090	1	Inspection window
13	121 000 089	1	Inspection window frame
14	100 323 011	4	Self-tapping screw # 8 x 5/16"
15	122 000 825	2	Quick release clamp OKR160
16	121 000 775	2	
17	100 420 172	2	Clamp
Cpl:	121 000 645	1	Suction hose complete, incl. items 15 - 18
19	100 414 016	3	
20	121 130 147	1	
21	122 000 825	2	Quick release clamp OKR160
22	121 130 100	1	Air regulator
23	100 331 013	1	Flat washer M6
24	121 120 116	1	Spring
25	121 120 113	1	Push rod
26	100 333 000	1	Split pin ø2 x 15 mm
27	121 130 178	1	Suction head
Cpl:	121 130 212	1	Suction head complete, incl. items 19 - 27
30	100 414 050	5	Star handle 1513-40-M8
31	100 331 014	5	Washer M8
32	121 000 714	1	
33	100 308 002	5	Set screw M8 x 25 mm
34	121 100 303	-	Sealing strip. Indicate length 1.3 m when ordering

Kongskilde Industries A/S

Tel. +45 33 68 35 00

mail@kongskilde-industries.com

www.kongskilde-industries.com