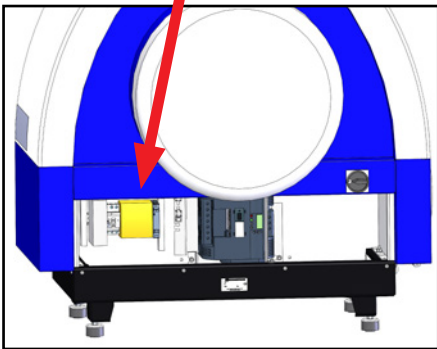


MultiAir FC / FCE

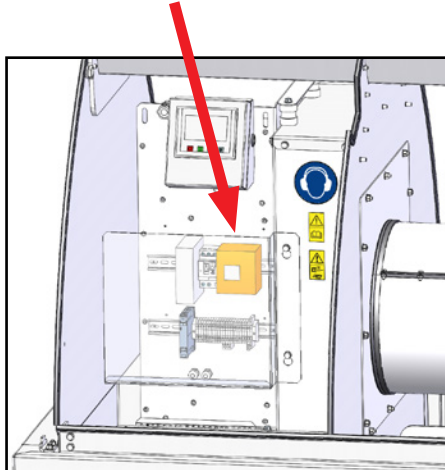
Software installation guide

Update of PLC and operators panel software with Simatic SD card and USB stick (Siemens V20 frequency converters)

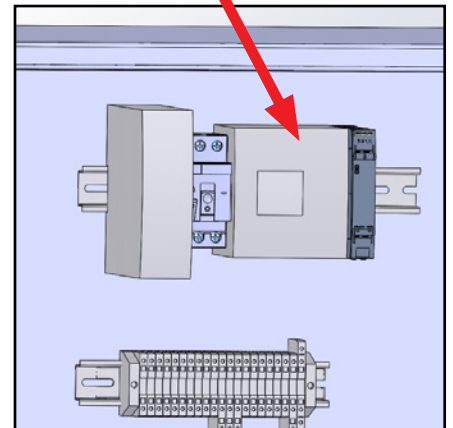
Location of PLC unit in FC 2000 blowers



Location of PLC unit in FC 4000 blowers



Location of PLC unit in FCE blower



1. Turn off the main switch and remove/open doors
2. Open the lid on the PLC printed "Simatic S7-1200" (only for MA 3500/4000 blowers)

5. When the PLC flashes yellow in the MAINT LED and the operators panel is on the start screen, turn off the main switch (only for MA 3500/4000 blowers)

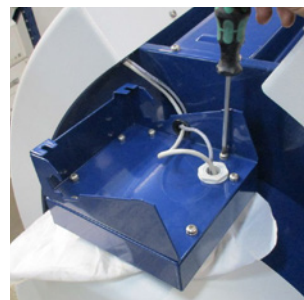


3. Insert the Simatic SD card with firmware into the PLC (only for MA 3500/4000 blowers)

6. Remove the Simatic SD card with firmware in the PLC (only for MA 3500/4000 blowers), and insert the other SD card

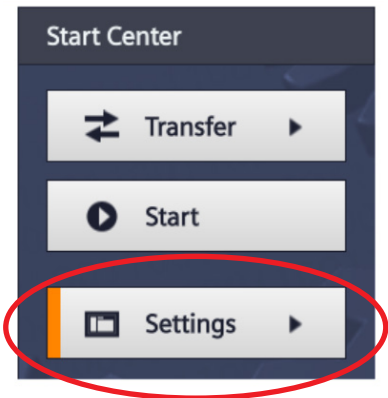


7. Open the housing for the operators panel and insert the USB stick, with the LED facing upwards

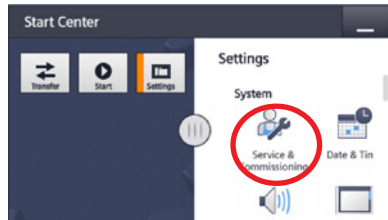


4. Turn on the main switch (only for MA 3500/4000 blowers)

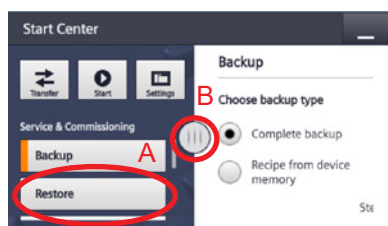
- Turn on the main switch
- Wait for the operators panel to boot up, and select Settings as soon as it is possible



- Select "Service & Commissioning"



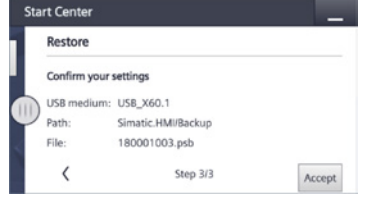
- Select "Restore" in the menu



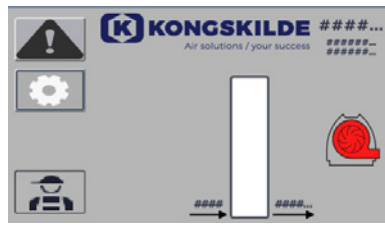
- Press the arrow at the bottom right 2 times, through step 1 and step 2



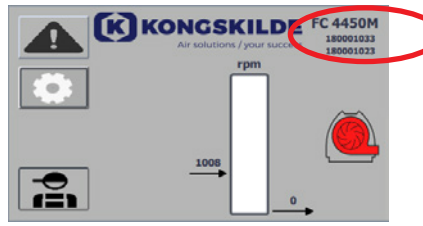
- In step 3, press "Accept"



- When the PLC flashes yellow in the MAINT LED and the operators panel is on the start screen, turn off the main switch



- When the operators panel and PLC are switched off, remove the SD card and USB stick
- Turn on the main switch and wait for the operators panel to start
- Verify that the version numbers in the upper right corner of the operators panel match the numbers on the SD card and USB stick



- Reassemble the housing for the operators panel
- Fit the label with new version numbers on the blower to the right of the nameplate
- The blower's specific settings are set (e.g. set point)
- NB - In case the operators panel shows # instead of the version numbers, the software are incorrectly installed

