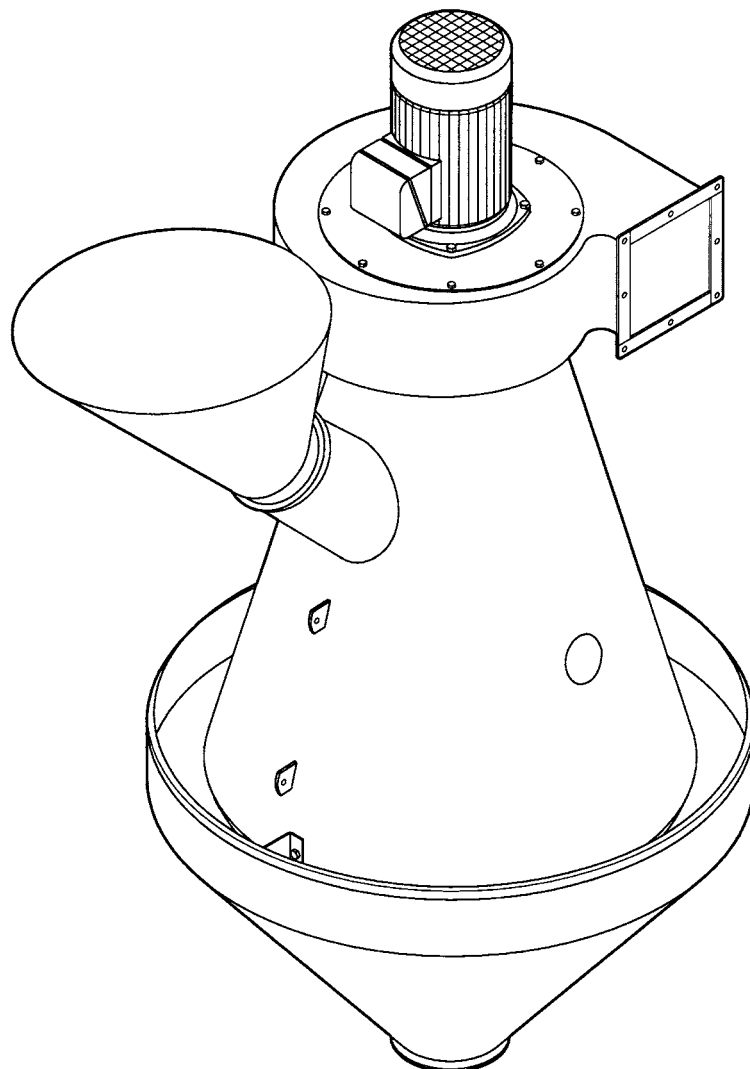


# **KIA 60**

## Aspirator



Spare parts list

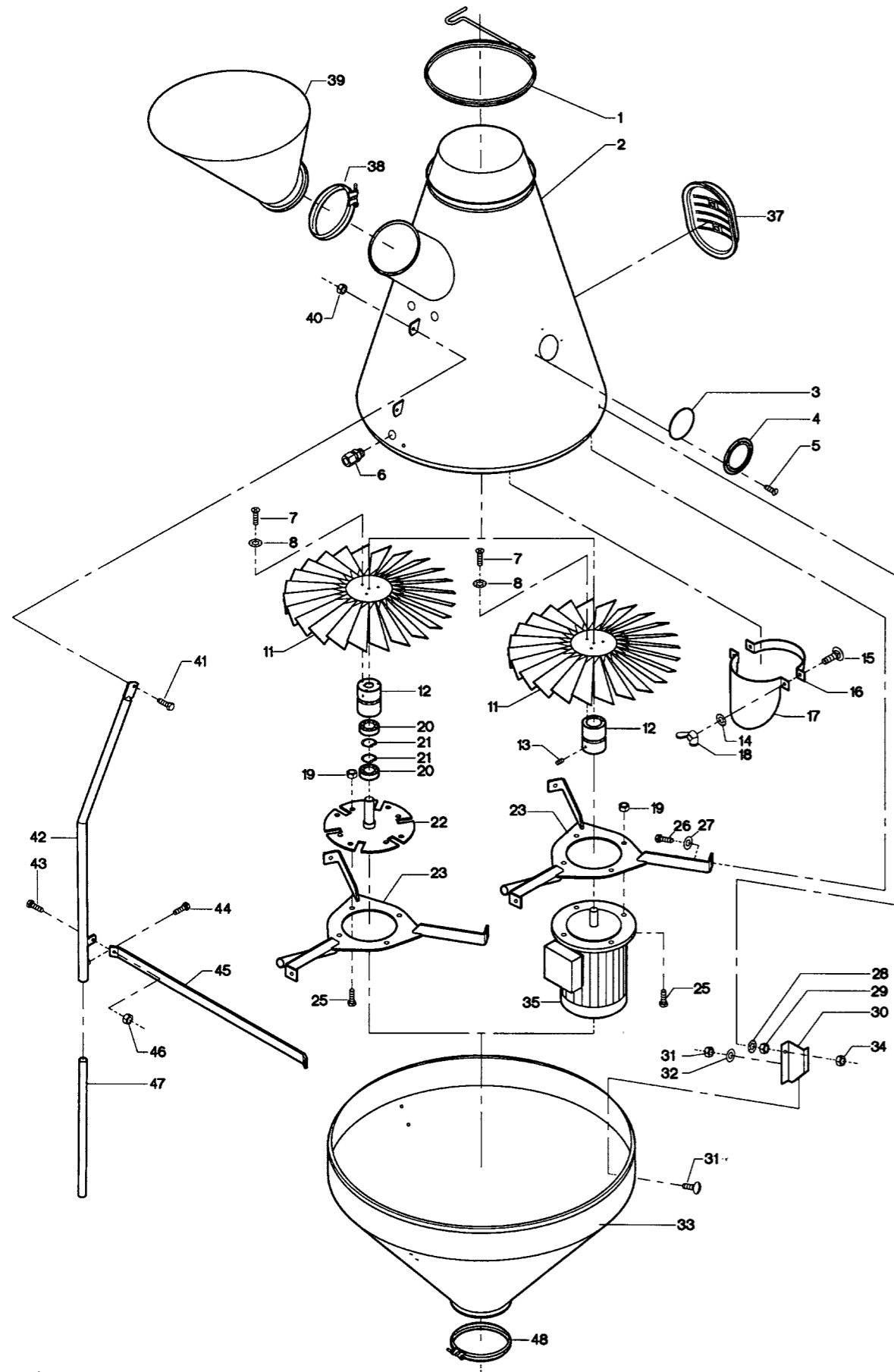


Fig.	Part no.	Pieces	Notes
1	131 040 049	1	Clamp with screw OK375
2	131 041 036	1	
3	121 000 090	1	
4	121 000 089	1	
5	100 323 011	4	
6	100 511 129	3	Torx screw M6 x 16 mm
7	100 321 015	3	
8	100 332 002	3	
11	131 040 000	1	
12	131 041 026	1	
13	131 041 035	1	F. 50 Hz motor
14	100 322 026	1	
15	100 331 005	1	
16	100 311 018	2	
16	122 050 139	1	
17	131 041 082	1	Wing nut M8
18	100 316 001	2	
19	100 316 004	4	
20	100 401 002	2	
21	100 407 005	2	
22	131 041 029	1	F. 50 Hz motor
23	131 041 032	1	
25	131 041 037	1	
26	100 306 029	4	
26	100 304 024	3	
27	100 331 087	3	Washer M10
28	100 332 004	3	
29	100 315 013	3	
30	131 041 040	3	
31	100 311 016	6	
32	100 331 005	6	Flat washer M8
33	131 041 041	1	
34	100 316 004	3	
35	100 505 060	1	
35	699 114 024	1	
37	131 041 076	1	Bolt clamp OK200
38	122 050 110	1	
39	131 041 073	1	
40	100 315 013	3	
41	100 306 029	3	
42	131 041 065	3	Set screw M10 x 30 mm
43	100 306 030	3	
44	100 304 030	3	
45	131 041 060	3	
46	100 315 013	3	
47	131 040 061	3	Fig. 40 - 47
Cpl:	131 041 006	1	

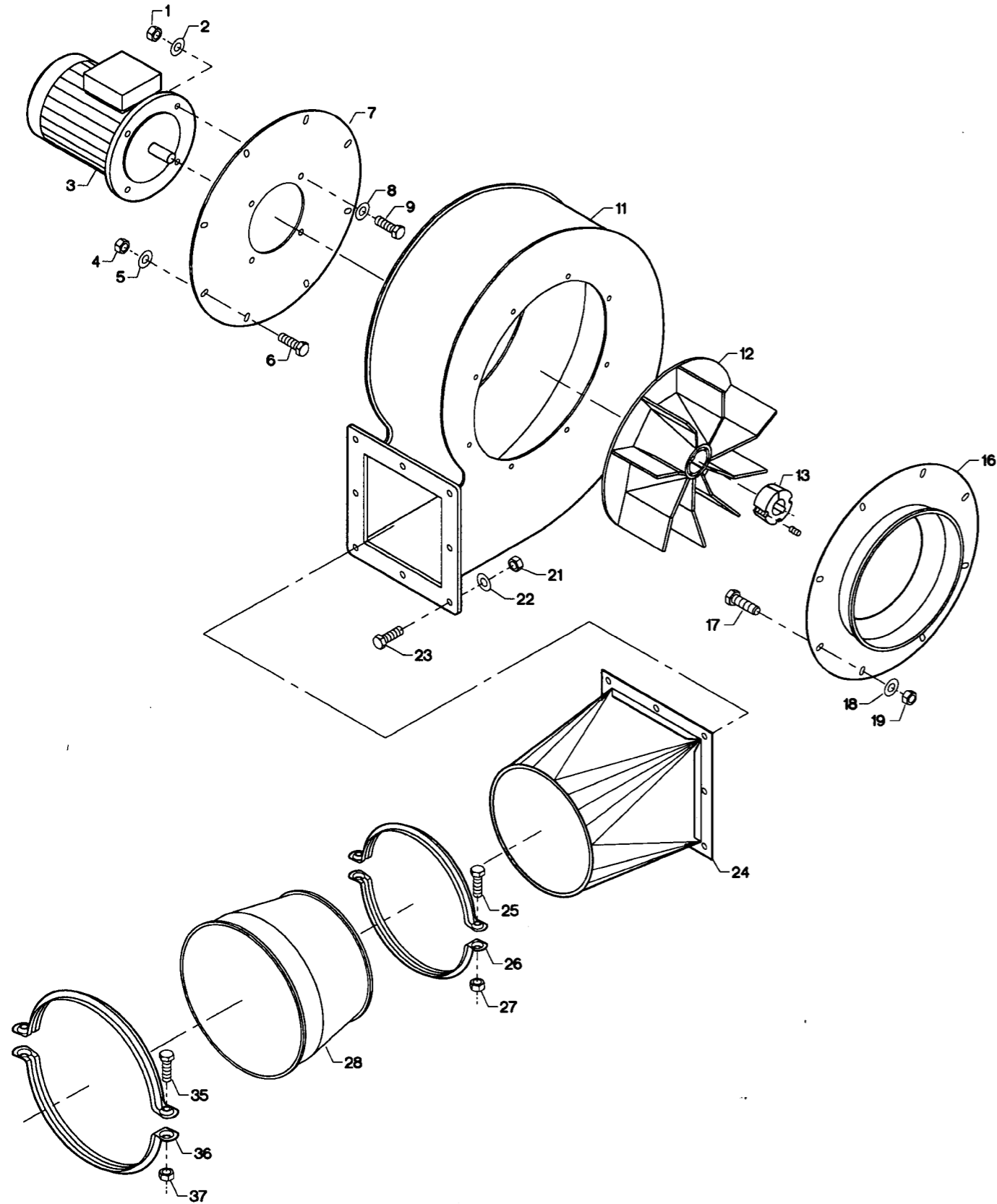
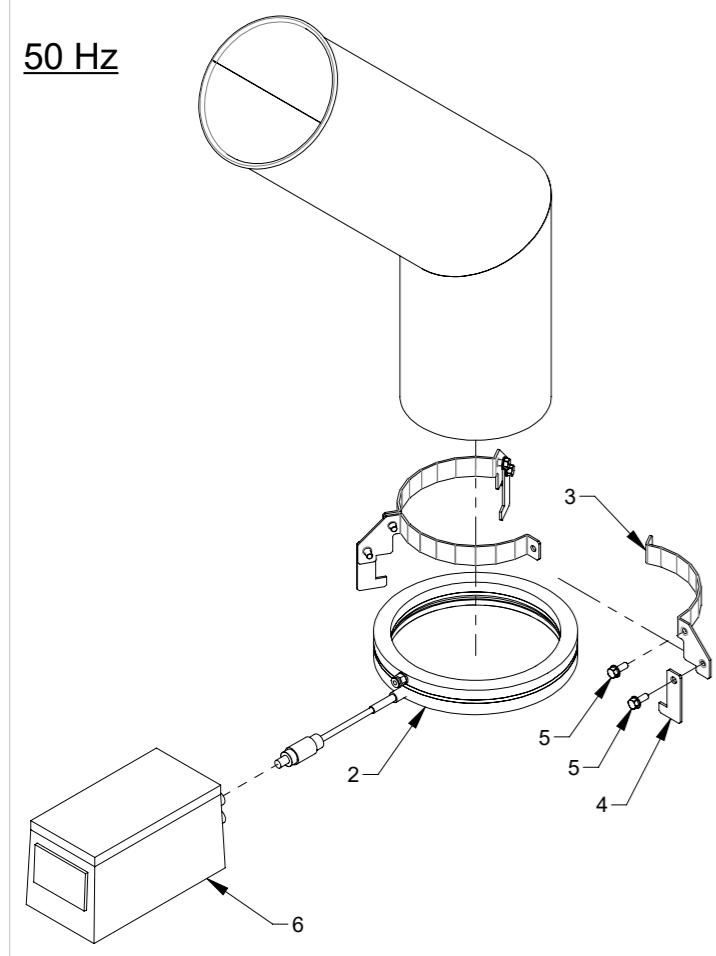


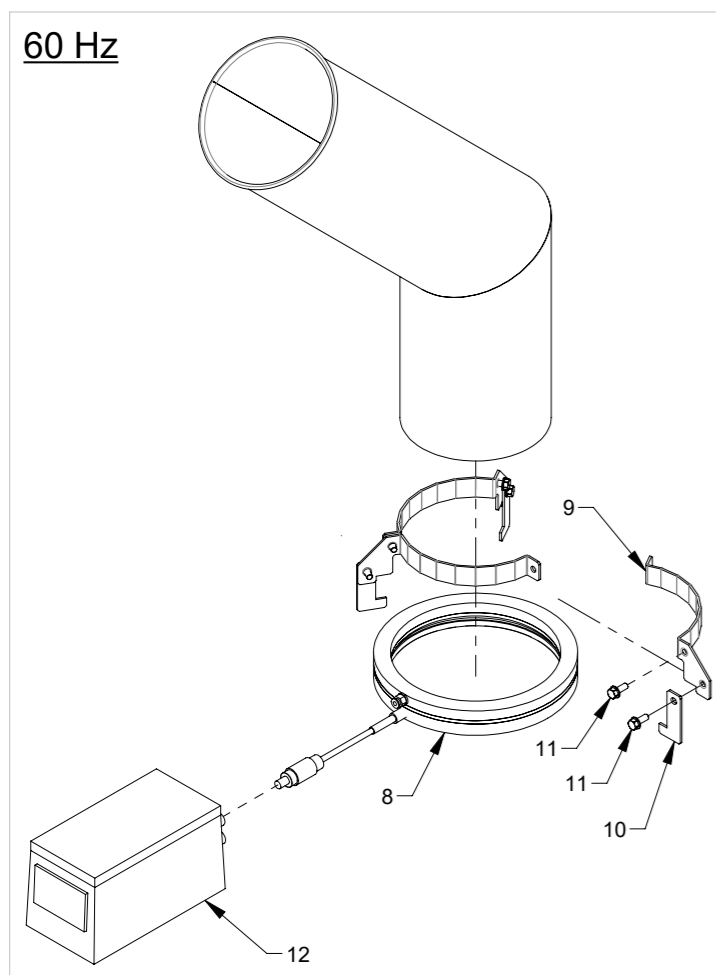
Fig.	Part no.	Pieces	Notes
1	100 316 005	4	Lock nut M12
2	100 331 007	4	Flat washer M12
3	100 501 092	1	AC-Motor 132S-2p B5 7,5(7,5)kW 3x400/690(460)V 50(60)Hz IE3 UL/CSA
	100 501 147	1	K21R 132 SX2 7.5 kW B5 200 V-50 Hz/220 V-60 Hz
	100 551 066	1	215TC-10 HP-460 V-60 Hz-3500 rpm-VM3711T
4	100 551 040	1	215TC-10 HP-575 V-60 Hz-3500 rpm-CEM3771TS
5	100 316 003	8	Lock nut M8
6	100 331 005	8	Flat washer M8
7	100 306 015	8	Set screw M8 x 20 mm
	131 041 022	1	For motor K21R
8	131 041 039	1	For motor 215TC
9	100 331 043	1	Washer 1/2"
	100 304 033	4	Set screw M12 x 35 mm
	100 323 357	4	Set screw UNC 1/2" x 1"
11	12500063121201	1	
12	12500063121508	1	Bore ø38 (50 Hz)
	92563121556	1	Bore ø1 3/8" (60 Hz)
13	125 200 206	1	Bore ø38 (60 Hz)
	12508182161038	1	TB 1610 ø38
	125 100 141	1	TB 1610 ø1 3/8
16	131 041 024	1	
17	100 306 015	8	Set screw M8 x 20 mm
18	100 331 005	8	Flat washer M8
19	100 316 003	8	Lock nut M8
21	100 316 004	8	Lock nut M10
22	100 331 006	8	Flat washer M10
23	100 306 030	8	Set screw M10 x 30 mm
24	125 100 153	1	
25		1	M8 x 35 mm
27		1	M8
Cpl. 28	125 500 328	1	Bolt clamp ø250 Incl. fig. 25 - 27
35	125 500 639	1	
37		1	M8 x 35 mm
Cpl.	125 500 329	1	Bolt clamp 300 Incl. fig. 35 - 37



50 Hz



60 Hz



Pos.	Pcs.	Part no.	Description
1	1	131041144	KIA 60 antistatic equipment 1x230V 50Hz CE
2	1	100503421	Ionisator ring set Haug Ø230/Ø270
3	3	131041146	Bracket for antistatic ring and inlet pipe KIA 60
4	3	131041147	Bracket for ring
5	6	100323454	Thread forming flange screw M8x20 DIN 7500D
6	1	100503422	Power supply for ionisator ring 230V / 50Hz
7	1	131041145	KIA 60 antistatic equipment 1x115V 60Hz UL/CSA
8	1	100503421	Ionisator ring set Haug Ø230/Ø270
9	3	131041146	Bracket for antistatic ring and inlet pipe KIA 60
10	3	131041147	Bracket for ring
11	6	100323454	Thread forming flange screw M8x20 DIN 7500D
12	1	100503423	Power supply for ionisator ring 115V / 60Hz UL/CSA



**Kongskilde Industries A/S**  
Skælskørvej 64  
DK - 4180 Sorø  
Tel. +45 72 17 60 00  
[mail@kongskilde-industries.com](mailto:mail@kongskilde-industries.com)  
[www.kongskilde-industries.com](http://www.kongskilde-industries.com)

