

MultiAir® FCE 3500

Data sheet

The MultiAir® 3500 blower is an integral component of the Kongskilde pneumatic conveying equipment used in the plastic, packaging, and printing industries.

The MultiAir® 3500 is a high-efficiency blower engineered for pneumatic conveying in the plastic, packaging, and printing industries. Equipped with an external control panel with built-in frequency converter (FCE), it allows for easy speed adjustment to match system requirements. As a key component of the Kongskilde conveying equipment, it ensures reliable performance, low noise levels, and minimal maintenance - making it ideal for continuous operation in demanding environments.

Setting a new standard for intelligent conveying, the MultiAir 3500 combines energy-efficient operation with advanced automation, flexible configurations, and seamless integration with production systems. It is a future-ready solution for industries looking to reduce energy costs while maximizing reliability and control.

Features

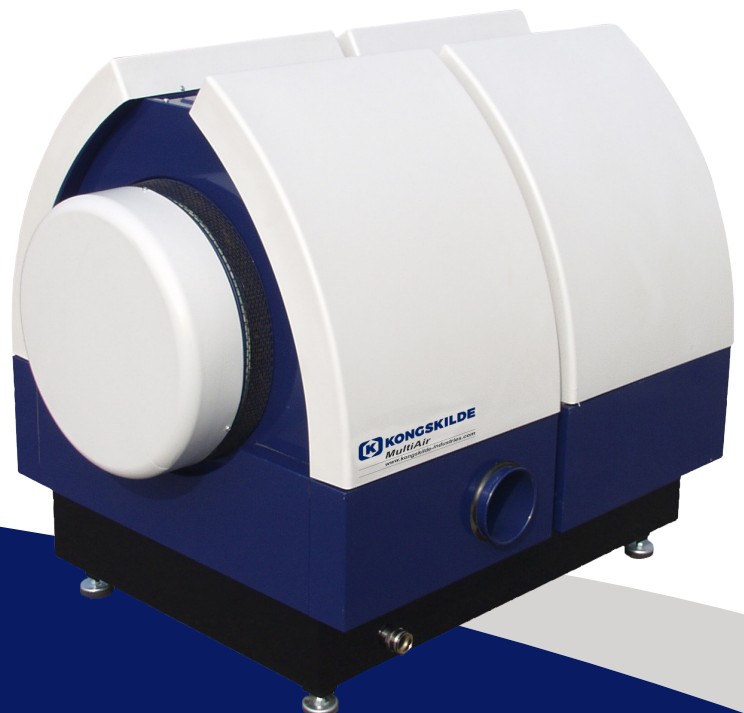
- **Smart, Energy-Efficient Performance** - The MultiAir 3500 intelligently adjusts airflow and power consumption based on real-time demand. It delivers only what is needed and reduces energy waste compared to traditional blowers that run at full capacity.
- **Integrated Inverter and Equipment Compatibility** - The MultiAir 3500 includes an inverter capable of operating at up to 87 Hz, providing precise speed control with a maximum rotor speed of approx. 4800 rpm.
- **Flexible Performance Adjustment** - The MultiAir 3500 can easily be adjusted to match the exact requirements of the main machinery just by using the operator's panel and thus minimizing the power consumption.

Benefits

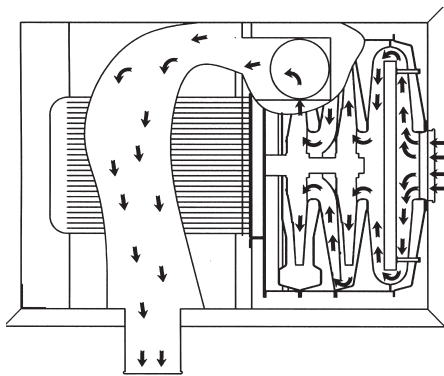
- **High Efficiency & Reliability** - Optimized for continuous operation with low energy consumption.
- **Low Noise** - Built-in insulation and advanced outlet design keep noise levels around 70 dBA.
- **Flexible Electrical Setup** - Equipped with either IEC or UL-certified components.
- **Powerful Performance** - Dual rotor system provides airflow up to 5000 m³/h with a pressure up to 34 kPa.
- **Variable Speed Control** - Integrated inverter adjusts the performance based on system demand, reducing power consumption.
- **Power Consumption** - Up to 37 kW, dynamically adjusting based on operational requirements.

Available in Two Versions

- **S-Version** - Can work as a vacuum blower or a combined vacuum and pressure blower.
- **T-Version** - Operates as a pressure blower only.

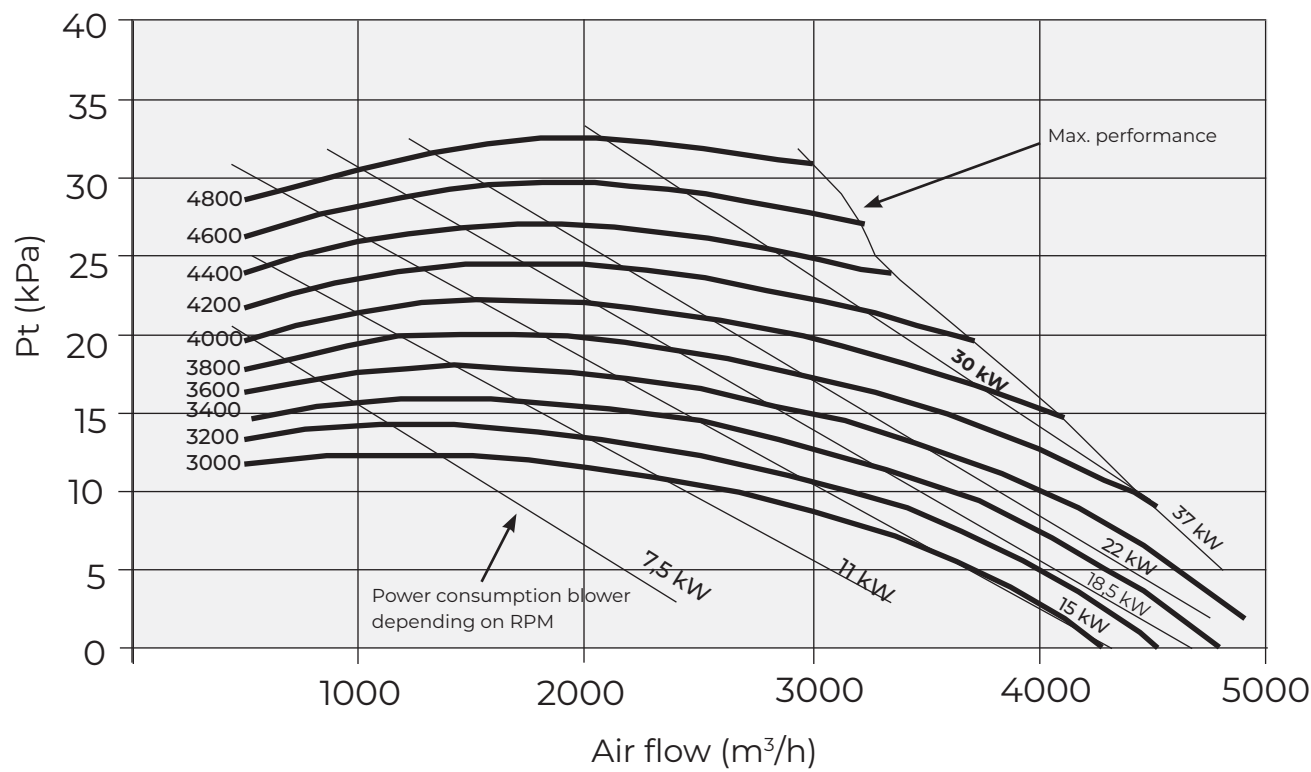


Technical Data



MultiAir® FCE 3500	Technical Specifications
Rated blower power (kW)	37
Power supply	380-480V, 50/60 Hz
Fuse rating (Ampere)	80 (100 for UL/CSA)
Weight (kg) - S model	660
Weight (kg) - T model	675
Rotor rpm at full performance	4.800
Max. heating of air at 1.800 m³/h i °C	45
Ambient temperature - blower	-30°C to 50°C
Ambient temperature - control box	-10°C to 50°C
Approvals	CE or UL/CSA
Sound pressure level Lp (1 meter)	≈ 70 dB (A) (application dependent)*

Capacity



Automatic Control of Blower Performance

To match system requirements and to minimize power consumption the MultiAir 3500 is available with two additional control systems:

- **Pressure Control System** - Automatically regulated blower output based on system pressure. By installing the pressure control the blower will automatically adjust to the required performance and thereby minimize the power consumption and reduce extraction of conditioned air.
- **Air Flow Control System** - Adjusts airflow in response to real-time demand. Air flow control is used in systems where a constant air flow is required, e.g. in pneumatic conveying systems.

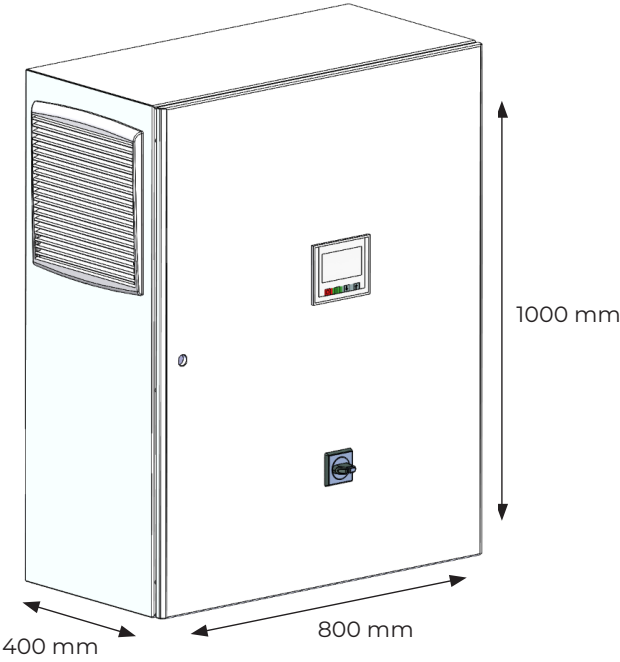
External Motor Control

The operator's panel in the MultiAir can control start/stop of up to two external motors. The below list of optional external motor controls are available.

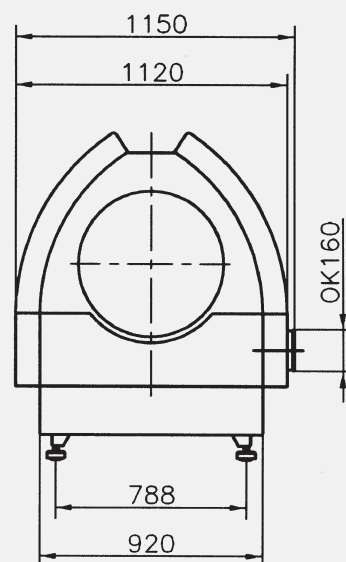
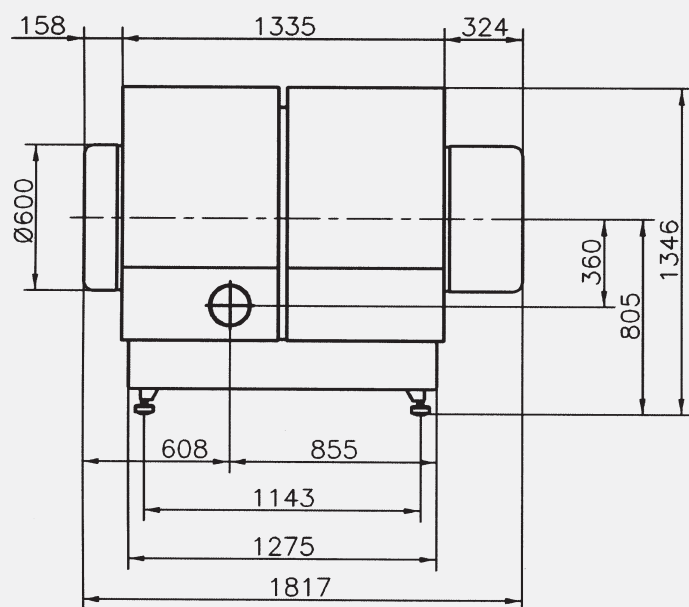
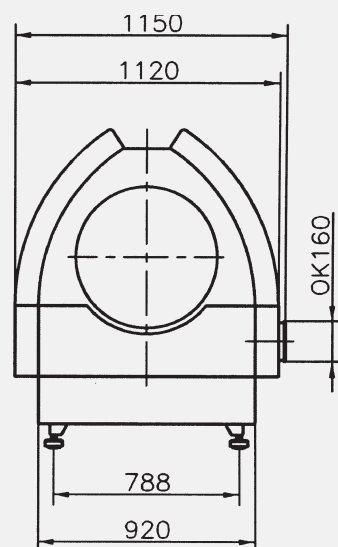
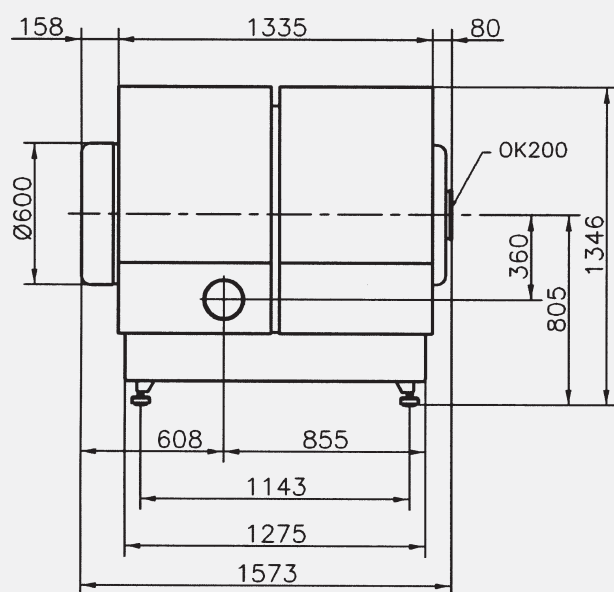
MultiAir® 3500 Motor Controls	Adapts to motor 3 x 400 V, 50 Hz
External motor control (at 400V) 1,3-1,7A	0,55 kW
External motor control (at 400V) 1,7-2,3A	0.75 kW
External motor control (at 400V) 2,3-3,1A	1.1 kW
External motor control (at 400V) 3,1-4,2A	1.5 kW
External motor control (at 400V) 4,2-5,7A	2.2 kW
External motor control (at 400V) 5,7-7,6A	3.0 kW
External motor control (at 400V) 7,6-10A	4.0 kW

Controls meet the demand of IEC/EN and UL/CSA approvals.

MultiAir® FCE 3500 Control Panel with Integrated Inverter



Dimensions



123001613 EXP/CB/MultiAir 3500/DATA/0525

Subject to change without notice.

Kongsilde Industries A/S

Tel. +45 72 17 60 50

industry@kongskilde-industries.com

industry@kongskilde-industries.
www.kongskilde-industries.com

