

Inline Venturi

Data sheet

The Kongskilde Inline Venturi system in conjunction with the Kongskilde Multiair blower unit is efficient for conveying of various materials such as continuous edge trim from paper and film manufacturing and processing industries.

Expanded polystyrene (E.P.S.), guillotine off cuts, roll ends, finished plastic products i.e. blow-moulded bottles, injection moulded products and blow/injection mould waste (Top, tails and sprues). In addition the system can be utilised for explosive fume/vapour ventilation by removing the air return unit and replacing the air return with a large diameter duct.

Unlike conventional Venturi systems, the new Kongskilde Inline Venturi system offers improved suction allowing materials to enter directly into the piping.

The Air Return unit returns the induction air back to the blower, thus permitting only the induced air and the products being conveyed, to pass freely through the Venturi.

The Kongskilde Inline Venturi system in operation has no moving parts, therefore, low maintenance.

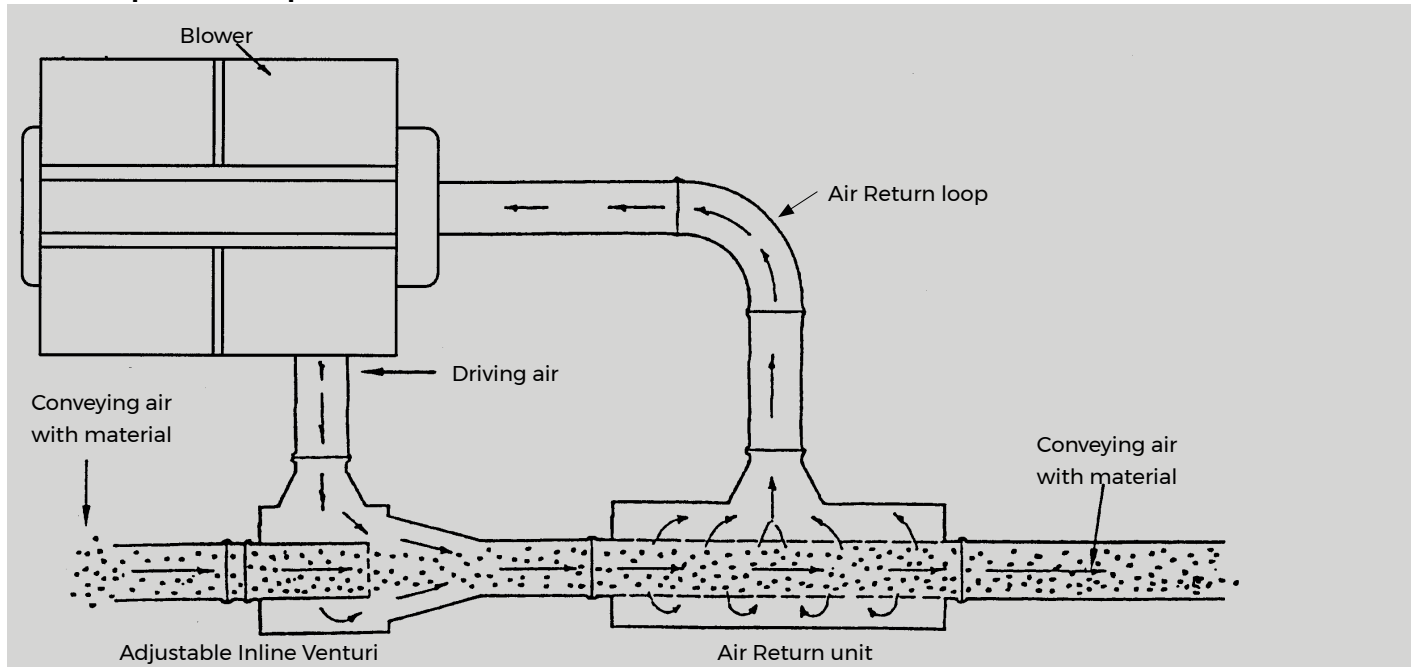
The Kongskilde Venturi system is especially suitable for materials with low density, "odd shapes" or continuous lengths.

The Kongskilde Inline Venturi system simply connects to all Kongskilde blowers and piping with the use of Kongskilde clamps. The Venturi system is available for adaption to OK100, OK160, OK200, \varnothing 250 mm and \varnothing 300 mm piping.

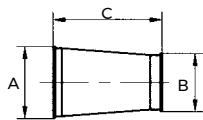
An OK160 Air Return is also used with the OK100 Venturi.



Principle of operation

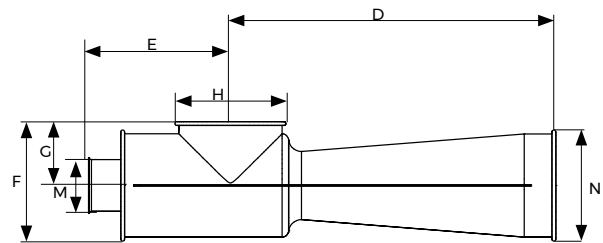


Dimensions

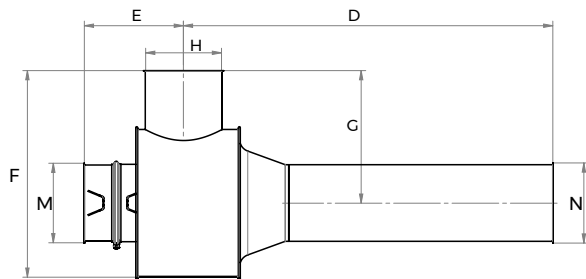


Long Taper

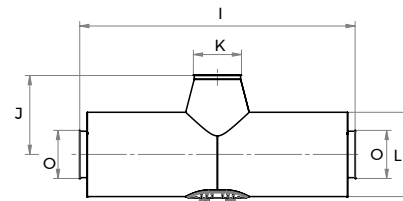
A mm	B mm	C mm
160	100	455
200	160	320
250	200	380
300	250	432
350	300	483



ITF 80/100



ITF 160-300



KIV 100-300

Venturi system	D inches	E inches	F inches	G inches	H mm	I inches	J inches	K mm	L inches	M mm	N mm	O mm
ITF 80	20	8.5	7	3.9	OK160	-	-	-	-	FK80	OK160	-
ITF/KIV 100	20	8.5	7	3.9	OK160	39.4	9.6	OK200	13.8	OK100	OK160	OK160
ITF/KIV 160	43	-5*	20	11	OK200	39.4	9.6	OK200	13.8	OK160	OK160	OK160
ITF/KIV 200	52	-5*	20	11	OK200	39.4	12.8	OK200	15.7	OK200	OK200	OK200
ITF/KIV 250	54	-5*	23.4	13.5	FK250	51	18	FK250	18	FK250	FK250	FK250
ITF/KIV 300	75	-5*	33	19	FK300	70	21.6	FK300	24	FK300	FK300	FK300

* Dimension depends on Venturi adjustment. Kongskilde recommends that a telescopic pipe is installed in the straight section before the Venturi.

Kongskilde Industries USA Inc.

1802 Industrial Park Drive, Unit A
Normal, IL 61761

Tel.: (309) 452-3300

kna@kongskilde-industries.com

www.kongskilde-industries.com

