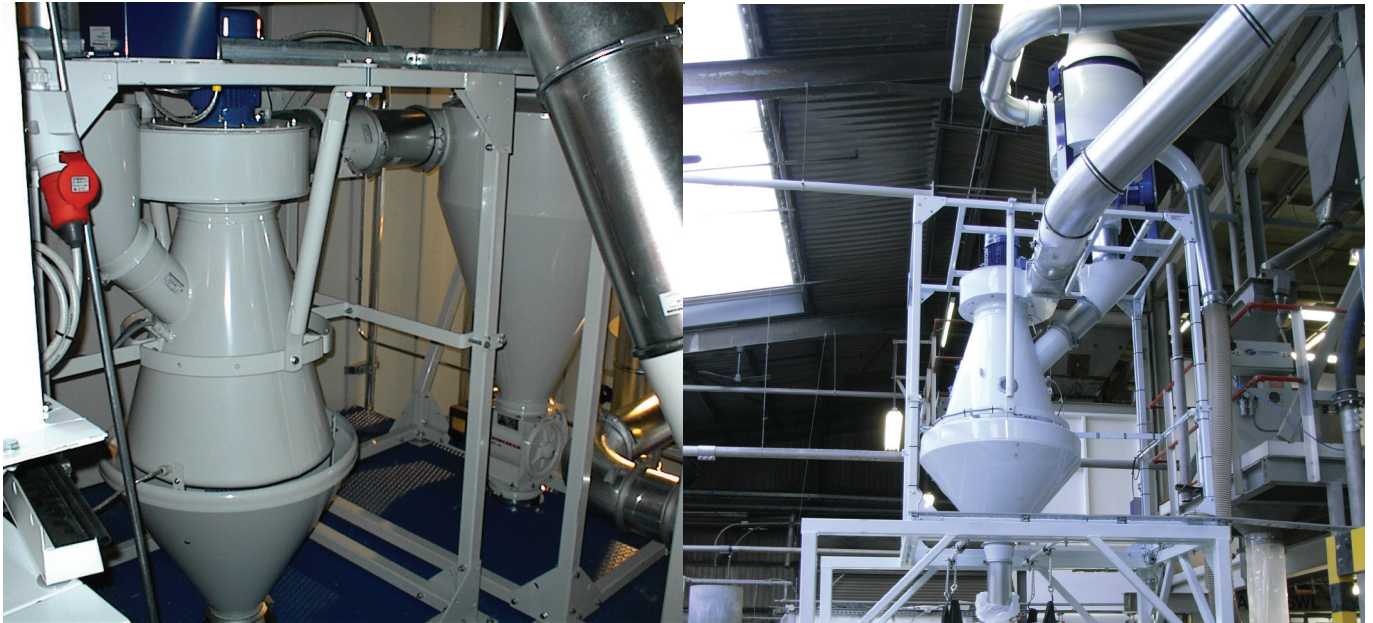




Dedusting and Separation

Kongsilde dedusting and separation systems for plastic granulates, virgin material, and regrind

KIA Aspirator Systems

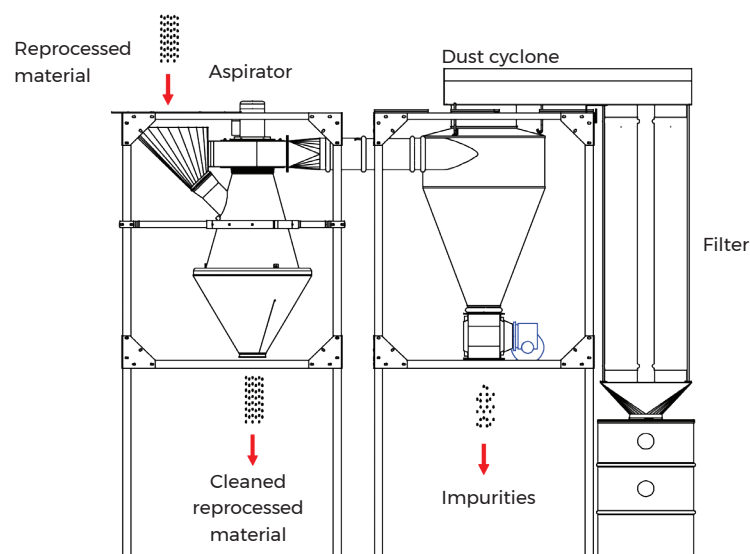


With today's environmental challenges and the elevated price of plastic raw material, it is essential to recycle as much plastic as possible.

The Kongskilde Industrial Aspirator (KIA) uses an innovative way of separating light impurities or dust from granulated plastic og reprocessed material. The reprocessed material enters the KIA via a gravity feed pipe into the main body where the material enters an upward air stream. The light impurities are removed and evacuated to the dust cyclone and filter socks using the fan which is mounted on top of the KIA. The reprocessed material then falls through the bottom outlet of the aspirator.

The KIA has become a benchmark in PET bottle reprocessing with many companies worldwide using it as their preferred method of removing label fragments after initial size reduction. This cost-effective and low maintenance system offers payback in a relatively short period of time.

The KIA range of products has a capacity to handle throughputs of 300 - 2,250 kg/h depending on the type of reprocessed material. The KIA is able to clean both shredded and granulated plastic. It is suited in both in-house recycling or at a materials recycling facility.



KIA Aspirator System

AirWash Systems



Kongsilde's patented AirWash is the only plastics dedusting system in today's market place that can convey and clean simultaneously. With its two-stage cleaning process it is a precise deduster that can eliminate pelletisation and drastically reduce processing costs.

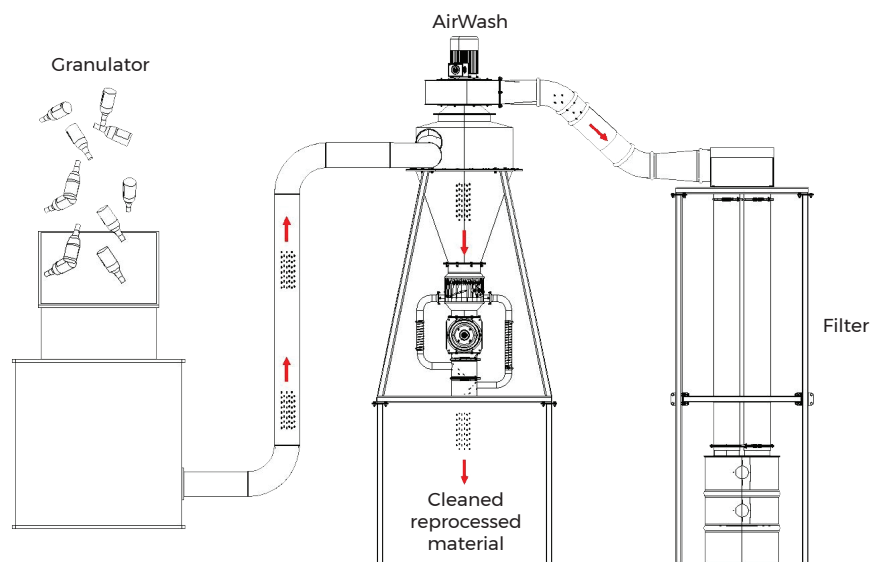
The AirWash is designed to effectively evacuate material from granulators, mixers, and other process equipment using its own blower which is also used for the cleaning process.

The AirWash range of products has a capacity to handle throughputs of 225 - 1,300 kg/h depending on the type of reprocessed material.

Suitable regrind materials for the AirWash are:

- PP
- PET
- PE
- HDPE
- Nylon
- ABS
- Carpet fibres
- Rubber

Due to the precise control function of the system, it is ideally suited for in-house recycling where it can perform uniform cleaning of the granulated material.



AirWash System

Pipe System



Kongskilde's range of pipework has diameters of 80 mm to 800 mm in light and heavy duty versions. All pipes are available in galvanised or stainless steel with an optional non-stick internal surface treatment for conveying label waste and other materials where adhesives are present.

Designed in a modular form, the pipework systems comprise pipes, bends, branches, diverters, cyclones, silencers, outlets, etc. All components are connected either using quick release clamps (rapid pull) or bolt clamps that provide excellent sealed joints which reduce pressure losses in conveying systems.

Kongskilde Industries A/S

Tel.: +45 72 17 60 50

industry@kongskilde-industries.com

www.kongskilde-industries.com