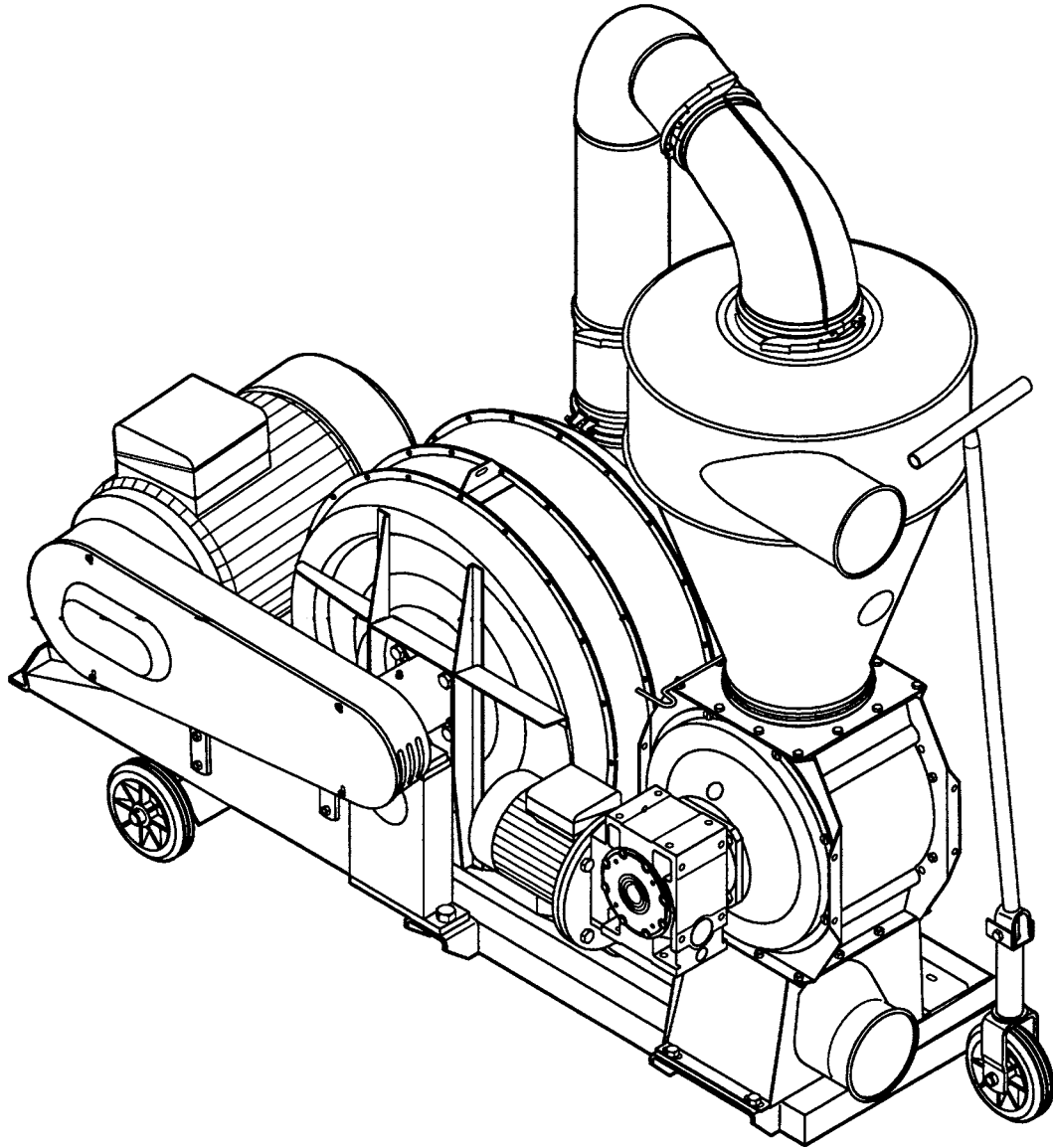


SUC 300/500E - Industry

Suction Blowers



Spare parts list

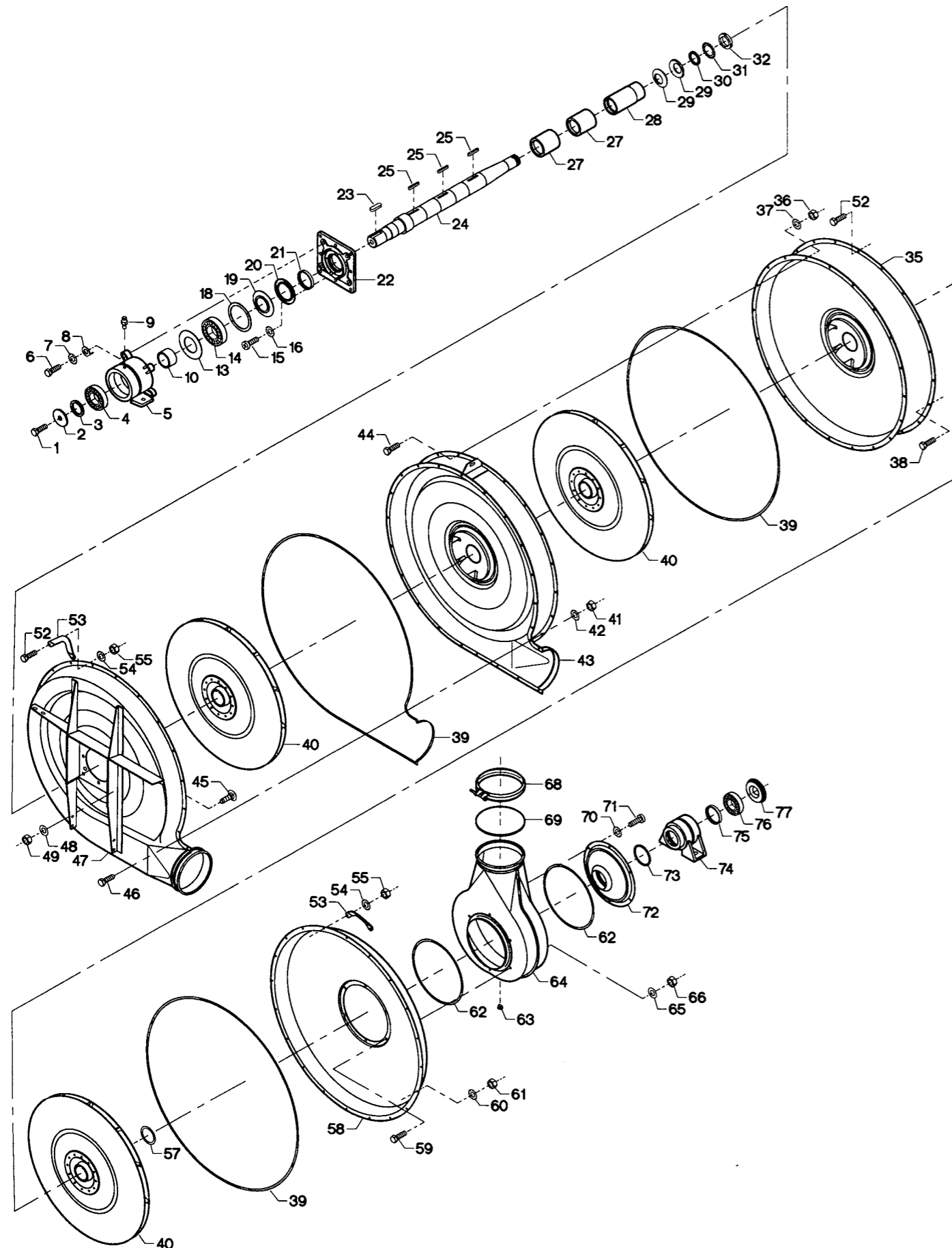


Fig.	Part no.	Pieces	Notes
1	100 304 044	1	Set screw M16 x 30 mm
2	121 121 079	1	
3	121 130 228	1	
4	100 401 043	1	Ball bearing # 6309 Z C3
5	121 130 250	1	
6	100 304 033	4	Set screw M12 x 35 mm
7	100 332 005	4	Star washer M12
8	121 140 024	4	
9	100 421 000	1	Grease nipple M6
10	121 130 241	1	
13	100 323 344	1	99 x 109 x 0.6 mm
14	100 401 042	1	Ball bearing # 6310 Z C3
15	100 321 010	4	Crosshead screw M5 x 12 mm
16	100 332 001	4	Star washer M5
18	100 323 343	1	Spacer ZW 90 x 110 mm
19	121 140 019	1	
20	121 140 017	1	
21	121 150 243	1	
22	121 140 176	1	
23	100 405 005	1	Key 14 x 9 x 40 mm
24	121 130 223	1	Complete incl. items 1 - 24
Cpl.	121 130 251	1	
25	100 405 013	3	Key 8 x 7 x 50 mm
27	121 150 237	2	
28	121 150 238	1	
29	100 323 144	2	Disc washer 70 x 40.5 x 4 mm
30	121 130 226	1	
31	100 407 025	1	Star washer MB 8
32	100 323 064	1	Ring nut KM 8
35	121 130 253	1	
36	100 315 028	20	Nut M6
37	100 332 002	20	Star washer M6
38	100 323 041	18	Set screw M6 x 16 mm
39	121 100 303	-	Sealing strip. Indicate length 8.3 m when ordering
40	121 150 166	3	
41	100 315 028	21	Nut M6
42	100 332 002	21	Star washer M6
43	121 120 385	1	
44	100 323 041	20	Set screw M6 x 16 mm
45	100 311 017	8	Coach bolt M8 x 25 mm
46	100 323 041	21	Set screw M6 x 16 mm
47	121 120 384	1	
48	100 331 005	8	Flat washer M8
49	100 316 003	8	Lock nut M8
52	100 306 001	4	Set screw M6 x 20 mm
53	121 150 257	2	Star washer M6
54	100 332 002	4	Nut M6
55	100 315 028	4	Nut M6
57	121 150 182	8	Flat washer
58	121 120 386	1	
59	100 306 001	6	Set screw M6 x 20 mm
60	100 332 002	18	Star washer M6
61	100 315 028	18	Nut M6
62	100 203 030	-	Sealing strip 2 x 6 mm. Indicate length 1.6 m when ordering
63	121 130 131	1	
64	121 130 255	1	
65	100 331 004	6	Flat washer M6
66	100 316 002	6	Lock nut M6
68	122 000 193	1	Clamp with screw OK160
69	110 101 105	1	
70	100 332 002	6	Star washer M6
71	100 308 018	6	Set screw M6 x 12 mm
72	121 130 257	1	
73	100 413 066	1	O-ring 84.2 x 5.7 mm
74	121 134 376	1	
75	121 150 243	1	
76	100 401 072	1	Ball bearing # 6208 - 2RS1/C3HT51
77	121 130 042	1	
Cpl.	121 130 258	1	Complete incl. items 1 - 77

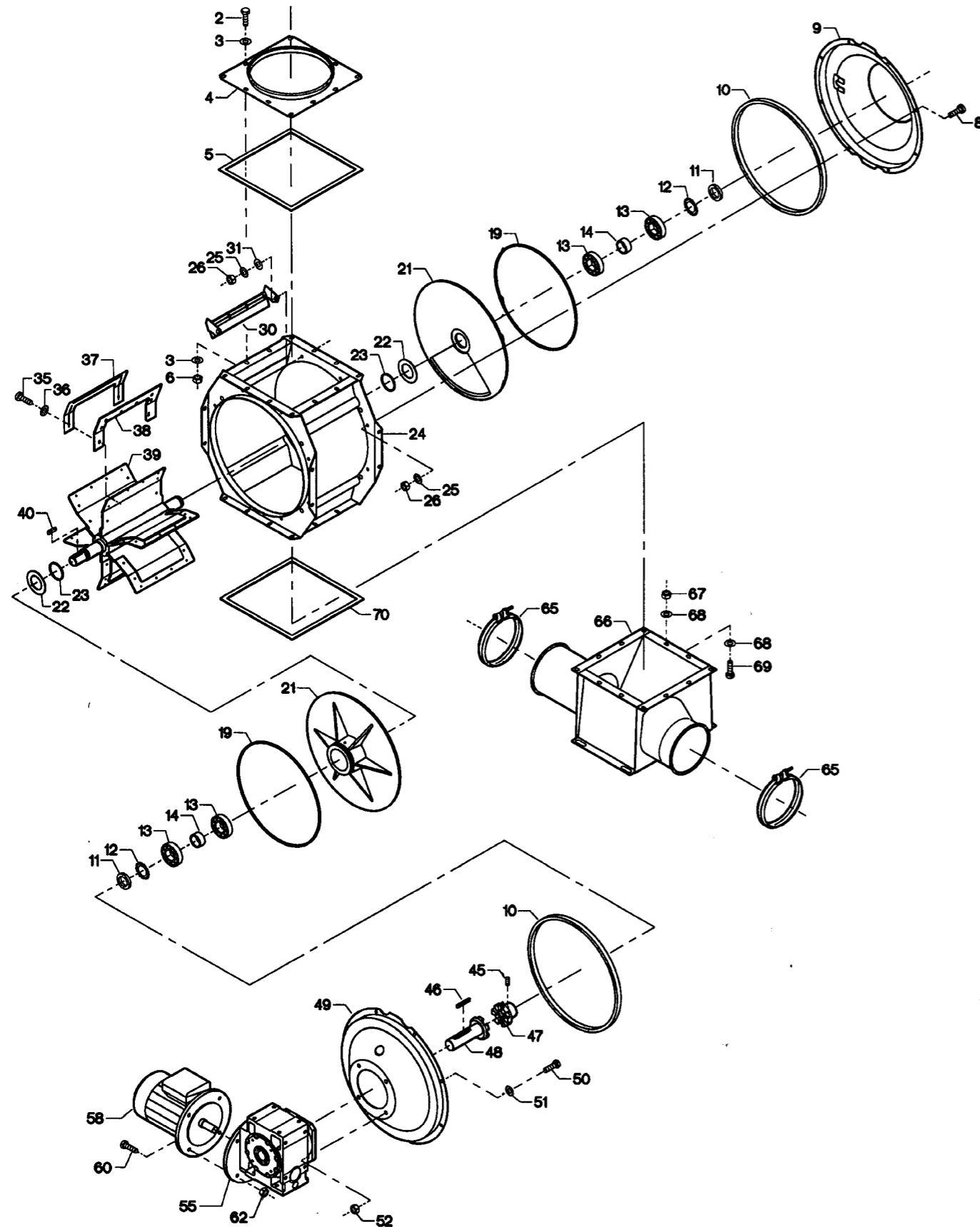


Fig.	Part no.	Pieces	Notes
2	100 306 014	12	Set screw M8 x 15 mm
3	100 331 005	24	Flat washer M8
4	121 108 235	1	
5	100 202 011	-	7 x 8 mm. Order 1.2 m
6	100 315 012	12	Nut M8
8	100 306 015	16	Set screw M8 x 20 mm
9	121 108 230	1	
10	100 202 046	-	10 x 12 mm. Order 2.5 m
11	100 323 315	2	Nut M35 x 1,5 mm KM7
12	100 407 046	2	Lock washer MB7
13	100 401 074	4	Ball bearing 6207 2Z
14	121 108 171	2	
19	100 413 144	2	O-ring ø350 x ø4 mm
21	121 108 166	2	
22	100 402 025	2	FRIMET FA52
23	100 413 148	2	O-ring ø58 x ø3 mm
24	121 108 232	1	
25	100 332 003	16	Star washer M8
26	100 315 012	16	Nut M8
30	121 108 282	1	
31	100 331 005	2	Flat washer M8
35	100 321 010	48	Crosshead screw M5 x 12 mm
36	100 332 001	48	Star washer M5
37	121 108 273	6	
38	121 108 274	6	
39	121 108 271	1	Complete incl. items 35 - 39
Cpl	121 108 269	1	Key 8 x 7 x 35 mm
40	100 405 000	1	
45	100 322 010	1	Stop screw M6 x 8 mm
46	100 405 035	1	Key 10 x 8 x 70 mm
47	121 108 275	1	
48	121 108 277	1	
49	121 108 278	1	
50	100 306 044	4	Set screw M12 x 40 mm
51	100 332 021	4	Star washer M12
Cpl	121 108 268	1	Complete incl. items 2 - 40 + 49 - 51
52	100 316 005	4	Lock nut M12
55	100 505 072	1	Gear SK1SI63F-IEC90/B5 I:40 / B5 (for SUC 300 E, 50 & 60 Hz)
	100 505 073	1	Gear SK1SI63F-IEC90/B5 I:32 / B5 (for SUC 500 E, 60 Hz)
	100 505 078	1	Gear SK1SI63F-IEC90/B5 I:25 / B5 (for SUC 500 E, 50 Hz)
58	100 505 011	1	AC motor 90S-4p B5 1,1kW 3x230/400V 50Hz IE3 (for SUC 300 E)
	100 505 012	1	AC motor 90L-4p B5 1,5kW 3x230/400V 50Hz IE3 (for SUC 500 E)
	100 501 162	1	AC motor 90L-4p B5 1,5kW 3x575V 60Hz IE3 UL/CSA (for SUC 300 E)
	100 551 097	1	AC motor 90L-4p B5 1,5kW 3x575V 60Hz IE3 UL/CSA - MVM 3558D-5 (for SUC 500 E)
	100 551 098	1	AC motor 90L-4p B5 1,5kW 3x460V 60Hz IE3 UL/CSA - MVM 3558D (for SUC 500&300 E)
	100 501 206	1	AC motor 90L-4p B5 2,2kW 3x440V 60Hz IE3 UL/CSA - MVM 3558D (for SUC 500&300 E)
60	100 306 031	4	Bolt M10 x 35 mm (For motor type 90)
	100 306 044	4	Bolt M12 x 40 mm (For motor type 100)
62	100 316 004	4	Lock nut M10 (For motor type 90)
	100 316 005	4	Lock nut M12 (For motor type 100)
65	122 001 078	2	Bolt clamp OK160, for spec. safety joint
66	121 108 243	1	
67	100 315 012	12	Nut M8
68	100 331 005	24	Flat washer M8
69	100 306 014	12	Set screw M8 x 15 mm
70	100 202 011	-	10 x 12 mm. Order 1.2 m
Cpl	121 108 190	1	Complete incl. items 65 - 70

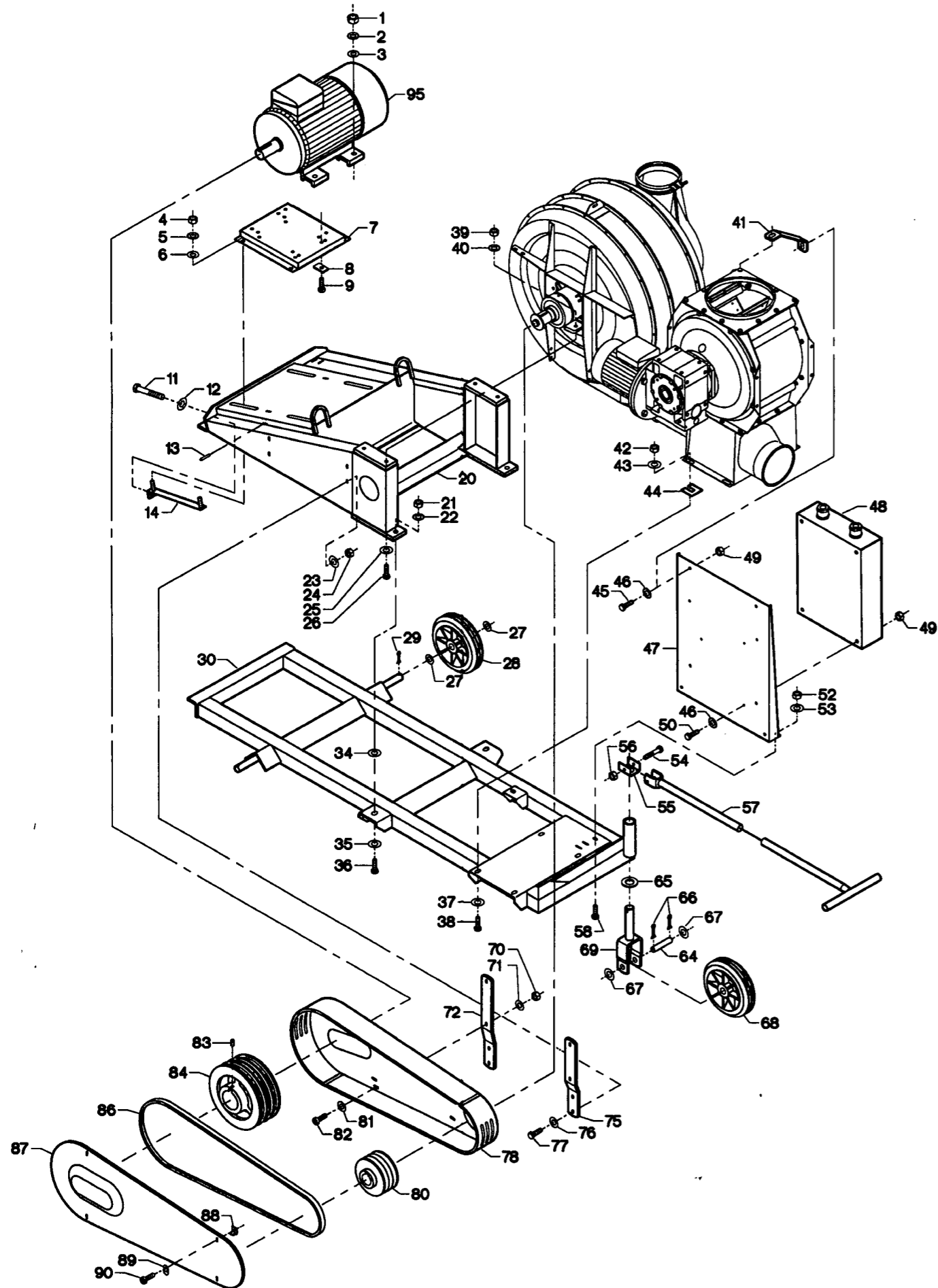


Fig.	Part no.	Pieces	Notes
1	100 315 016	4	Nut M12
2	100 332 005	4	Star washer M12
3	100 331 007	4	Flat washer M12
4	100 315 020	4	Nut M16
5	100 332 006	4	Star washer M16
6	100 331 012	4	Flat washer M16
7	121 132 082	1	
8	113 000 090	4	Flat washer
9	100 306 045	4	Set screw M12 x 45 mm
10	100 511 005	1	
11	121 133 011	2	
12	100 331 012	2	Flat washer M16
13	100 333 018	2	Slotted spring pin $\phi 6 \times 32$ mm
14	121 133 012	2	
20	121 133 098	1	
21	100 315 020	4	Nut M16
22	100 332 006	4	Star washer M16
23	100 331 005	4	Flat washer M8
24	100 315 012	4	Nut M8
25	100 331 007	4	Flat washer M12
26	100 304 033	4	Set screw M12 x 35 mm
27	121 000 333	4	Flat washer $\phi 26 \times 40 \times 2$ mm
28	100 412 005	2	
29	100 333 005	2	Split pin $\phi 6 \times 40$ mm
30	121 132 078	1	
34	100 331 012	3	Flat washer M16
35	100 331 008	3	Flat washer M16
36	100 304 045	3	Set screw M16 x 45 mm
37	100 331 007	4	Flat washer M12
38	100 306 043	4	Set screw M12 x 30 mm
39	100 315 016	4	Nut M12
40	100 332 005	4	Star washer M12
41	121 132 070	1	
42	100 316 005	4	Lock nut M12
43	100 331 007	4	Flat washer M12
44	113 034 034	1	1 mm
	113 034 035	1	2 mm
	113 034 036	1	3 mm
45	100 308 002	1	Set screw M8 x 25 mm
46	100 332 003	4	Star washer M8
47	121 133 105	1	
48	100 503 007	1	Motor protection starter box 3 x 400 V - 50 Hz
49	100 315 012	4	Nut M8
50	100 308 015	4	Set screw M8 x 20 mm
52	100 315 013	2	Nut M10
53	100 332 004	2	Star washer M10
54	100 306 037	1	Bolt M10 x 65
55	121 132 066	1	
56	100 316 004	1	Lock nut M10
57	121 132 067	1	
58	100 308 004	2	Set screw M10 x 20 mm
64	121 000 163	1	
65	100 323 020	1	Flat washer $\phi 33 \times 60 \times 5$ mm
66	100 333 005	2	Split pin $\phi 6 \times 40$ mm
67	121 000 333	2	Flat washer $\phi 26 \times 40 \times 2$
68	100 412 003	1	
69	121 000 746	1	
70	100 315 012	4	Nut M8
71	100 331 005	4	Flat washer M8
72	121 133 107	1	
75	121 133 109	1	
76	100 331 005	4	Flat washer M8
77	100 308 002	4	Set screw M8 x 25 mm
78	121 133 111	1	
80	121 133 034	1	SPB 160/3, bore $\phi 45$ mm
81	100 331 005	4	Flat washer M8
82	100 306 015	4	Set screw M8 x 20 mm
83	100 322 004	1	Stop screw M10 x 10 mm
84	121 132 088	1	SPB 190/3, bore $\phi 48$ mm
	121 132 086	1	SPB 160/3, bore 1 5/8"
86	100 403 246	3	Raw edge moulded notch V-belt SPB 2000
87	121 133 113	1	
88	121 000 402	4	
89	121 000 686	4	
90	100 321 010	4	Crosshead screw M5 x 12 mm
95	100 501 020	1	Motor, 180 M2, 22 kW, B3, 3 x 400 V, 50 Hz-2935 rpm
	100 551 030	1	Motor, 286TS-30 HP-460 V-60 Hz-3525 rpm-M4108T
	100 551 020	1	Motor, 286TS-30 HP-575 V-60 Hz-3525 rpm-M4108T5

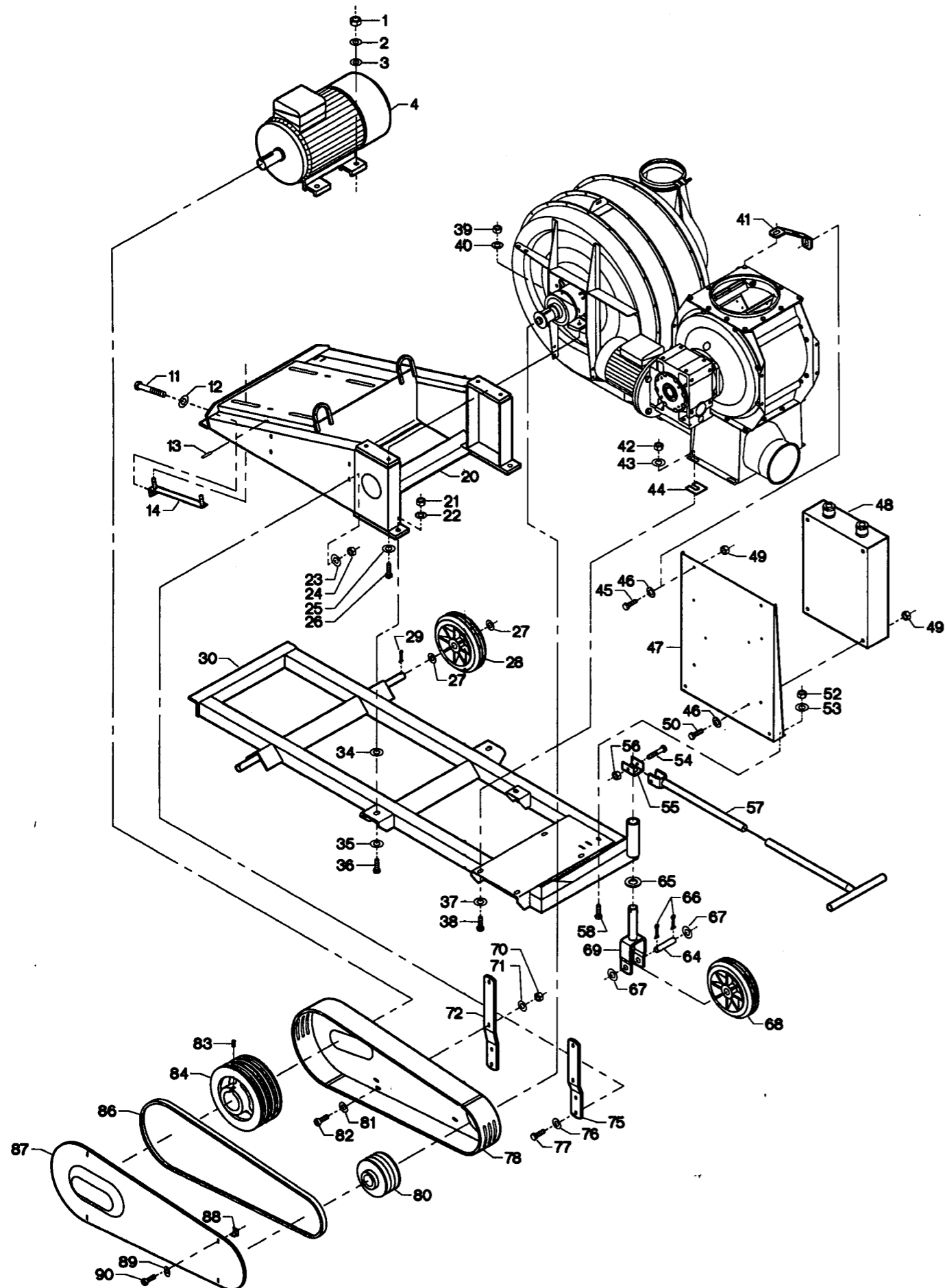


Fig.	Part no.	Pieces	Notes
1	100 315 020	4	Nut M16
2	100 332 006	4	Star washer M16
3	100 331 012	4	Flat washer M16
4	100 551 031	1	AC motor 200L-2p B3 37kW 3x460V 60Hz IE3 UL/CSA - M4114T
	100 551 021	1	AC motor 200L-2p B3 37kW 3x575V 60Hz IE3 UL/CSA - M4114T5
	100 501 254	1	AC Motor 200L-2p B3 37(37)kW 3x400/690(440/460/480)V 50(60)Hz IE3 UL/CSA
10	100 511 005	1	
11	121 133 011	2	
12	100 331 012	2	Flat washer M16
13	100 333 018	2	Slotted spring pin $\varnothing 6 \times 32$ mm
14	121 133 012	2	
20	121 133 098	1	
21	100 315 020	4	Nut M16
22	100 332 006	4	Star washer M16
23	100 331 005	4	Flat washer M8
24	100 315 012	4	Nut M8
25	100 331 007	4	Flat washer M12
26	100 304 033	4	Set screw M12 x 35 mm
27	121 000 333	4	Flat washer $\varnothing 26 \times 40 \times 2$ mm
28	100 412 005	2	
29	100 333 005	2	Split pin $\varnothing 6 \times 40$ mm
30	121 132 078	1	
34	100 331 012	3	Flat washer M16
35	100 331 008	3	Flat washer M16
36	100 304 045	3	Set screw M16 x 45 mm
37	100 331 007	4	Flat washer M12
38	100 306 043	4	Set screw M12 x 30 mm
39	100 315 016	4	Nut M12
40	100 332 005	4	Star washer M12
41	121 132 070	1	
42	100 316 005	4	Lock nut M12
43	100 331 007	4	Flat washer M12
44	113 034 034	1	1 mm
	113 034 035	1	2 mm
	113 034 036	1	3 mm
45	100 308 002	1	Set screw M8 x 25 mm
46	100 332 003	4	Star washer M8
47	121 133 105	1	
48	100 503 135	1	Motor protection starter box 3 x 400 V - 50 Hz
49	100 315 012	4	Nut M8
50	100 308 0015	4	Set screw M8 x 10 mm
52	100 315 013	2	Nut M10
53	100 332 004	2	Star washer M10
54	100 306 037	1	Bolt M10 x 65
55	121 132 066	1	
56	100 316 004	1	Lock nut M10
57	121 132 067	1	
58	100 308 004	2	Set screw M10 x 20 mm
64	121 000 163	1	
65	100 323 020	1	Flat washer $\varnothing 33 \times 60 \times 5$ mm
66	100 333 005	2	Split pin $\varnothing 6 \times 40$ mm
67	121 000 333	2	Flat washer $\varnothing 26 \times 40 \times 2$
68	100 412 003	1	
69	121 000 746	1	
70	100 315 012	4	Nut M8
71	100 331 005	4	Flat washer M8
72	121 133 107	1	
75	121 133 109	1	
76	100 331 005	4	Flat washer M8
77	100 308 002	4	Set screw M8 x 25 mm
78	121 133 111	1	
80	121 133 034	1	SPB 160/3, bore $\varnothing 45$ mm
81	100 331 005	4	Flat washer M8
82	100 306 015	4	Set screw M8 x 20 mm
83	100 322 004	1	Stop screw M10 x 10 mm
84	121 133 039	1	SPB 240/3, bore $\varnothing 55$ mm
86	121 133 078	1	SPB 200/3, bore 1 7/8"
87	100 403 088	3	Raw edge moulded notch V-belt SPB 1900
88	121 133 113	1	
89	121 000 402	4	
	121 000 686	4	
90	100 321 010	4	Crosshead screw M5 x 12 mm

Kongskilde Industries A/S

Skælskørvej 64

DK - 4180 Sorø

Tel. +45 72 17 60 00

mail@kongskilde-industries.com

www.kongskilde-industries.com