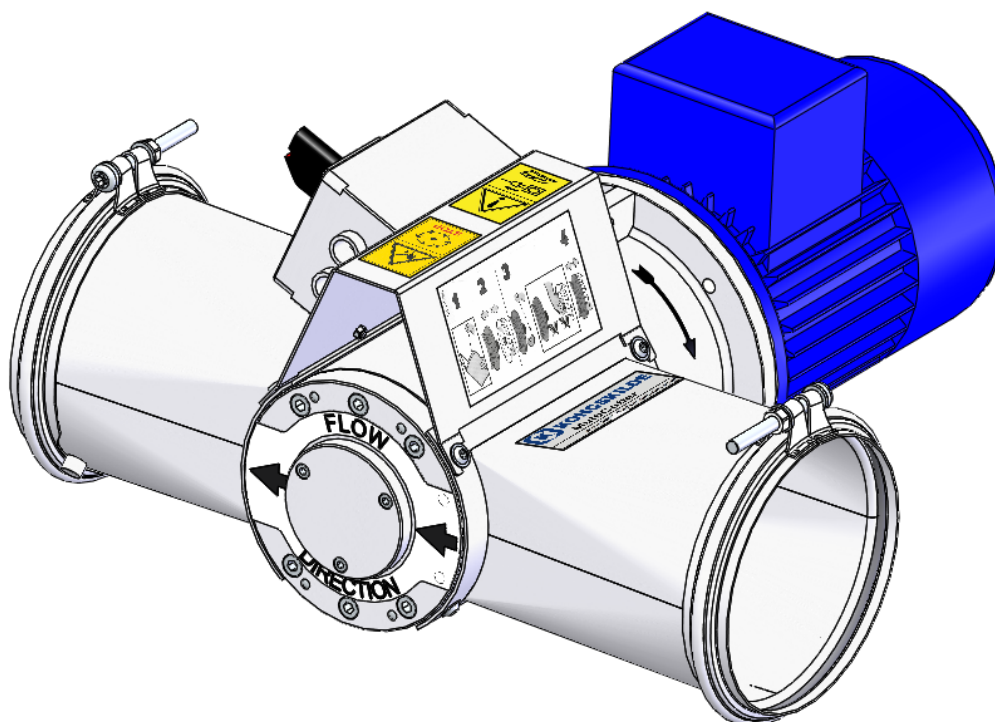
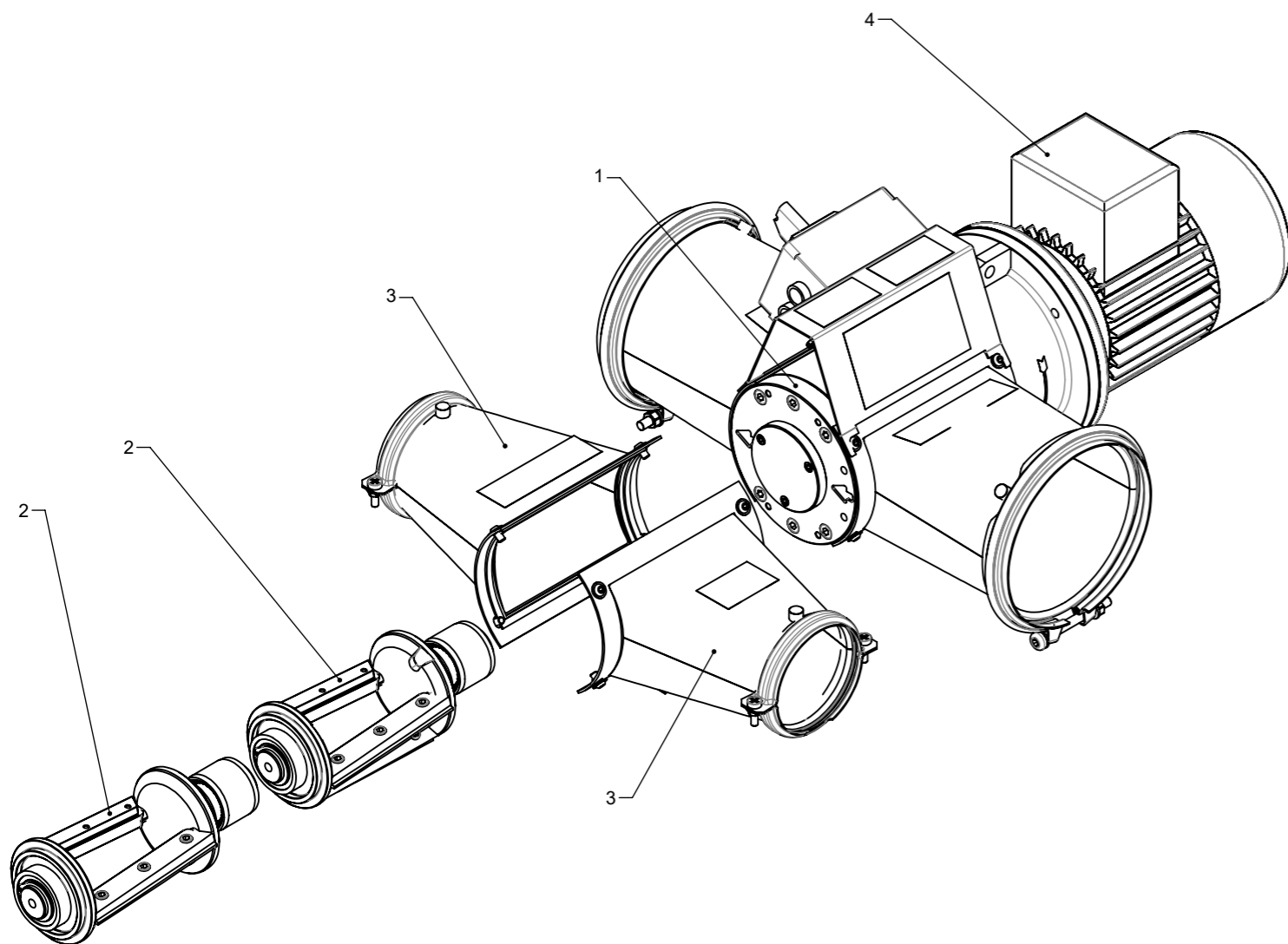


# MultiCutter

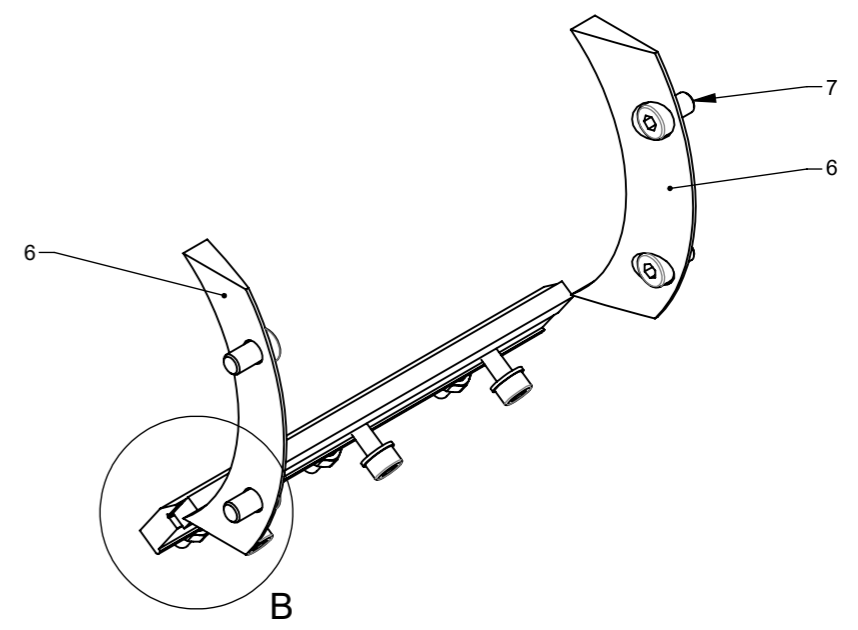
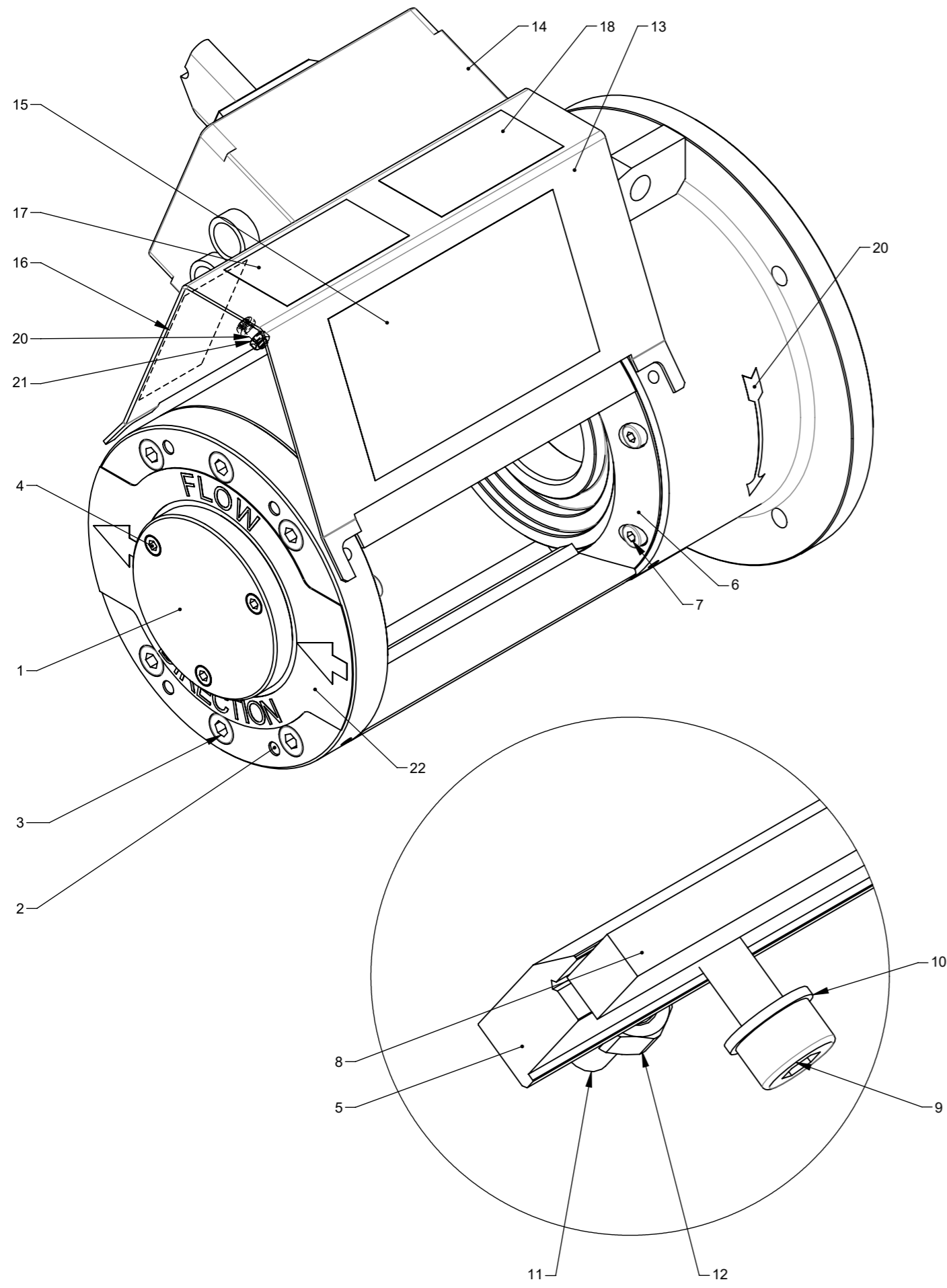
## Cutter



Spare parts list

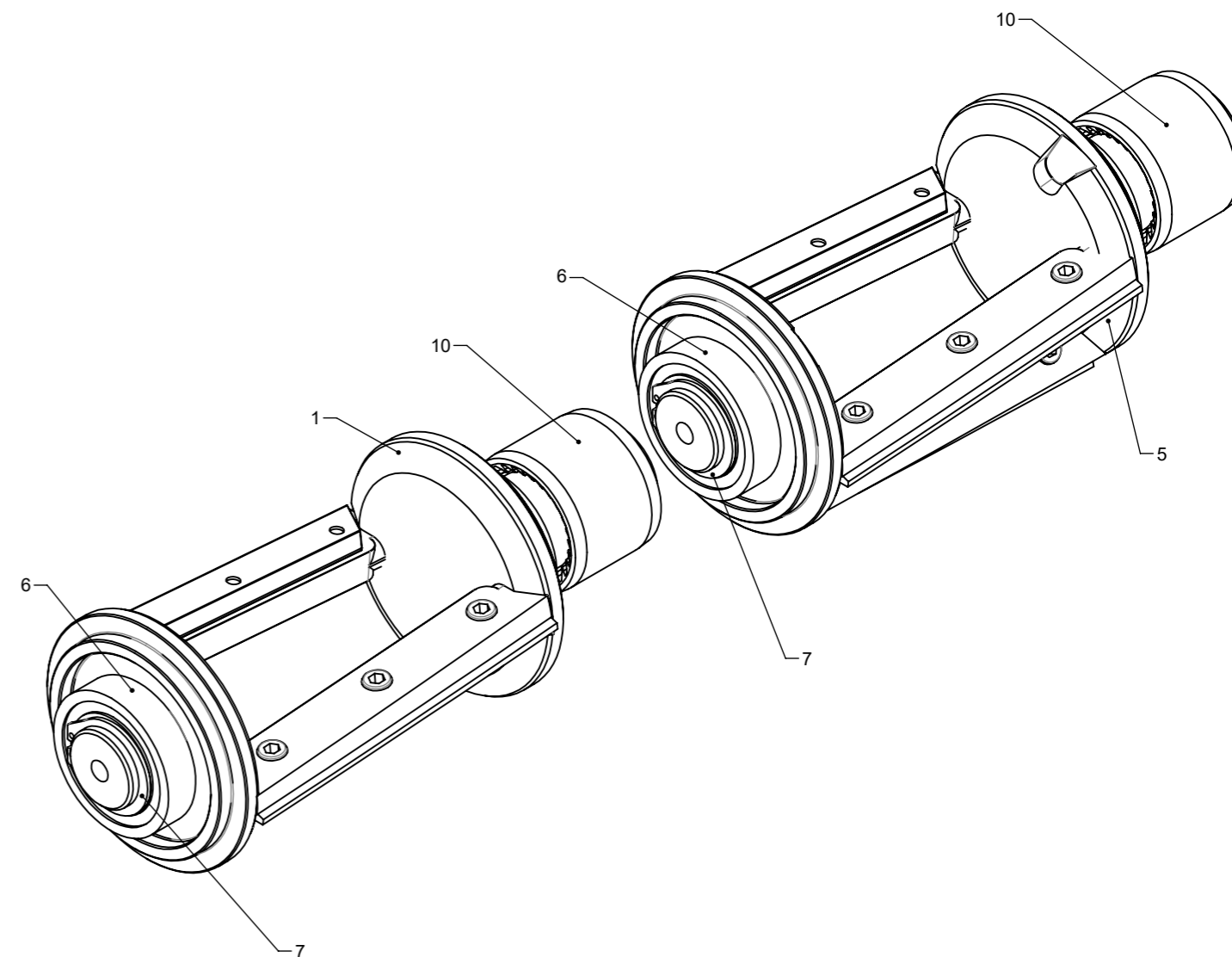
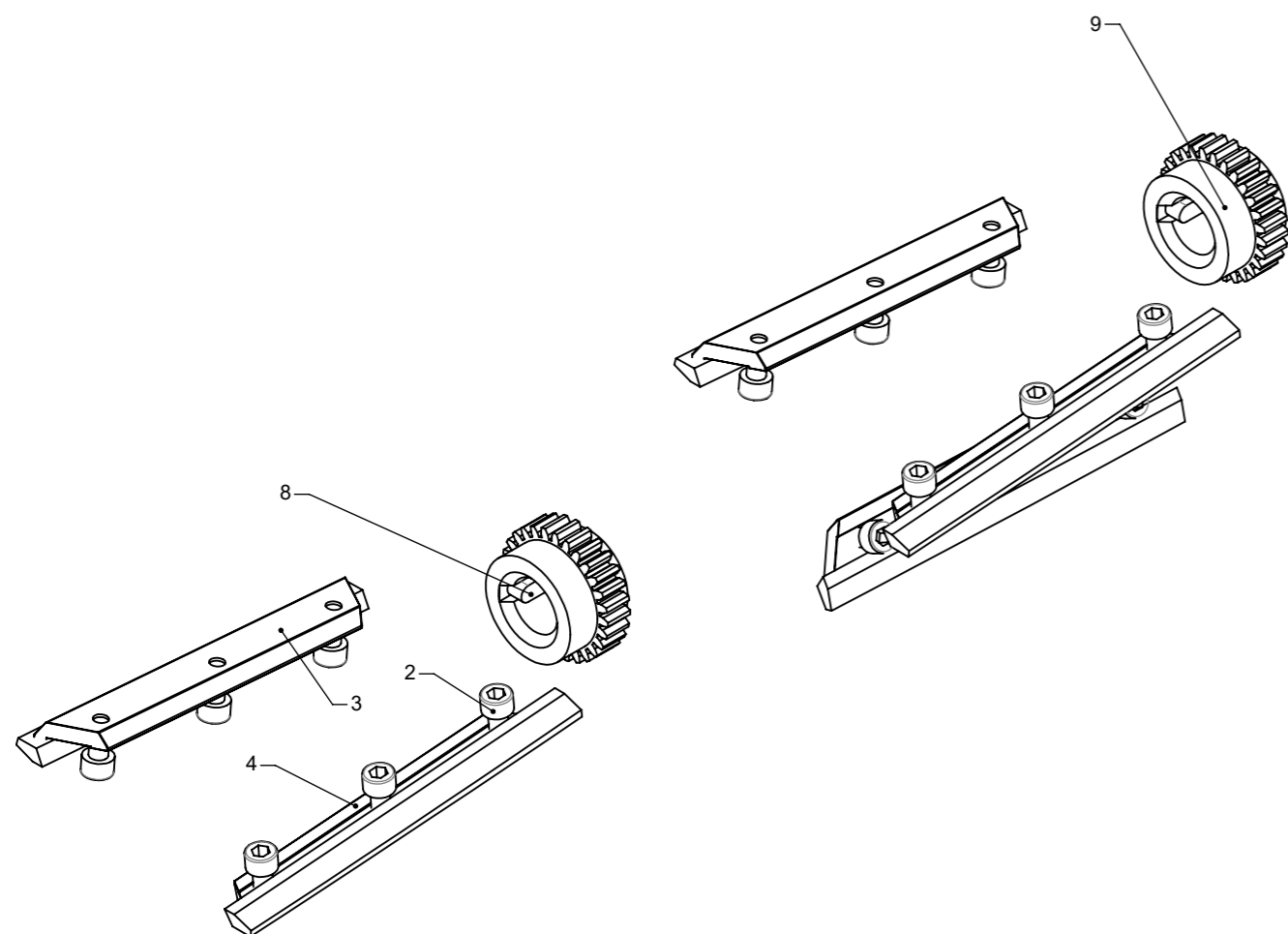


	Pos.	Spare parts list - page	Description
1	1	121115075-04-05	Cutter housing
1	2	121115075-06-07	Rotor with knives
1	3	121115075-08-09	Inlets and outlets
1	4	121115075-10-11	Motors

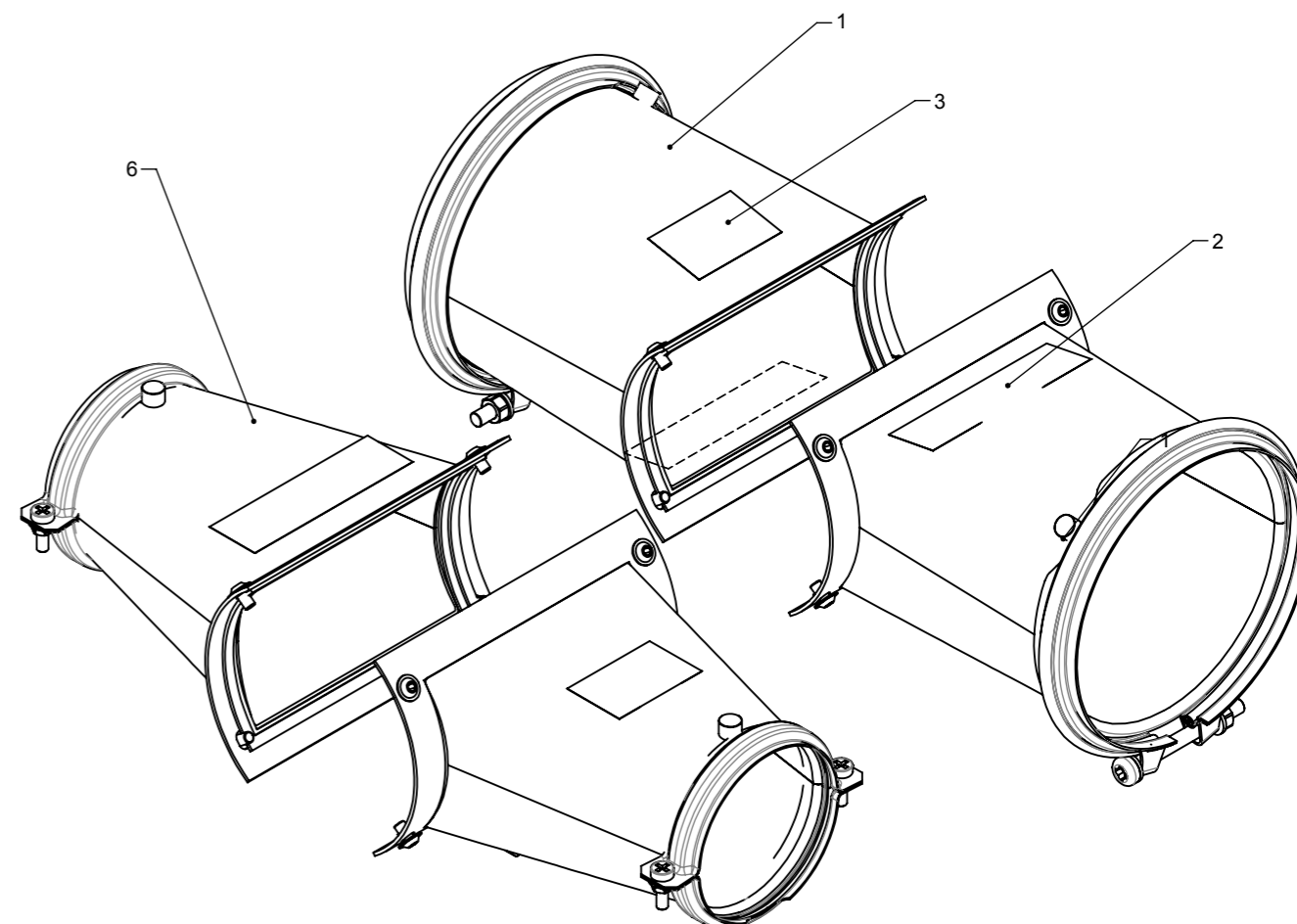
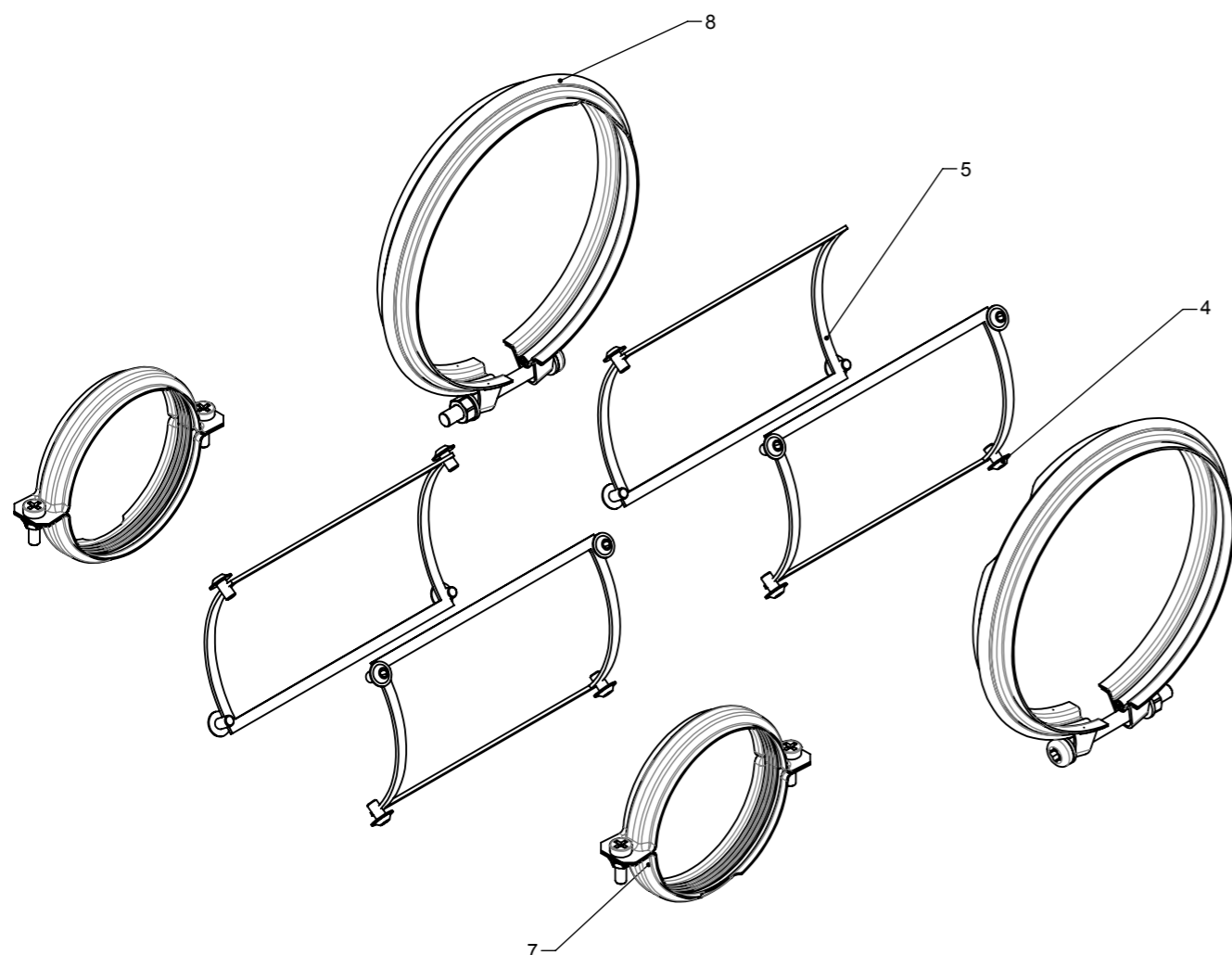


DETAIL B (2 : 1)

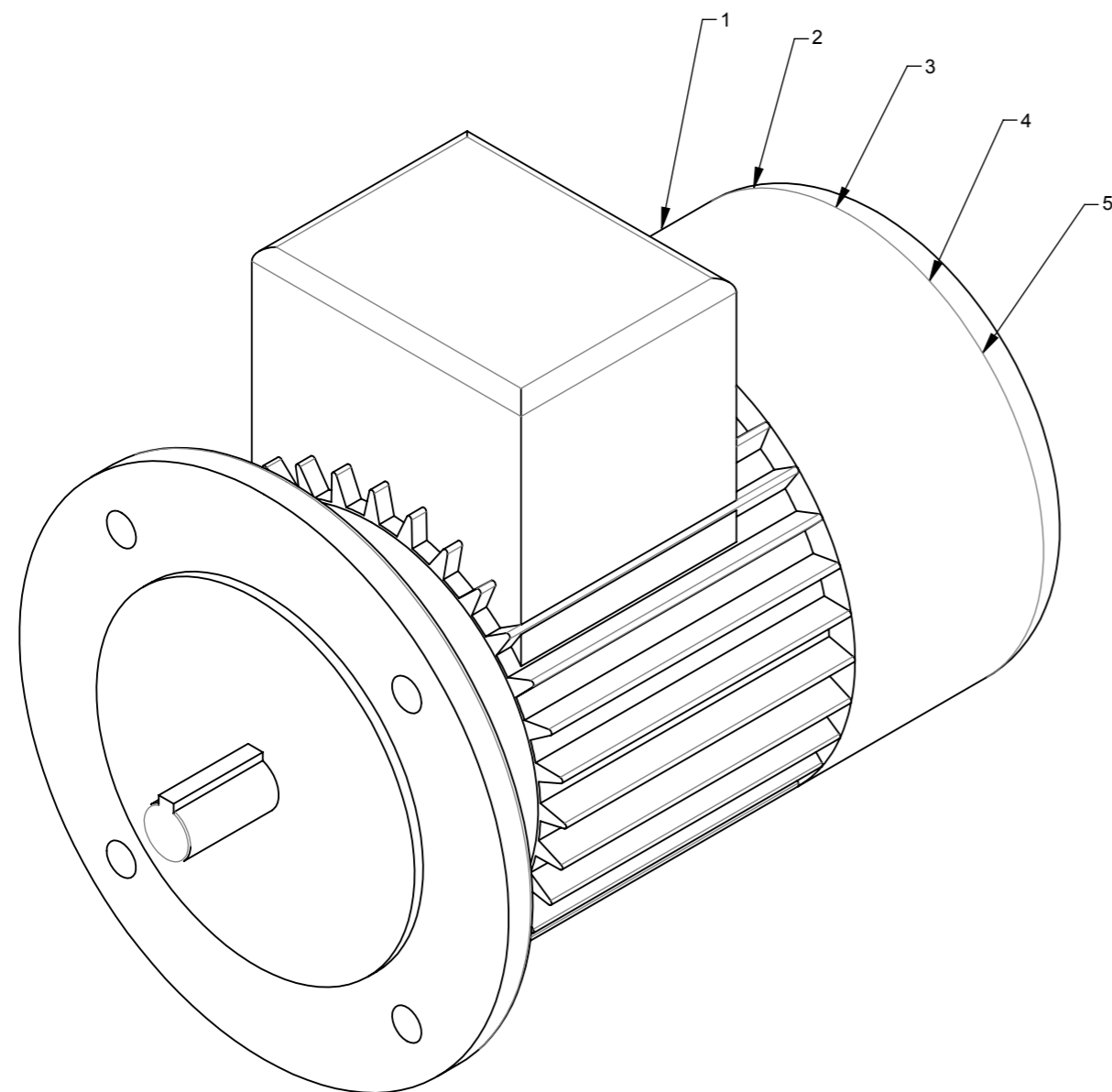
Pos.	Pcs.	Part no.	Description
1	1	121115001	Rear Cover
2	4	100333070	Pin $\varnothing 6 \times 32$ ISO8734
3	6	100323279	Screw M8x30 ISO 4762
4	3	100323276	Screw M5x12 DIN 7984
5	1	121115009	Retainer for fixed knife
6	2	121115051	Strip deflector
7	4	100309014	Screw M6x16 ISO 4762
8	1	121115067	Fixed knife
9	3	100323277	Screw M5x16 ISO 4762
10	3	100331003	Washer M5 ISO 7089
11	3	100322028	Set Screw M5x20 ISO 4026
12	3	100315005	Nut M5 ISO 4032
13	1	121115069	Bracket for switch
14	1	100503196	Switch 7.5 KW
15	1	121115060	Label "Direction of rotation MultiCutter", black on silver
16	1	121115071	Label "Read users manual", black on yellow
17	1	121115072	Label "Risk of cutting", black/red on yellow
18	1	121115073	Label "Disconnect electricity before service", black on yellow
19	2	121000325	Label "Arrow", black on white
20	4	100321008	Screw M4x16 ISO 14583 Torx 20
21	4	100315004	Nut M4 ISO 4032
22	1	121115085	Multicutter flow transfer



Pos.	Pieces	Part no.	Notes
1	1	121115039	Rotor mounted and grinded, including 2 knives
2	6	100323278	Screw M6x12 DIN4762
3	2	100425003	Rotor knife
4	2	121115010	Knife bracket
5	1	121115028	Rotor mounted and grinded, including 3 knives
6	2	100401076	Ball bearing 6006-2 RS1
7	2	100407041	Locking ring ø30x1,5
8	1	100405022	Key 6x6x22 Form A
9	2	121115003	Clutch innerpart Bowex ø19
10	1	121115019	Coupling outer part



Pos.	Pcs.	Part no.	Description
1	2	121109049	Transition OK160 to Multicutter
2	2	121115070	Label "KONGSKILDE MultiCutter", blue/black on transparent
3	1	121115091	Label "Use safety clamp", black on yellow
4	8	100323336	Flange screw M6x10 St.10.9 elgv, ISO 7380
5	2	121115074	Sealing for Multicutter transition 6x2mm
6	2	121115049	Transition OK100 to Multicutter
7	2	122040227	OK 100 Safety Bolt Clamp
8	2	122001078	Clamp with bolt OK160 for spec. safety joint



Pos.	Pieces	Part no.	Notes
1	1	100501028	AC Motor 80-2p B5 0,75kW 3.000rpm (3.600rpm) 3x230/400V (460V) 50Hz (60Hz) IE3 UL/CSA
2	1	100505010	AC Motor 80-4p B5 0,75kW 1.500rpm (1.750rpm) 3x230/400V (460V) 50Hz (60Hz) IE3 UL/CSA
3	1	100501136	AC Motor 80-6p B5 0,55kW 1.000rpm (1.250rpm) 3x230/400V (460V) 50Hz (60Hz) IE3 UL/CSA
4	1	100551116	AC Motor 80-2p B5 0,75kW 1.750rpm 3x460V 60Hz IE3 UL/CSA
5	1	100551117	AC Motor 80-2p B5 0,75kW 1.750rpm 3x575V 60Hz IE3 UL/CSA

**Kongskilde Industries A/S**

Skælskørvej 64

DK - 4180 Sorø

Tel. +45 72 17 60 00

[mail@kongskilde-industries.com](mailto:mail@kongskilde-industries.com)

[www.kongskilde-industries.com](http://www.kongskilde-industries.com)