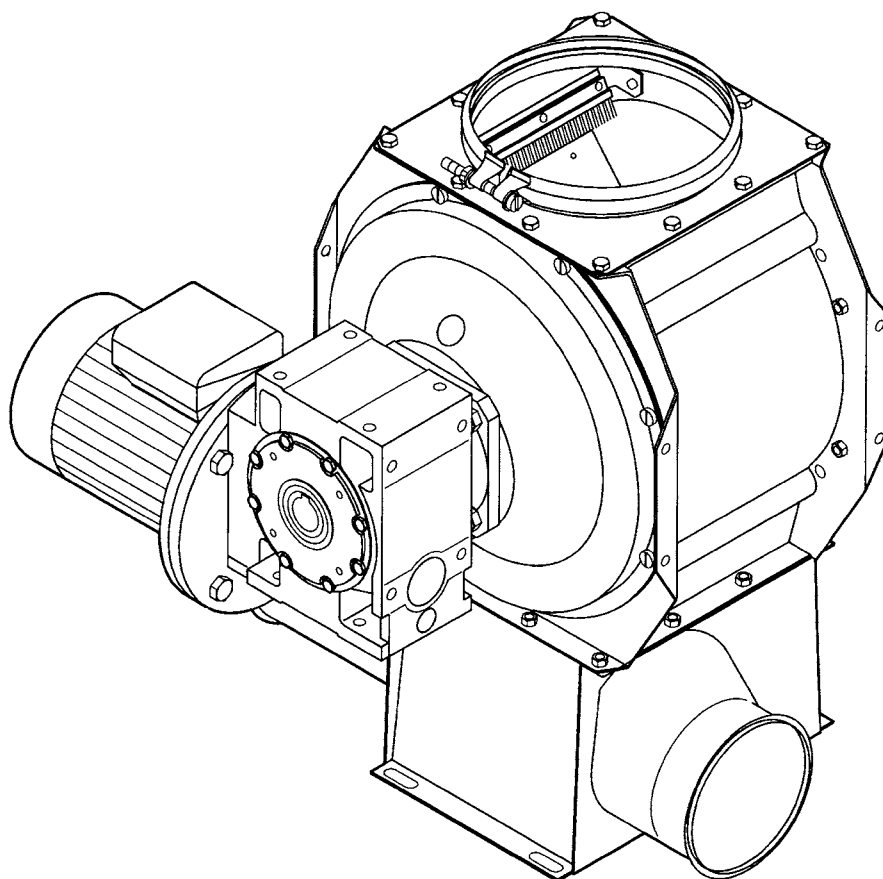


RF 40

Rotary Valve



Spare parts list

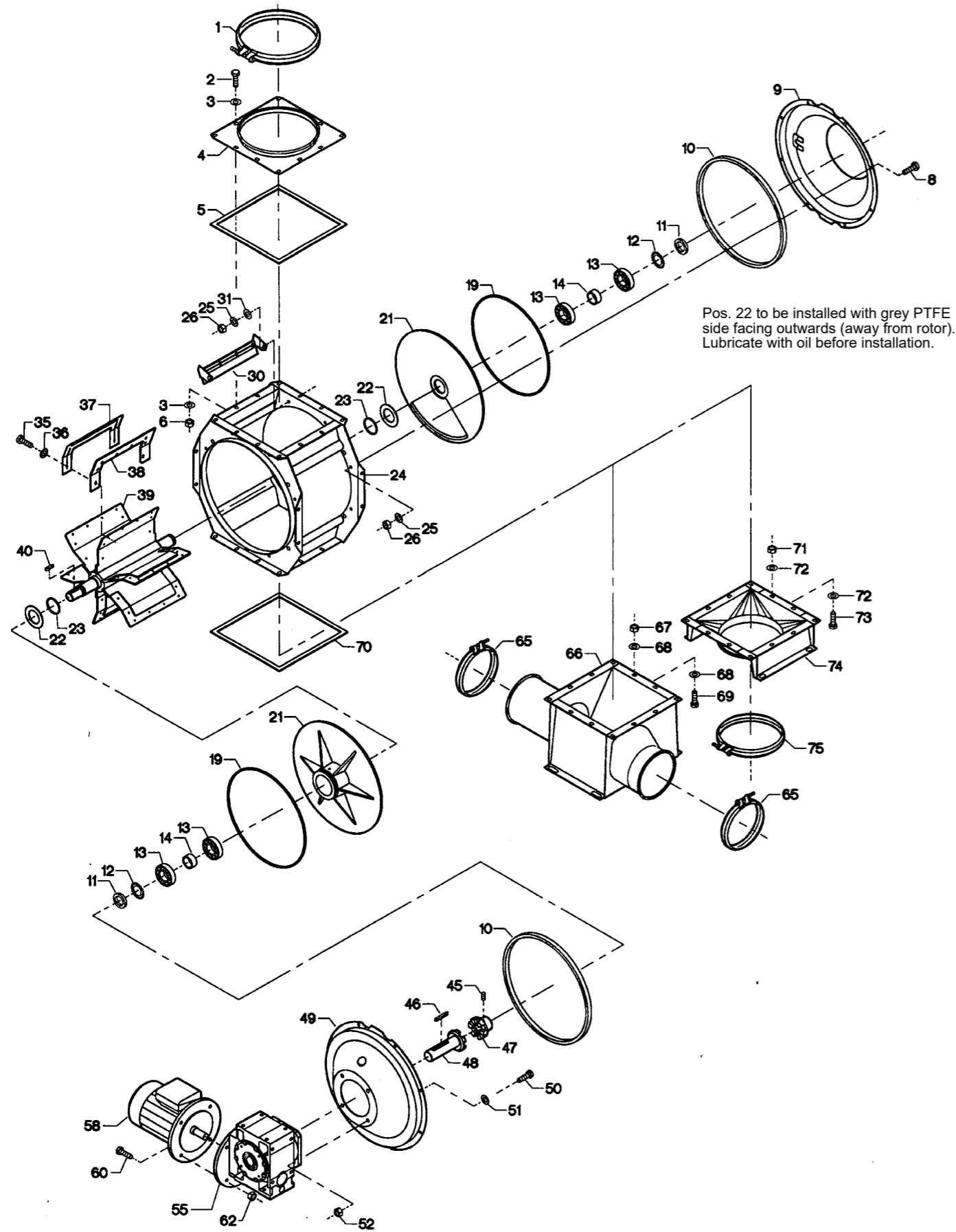


Fig.	Part no.	Pieces	Notes
1	122 000 701	1	Bolt clamp OK250
2	100 306 014	12	Set screw M8 x 16 mm
3	100 331 005	24	Flat washer M8
4	121 108 235	1	Inlet OK250
5	100 202 011	-	10 x 8 mm. Order 1,2 m
6	100 315 012	12	Nut M8
8	100 306 015	16	Set screw M8 x 20 mm
9	121 108 230	1	Cover for RF40
10	100 202 046	-	10 x 12 mm. Order 2.5 m
11	100 323 315	2	Nut M35 x 1,5 mm KM7
12	100 407 046	2	Lock washer MB7
13	100 401 003	4	Ball bearing 6207 - 2RS1
14	121 108 171	2	Distance bushing Ø42,5/Ø35 x 20mm
19	100 413 144	2	O-ring ø350 x ø4 mm
21	121 108 166	2	Rotor side cover RF40
22	100 402 025	2	Axial bearing FA52
23	100 413 148	2	O-ring ø58 x ø3 mm
24	121 108 232	1	Housing for rotor RF40
25	100 332 003	16	Star washer M8
26	100 315 012	16	Nut M8
30	121 108 282	1	Rubber blade scraper
31	100 331 005	2	Flat washer M8
35	100 321 010	48	Torx screw M5 x 12 mm
36	100 332 001	48	Star washer M5
37	121 108 273	6	Rubber blade retainer
38	121 108 274	6	Rubber blade
39	121 108 271	1	Rotor for RF40
Cpl	121 108 269	1	Complete incl. items 35 - 39
40	100 405 000	1	Key 8 x 7 x 35 mm
45	100 322 001	1	Stop screw M6 x 10 mm
46	100 405 035	1	Key 10 x 8 x 70 mm
47	121 108 275	1	Clutch part Ø30mm for rotor
48	121 108 277	1	Clutch part Ø32mm for gear
49	121 108 278	1	Cover for gear side, RF40
50	100 306 044	4	Set screw M12 x 40 mm
51	100 332 021	4	Star washer M12
Cpl	121 108 268	1	Complete incl. items 2 - 40 + 49 - 51
52	100 316 005	4	Lock nut M12
55	100 505 072	1	Gear SK1 SI63F-IEC90/B5, l=40
	100 505 078	1	Gear SK1 SI63F-IEC90/B5, l=25
	100 505 075	1	Gear SK1 SI63F-IEC90/B5, l=20
	100 505 073	1	Gear SK1 SI63F-IEC90/B5, l=32
	100 505 148	1	Motor/gear flange IEC90 A200 1SI63 (not shown)
58	100 505 011	1	AC Motor 90S-4p B5 1,1(1,1)kW 3x230/400(460)V 50(60)Hz IE3 UL/CSA
	100 505 012	1	AC Motor 90L-4p B5 1,5(1,5)kW 3x230/400(460)V 50(60)Hz IE3 UL/CSA
	100 501 189	1	AC Motor 90L-4p B5 2,2(2,2)kW 3x230/400(460)V 50(60)Hz IE3 UL/CSA
	100 551 098	1	Motor D90LD - B5, 2.0 HP-460V-60Hz-1725 rpm
60	100 551 097	1	Motor D90LD - B5, 2.0 HP-575V-60Hz-1725 rpm
	100 306 031	4	Bolt M10 x 35 mm (For motor type 90)
	100 306 044	4	Bolt M12 x 40 mm (For motor type 100)
62	100 316 004	4	Lock nut M10 (For motor type 90)
	100 316 005	4	Lock nut M12 (For motor type 100)
65	122 001 078	2	Bolt clamp OK160, for spec. safety joint
66	121 108 243	1	Bottom part RFD / CAD 40
67	100 315 012	12	Nut M8
68	100 331 005	24	Flat washer M8
69	100 306 014	12	Set screw M8 x 15 mm
70	100 202 011	-	10 x 8 mm. Order 1,2 m
Cpl	121 108 190	1	Complete incl. items 65 - 70
71	100 315 012	12	Nut M8
72	100 331 005	24	Flat washer M8
73	100 306 014	12	Set screw M8 x 15 mm
74	121 108 240	1	Bottom part RFE / CAE 40
75	122 050 237	1	Bolt clamp OK200, for spec. safety joint
Cpl	121 108 241	1	Complete incl. items 70 - 75

Kongskilde Industries A/S

Skælskørvej 64

DK - 4180 Sorø

Tel. +45 72 17 60 00

mail@kongskilde-industries.com

www.kongskilde-industries.com