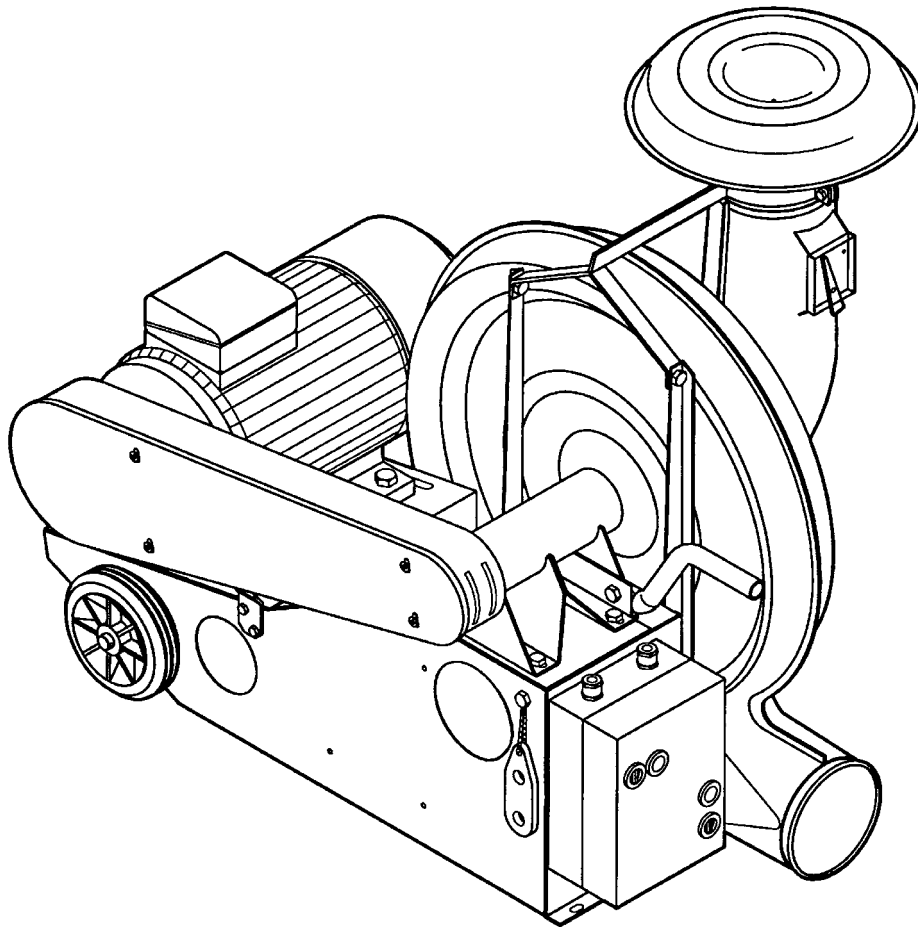


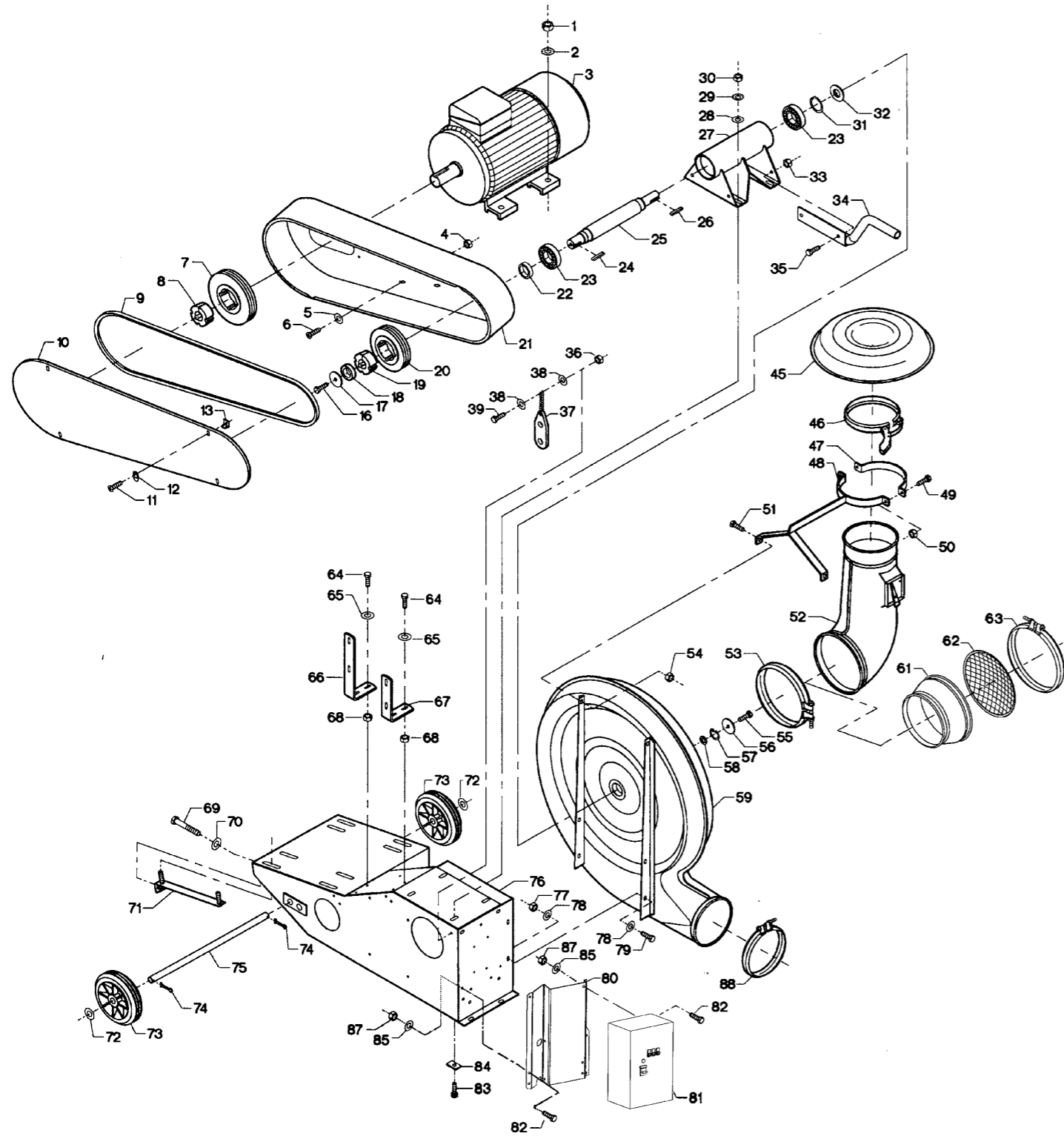
TRL 200

High pressure blower



Spare parts list

TRL 200 - 50 & 60 Hz



Spare parts list / TRL 200 - 50 & 60 Hz. Date: 02.2022

| Fig. | Part no. | Pieces | Notes |
|------|-------------|--------|--------------------------------------------------------------------------------------|
| 1 | 100 315 016 | 4 | Nut M12 |
| 2 | 100 332 005 | 4 | Star washer M12 |
| 3 | 100 501 091 | 1 | Motor 160Mx2 - B3 - 15.0 kW - 3 x 400 V - 50 Hz |
| | 100 551 069 | 1 | Motor 256T - 20 HP - 460 V - 60 Hz - 3525 rpm - M4106T |
| | 100 551 070 | 1 | Motor 256T - 20 HP - 575 V - 60 Hz - 3525 rpm - M4106T5 |
| | 100 501 310 | 1 | Motor 160 M2 15kW B3 3 x 440V 60Hz |
| 4 | 100 316 075 | 4 | Flanged nut M6 |
| 5 | 100 331 004 | 4 | Flat washer M6 |
| 6 | 100 321 015 | 4 | Torx screw M6 x 16 mm |
| 7 | 121 081 167 | 1 | V-belt pulley SPZ 200 with 3 grooves, TB-2012 |
| | 121 090 067 | 1 | V-belt pulley SPZ 224 with 3 grooves, TB-2012 |
| 8 | 121 090 087 | 1 | V-belt pulley SPZ 190 with 3 grooves, TB-2012 |
| | 123 000 298 | 1 | TB-2012-1 5/8" |
| | 123 000 471 | 1 | TB-2012-42 (50 Hz) |
| 9 | 100 403 241 | 3 | Raw edge moulded notch V-belt SPZ, 1787 |
| 10 | 121 123 232 | 1 | |
| 11 | 100 321 010 | 4 | Torx screw M5 x 12 mm |
| 12 | 121 000 686 | 4 | |
| 13 | 121 000 402 | 4 | |
| 16 | 100 306 030 | 1 | Screw M10 x 30 mm |
| 17 | 121 000 060 | 1 | Flat washer ø53/11 x 3 mm |
| 18 | 123 000 378 | 1 | Spacer |
| 19 | 123 000 183 | 1 | TB-2012-32 |
| 20 | 121 081 165 | 1 | V-belt pulley SPZ 160 with 3 grooves, TB-2012 (for 60 Hz models) |
| 21 | 121 081 164 | 1 | V-belt pulley SPZ 132 with 3 grooves, TB-2012 (for 50 Hz models) |
| | 121 081 170 | 1 | |
| 22 | 113 026 064 | 1 | |
| 23 | 100 401 072 | 2 | Ball bearing # 6208-2RSR C3 L12 |
| 24 | 100 405 014 | 1 | Key 10 x 8 x 28 mm |
| 25 | 113 026 063 | 1 | |
| 26 | 100 405 015 | 1 | Key 8 x 7 x 36 mm |
| 27 | 113 026 067 | 1 | |
| Cpl: | 121 090 044 | 1 | Incl. Fig. 22 - 27 + 31 |
| 28 | 100 331 006 | 4 | Flat washer M10 |
| 29 | 100 332 004 | 4 | Star washer M10 |
| 30 | 100 315 013 | 4 | Nut M10 |
| 31 | 100 407 012 | 1 | Circlip ø40 x 1.5 mm |
| 32 | 121 090 038 | 1 | |
| 33 | 100 316 004 | 2 | Lock nut M10 |
| 34 | 121 081 150 | 1 | |
| | 121 081 193 | 1 | |
| 35 | 100 306 029 | 2 | Screw M10 x 25 mm |
| 36 | 100 316 002 | 1 | Nut M6 |
| 37 | 100 511 000 | 1 | |
| 38 | 100 331 004 | 2 | Flat washer M6 |
| 39 | 100 306 001 | 1 | Screw M6 x 20 mm |
| 45 | 121 123 148 | 1 | |
| 46 | 122 000 825 | 1 | Quick release clamp OKR160 |
| 47 | 121 140 174 | 1 | |
| 48 | 121 005 082 | 1 | |
| 49 | 100 308 032 | 2 | Screw M8 x 35 mm |
| 50 | 100 316 003 | 2 | Lock nut M8 |
| 51 | 100 308 032 | 2 | Screw M8 x 35 mm |
| 52 | 121 120 378 | 1 | OK 200/160 air regulation for transport blowers SUC/TRL 100 - 200 with OK 200 intake |
| | 121 140 175 | 1 | OK 200/160 special 90° bend for intermediate pipe on SUC blowers |
| 53 | 122 050 110 | 1 | Bolt clamp OK200 |
| 54 | 100 316 003 | 2 | Lock nut M8 |
| 55 | 100 306 030 | 1 | Screw M10 x 30 mm |
| 56 | 121 000 060 | 1 | Flat washer ø53/11 x 3 mm |
| 57 | 100 407 001 | 1 | Circlip ø28 x 1.2 mm |
| 58 | 121 000 027 | 1 | Flat washer ø27.8/17 x 2 mm |
| 59 | 121 090 047 | 1 | |
| 61 | 122 050 075 | 1 | |
| 62 | 131 020 088 | 1 | |
| 63 | 122 000 701 | 1 | Bolt clamp OK250 |
| 64 | 100 306 001 | 4 | Screw M6 x 20 mm |
| 65 | 100 331 004 | 4 | Flat washer M6 |
| 66 | 121 081 180 | 1 | |
| 67 | 121 081 179 | 1 | |
| 68 | 100 316 002 | 4 | Lock nut M6 |
| 69 | 100 308 017 | 2 | Screw M12 x 130 mm |
| 70 | 100 331 007 | 2 | Flat washer M12 |
| 71 | 121 080 133 | 2 | |
| 72 | 100 331 009 | 2 | Flat washer M20 |
| 73 | 100 412 001 | 2 | Wheel MA-EN 508 50/20-180/45 |
| 74 | 100 333 004 | 2 | Split pin ø5 x 30 mm |

Kongskilde Industries A/S

Skælskørvej 64

DK - 4180 Sorø

Tel. +45 72 17 60 00

mail@kongskilde-industries.com

www.kongskilde-industries.com