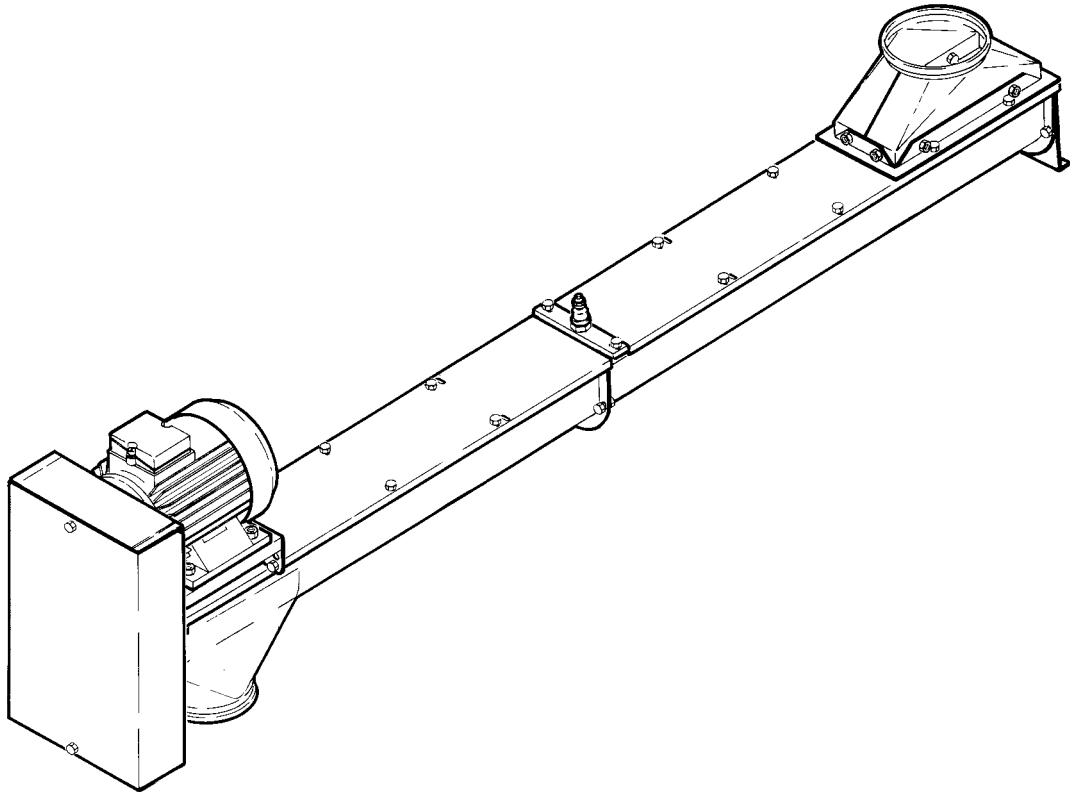


DTA 102, 127, 152, 205 & 254

Trough Auger



Spare parts list

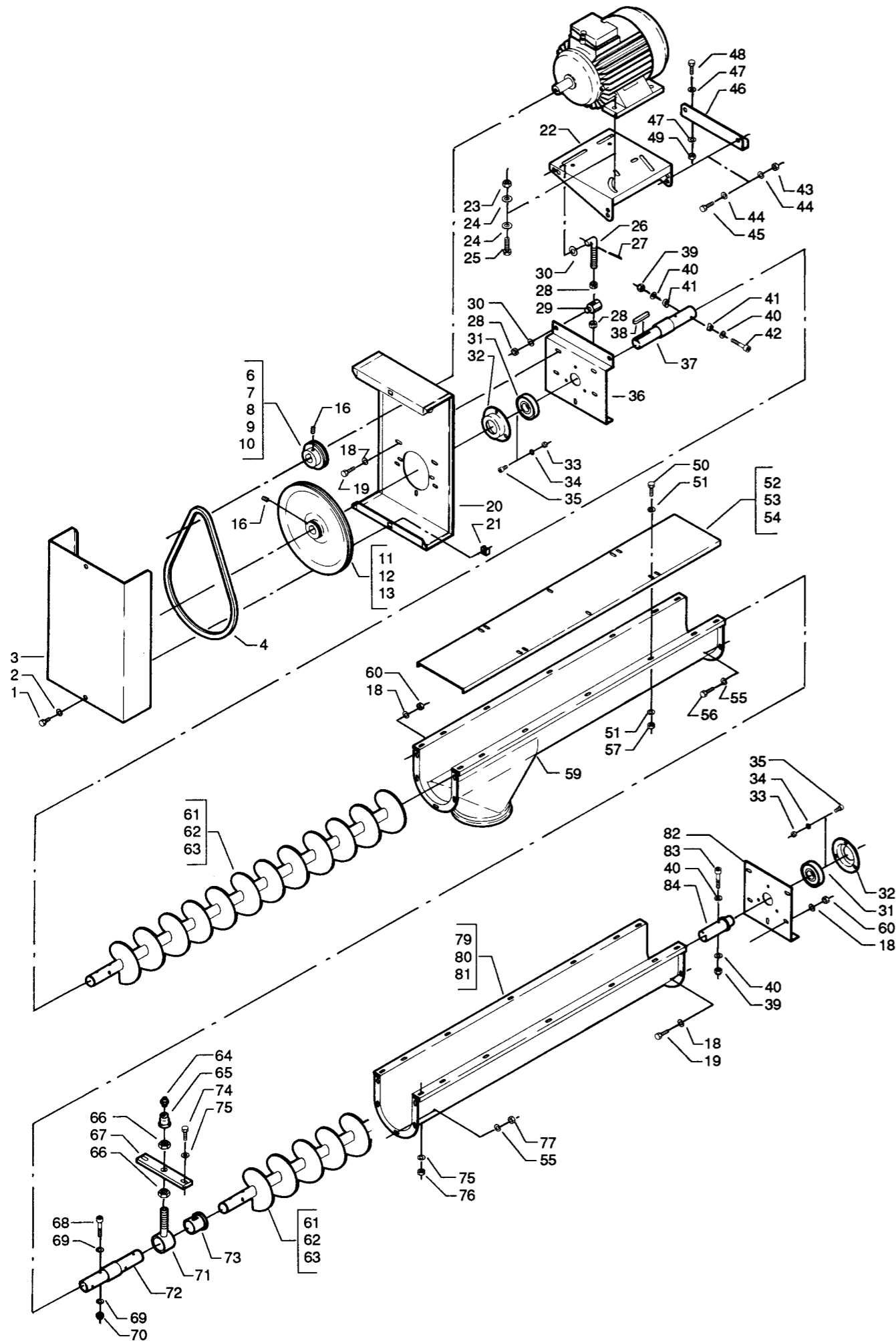


Fig.	Pack	Part no.	Pieces	Notes
1		100 306 014	2	Set screw st.8.8 M8 x 15mm
2		100 331 005	2	Flat washer M8
3		171 601 335	1	Outside belt guard
4		100 403 016	1-3	V-belt A38
6		170 030 012	1	V-belt pulley SPA 63 with 1 groove, boring ø 19 mm
7		170 030 014	1	V-belt pulley SPA 63 with 1 groove, boring ø 24 mm
8		170 030 020	1	V-belt pulley SPA 63 with 2 grooves, boring ø 24 mm
9		170 030 022	1	V-belt pulley SPA 63 with 2 grooves, boring ø 28 mm
10		170 030 028	1	V-belt pulley SPA 63 with 3 grooves, boring ø 28 mm
11		170 030 132	1	V-belt pulley SPA 250 with 1 groove, boring ø 20 mm
12		170 030 135	1	V-belt pulley SPA 250 with 2 grooves, boring ø 20 mm
13		170 030 138	1	V-belt pulley SPA 250 with 3 grooves, boring ø 20 mm
16		100 322 023	2	Stop screw M8 x 8 mm
18		100 331 004	20	Flat washer M6
19		100 323 041	10	Set screw st.8.8 M6 x 15 mm
20		171 601 334	1	Inside belt guard
21		100 323 303	2	Clips nut M8
22		171 001 301	1	Motor mounting plate
23		100 315 013	4	Nut st.8.8 M10
24		100 331 006	8	Flat washer M10
25		100 306 030	4	Set screw st.8.8 M10 x 30 mm
26		170 022 101	2	Stretching screw M10
27		100 333 076	2	Split pin ø 3.2 x 25 mm
28		100 315 013	6	Nut st.8.8 M10
29		170 022 100	2	Stud bolt M10
30		100 331 006	4	Flat washer M10
31		100 401 006	2	Ball bearing # 6304-2RS
32		171 001 303	2	Bearing cover
33		100 315 028	6	Nut st.8.8 M6
34		100 332 018	6	Star washer M6
35		100 323 278	6	Hex-socket cap screw M6 x 12 mm
36		171 601 336	1	End plate
37		171 601 189	1	Shaft
38		100 405 028	1	Key 6 x 6 x 45 mm
39		100 316 002	3	Lock nut M6
40		100 331 004	6	Flat washer M6
41		100 331 073	4	Dished washer M6
42		100 309 003	2	Hex-socket cap screw M6 x 40 mm
43		100 315 013	2	Nut st.8.8 M10
44		100 331 006	4	Flat washer M10
45		100 306 029	2	Set screw st.8.8 M10 x 25 mm
46		171 601 301	1	Bracket for mounting plate
47		100 331 006	4	Flat washer M10
48		100 306 029	2	Set screw st.8.8 M10 x 25 mm
49		100 315 013	2	Nut st.8.8 M10
50		100 308 029	6	Set screw st.8.8 M8 x 12 mm
51		100 331 005	12	Flat washer M8
52		171 621 304	1	Cover, 1 m
53		171 621 303	1	Cover, 1.5 m
54		171 621 302	1	Cover, 2 m
55		100 331 004	10	Flat washer M6
56		100 323 041	5	Set screw st.8.8 M6 x 16 mm
57		100 315 012	6	Nut st.8.8 M8
59		171 601 116	1	Trough with outlet, 2 m
60		100 315 028	10	Nut st.8.8 M6
61		171 601 187	1	Flight, 1 m
62		171 601 186	1	Flight, 1.5 m
63		171 601 185	1	Flight, 2 m
64		100 421 005	1	Grease nipple 1/4" WRG
65		100 316 071	1	Socket
66		100 316 069	2	Counter nut 3/8" WRG
67		171 601 314	1	Crossbar
68		100 309 002	4	Hex-socket cap screw M6 x 35 mm
69		100 331 004	8	Flat washer M6
70		100 316 002	4	Lock nut M6
71		171 601 191	1	Bearing housing
73		171 601 360	1	Nylon bearing Ø20xØ25x25 mm
CPL		171 601 109	1	Fig. 71 + 72 + 73. Repair kit for intermediete bearing
74		100 306 015	2	Set screw st.8.8 M8 x 20 mm
75		100 331 005	4	Flat washer M8
76		100 315 012	2	Nut st.8.8 M8
77		100 315 028	5	Nut st.8.8 M6
79		171 601 124	1	Trough without outlet, 1m
80		171 601 123	1	Trough without outlet, 1.5m
81		171 601 122	1	Trough without outlet, 2m
82		171 601 337	1	End plate
83		100 309 002	1	Hex-socket cap screw M6 x 35 mm
84		171 601 188	1	Shaft

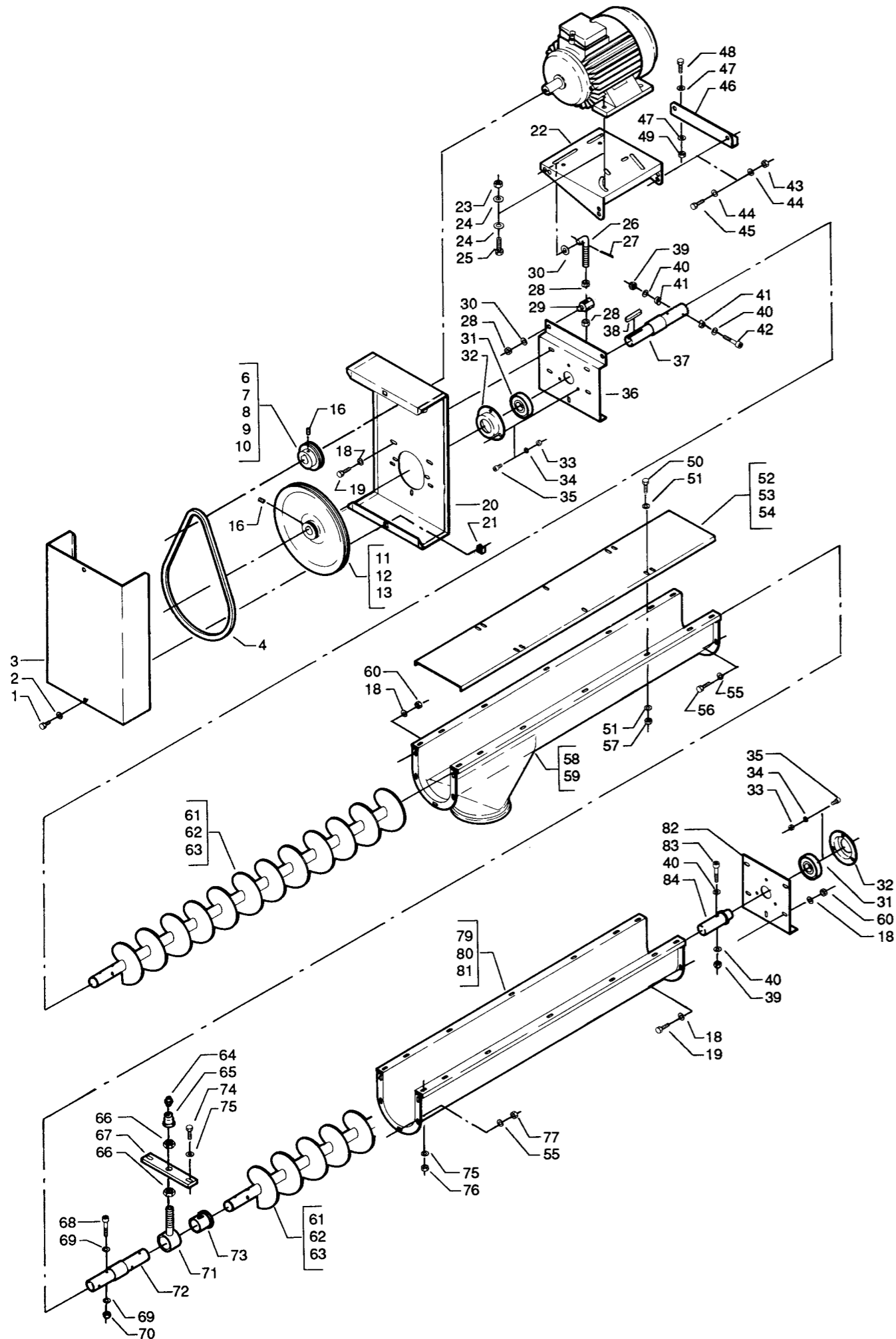


Fig.	Pack	Part no.	Pieces	Notes
1		100 306 014	2	Set screw st.8.8 M8 x 15 mm
2		100 331 005	2	Flat washer M8
3		171 601 335	1	Outside belt guard
4		100 403 079	1-3	V-belt A40
6		170 030 012	1	V-belt pulley SPA 63 with 1 groove, boring ø 19 mm
7		170 030 014	1	V-belt pulley SPA 63 with 1 groove, boring ø 24 mm
8		170 030 020	1	V-belt pulley SPA 63 with 2 grooves, boring ø 24 mm
9		170 030 022	1	V-belt pulley SPA 63 with 2 grooves, boring ø 28 mm
10		170 030 028	1	V-belt pulley SPA 63 with 3 grooves, boring ø 28 mm
11		170 030 133	1	V-belt pulley SPA 250 with 1 groove, boring ø 25mm
12		170 030 136	1	V-belt pulley SPA 250 with 2 grooves, boring ø 25 mm
13		170 030 139	1	V-belt pulley SPA 250 with 3 grooves, boring ø 25 mm
16		100 322 023	2	Stop screw M8 x 8 mm
18		100 331 004	20	Flat washer M6
19		100 323 041	10	Set screw st.8.8 M6 x 15 mm
20		171 601 334	1	Inside belt guard
21		100 323 303	2	Clips nut M8
22		171 001 301	1	Motor mounting plate
23		100 315 013	4	Nut st.8.8 M10
24		100 331 006	8	Flat washer M10
25		100 306 030	4	Set screw st.8.8 M10 x 30 mm
26		170 022 101	2	Stretching screw M10
27		100 333 076	2	Split pin ø 3.2 x 25 mm
28		100 315 013	6	Nut st.8.8 M10
29		170 022 100	2	Stud bolt M10
30		100 331 006	4	Flat washer M10
31		100 401 063	2	Ball bearing # 6305-2RS1
32		171 003 301	2	Bearing cover
33		100 315 012	6	Nut st.8.8 M8
34		100 332 019	6	Star washer M8
35		100 309 004	6	Hex-socket cap screw M8 x 16 mm
36		171 602 331	1	End plate
37		171 602 338	1	Shaft
38		100 405 013	1	Key 8 x 7 x 50 mm
39		100 316 003	3	Lock nut M8
40		100 331 005	6	Flat washer M8
41		100 331 074	4	Dished washer M8
42		100 309 009	2	Hex-socket cap screw M8 x 55 mm
43		100 315 013	2	Nut st.8.8 M10
44		100 331 006	4	Flat washer M10
45		100 306 029	2	Set screw st.8.8 M10 x 25 mm
46		171 602 301	1	Bracket for motor mounting plate
47		100 331 006	4	Flat washer M10
48		100 306 029	2	Set screw st.8.8 M10 x 25 mm
49		100 315 013	2	Nut st.8.8 M10
50		100 308 029	6	Set screw st.8.8 M8 x 12 mm
51		100 331 005	12	Flat washer M8
52		171 621 308	1	Cover, 1 m
53		171 621 307	1	Cover, 1.5 m
54		171 621 306	1	Cover, 2 m
55		100 331 004	10	Flat washer M6
56		100 323 041	5	Set screw st.8.8 M6 x 16 mm
57		100 315 012	6	Nut st.8.8 M8
58		171 602 118	1	Trough with outlet, 1 m
59		171 602 116	1	Trough with outlet, 2 m
60		100 315 028	10	Nut st.8.8 M6
61		171 602 335	1	Flight, 1 m
62		171 602 334	1	Flight, 1.5 m
63		171 602 333	1	Flight, 2 m
64		100 421 005	1	Grease nipple 1/4" WRG
65		100 316 071	1	Socket
66		100 316 069	2	Counter nut 3/8" WRG
67		171 602 314	1	Crossbar
68		100 309 007	4	Hex-socket cap screw M8 x 45 mm
69		100 331 005	8	Flat washer M8
70		100 316 003	4	Lock nut M8
71		171 602 340	1	Bearing housing
73		171 602 360	1	Nylon bearing Ø30xØ35x40 mm
CPL		171 602 109	1	Fig. 71 + 72 + 73. Repair kit for intermidiete bearing
74		100 306 015	2	Set screw st.8.8 M8 x 20 mm
75		100 331 005	4	Flat washer M8
76		100 315 012	2	Nut st.8.8 M8
77		100 315 028	5	Nut st.8.8 M6
79		171 602 124	1	Trough without outlet, 1m
80		171 602 123	1	Trough without outlet, 1.5m
81		171 602 122	1	Trough without outlet, 2m
82		171 602 332	1	End plate
83		100 309 007	1	Hex-socket cap screw M8 x 45 mm
84		171 602 337	1	Shaft

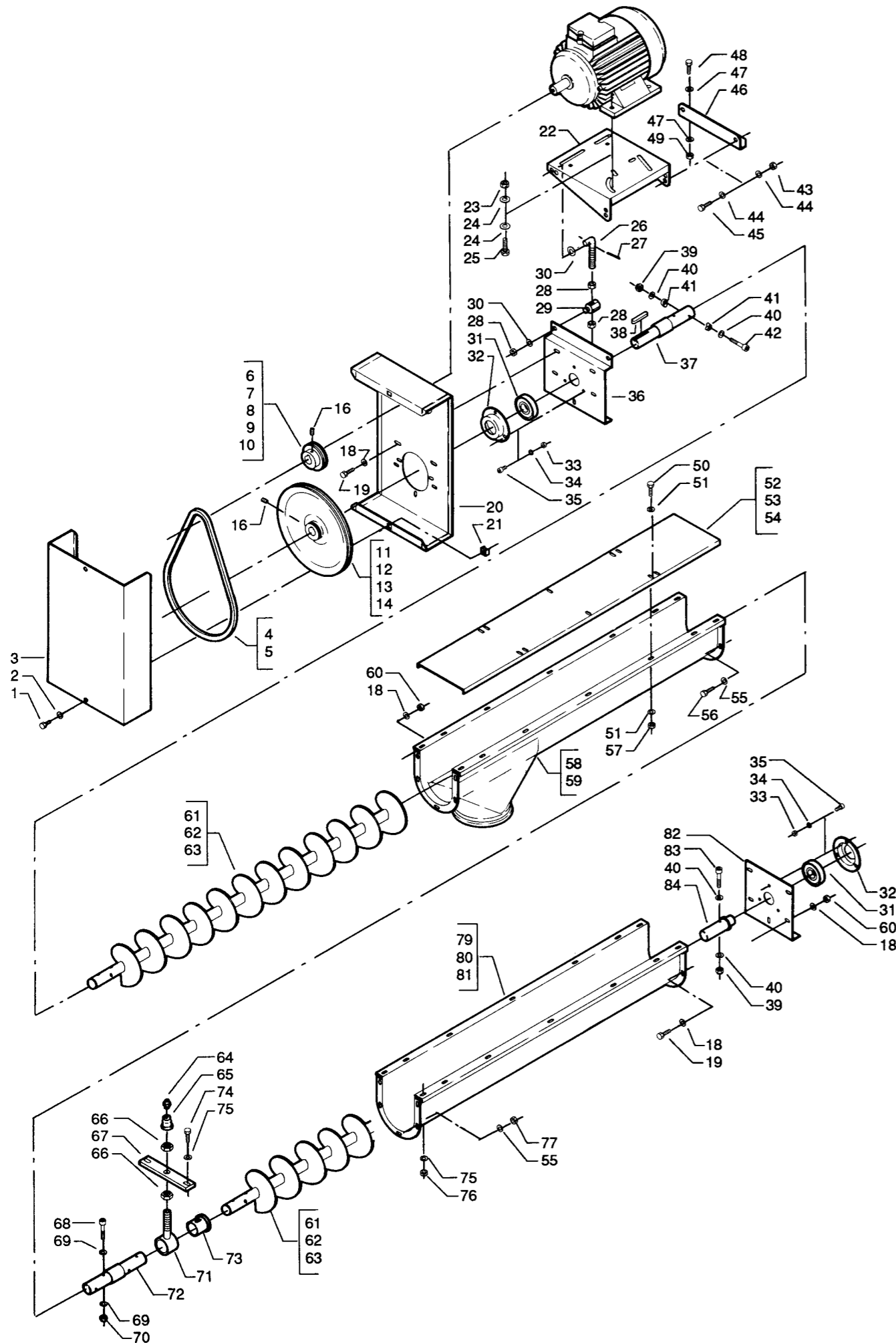


Fig.	Pack	Part no.	Pieces	Notes
1		100 306 014	2	Set screw st.8.8 M8 x 15 mm
2		100 331 005	2	Flat washer M8
3		171 603 327	1	Outside belt guard
4		100 403 021	1-2	V-belt A47
5		100 403 043	3-4	V-belt A50
6		170 030 044	1	V-belt pulley SPA 71 with 1 groove, boring ø 24 mm
7		170 030 052	1	V-belt pulley SPA 71 with 2 grooves, boring ø 24 mm
8		170 030 054	1	V-belt pulley SPA 71 with 2 grooves, boring ø 28 mm
9		170 030 060	1	V-belt pulley SPA 71 with 3 grooves, boring ø 28 mm
10		170 030 062	1	V-belt pulley SPA 71 with 4 grooves, boring ø 38 mm
11		170 030 152	1	V-belt pulley SPA 315 with 1 groove, boring ø 25mm
12		170 030 157	1	V-belt pulley SPA 315 with 2 grooves, boring ø 25 mm
13		170 030 162	1	V-belt pulley SPA 315 with 3 grooves, boring ø 25 mm
14		170 030 166	1	V-belt pulley SPA 315 with 4 grooves, boring ø 25 mm
16		100 322 023	2	Stop screw M8 x 8 mm
18		100 331 005	20	Flat washer M8
19		100 306 015	10	Set screw st.8.8 M8 x 20 mm
20		171 603 326	1	Inside belt guard
21		100 323 303	2	Clips nut M8
22		171 004 301	1	Motor mounting plate
23		100 315 013	4	Nut st.8.8 M10
24		100 331 006	8	Flat washer M10
25		100 306 030	4	Set screw st.8.8 M10 x 30 mm
26		170 022 101	2	Stretching screw M10
27		100 333 076	2	Split pin ø 3.2 x 25 mm
28		100 315 013	6	Nut st.8.8 M10
29		170 022 100	2	Stud bolt M10
30		100 331 006	4	Flat washer M10
31		100 401 063	2	Ball bearing # 6305-2RS1
32		171 003 301	2	Bearing cover
33		100 315 012	6	Nut st.8.8 M8
34		100 332 019	6	Star washer M8
35		100 309 004	6	Hex-socket cap screw M8 x 16 mm
36		171 603 328	1	End plate
37		171 602 338	1	Shaft
38		100 405 013	1	Key 8 x 7 x 50 mm
39		100 316 003	3	Lock nut M8
40		100 331 005	6	Flat washer M8
41		100 331 074	4	Dished washer M8
42		100 309 009	2	Hex-socket cap screw M8 x 55 mm
43		100 315 013	2	Nut st.8.8 M10
44		100 331 006	4	Flat washer M10
45		100 306 029	2	Set screw st.8.8 M10 x 25 mm
46		171 603 301	1	Bracket for motor mounting plate
47		100 331 006	4	Flat washer M10
48		100 306 029	2	Set screw st.8.8 M10 x 25 mm
49		100 315 013	2	Nut st.8.8 M10
50		100 308 029	6	Set screw st.8.8 M8 x 12 mm
51		100 331 005	12	Flat washer M8
52		171 621 312	1	Cover, 1 m
53		171 621 311	1	Cover, 1.5 m
54		171 621 310	1	Cover, 2 m
55		100 331 005	10	Flat washer M8
56		100 306 015	5	Set screw st.8.8 M8 x 20 mm
57		100 315 012	6	Nut st.8.8 M8
58		171 603 118	1	Trough with outlet, 1 m
59		171 603 116	1	Trough with outlet, 2 m
60		100 315 028	10	Nut st.8.8 M6
61		171 603 335	1	Flight, 1 m
62		171 603 334	1	Flight, 1.5 m
63		171 603 333	1	Flight, 2 m
64		100 421 005	1	Grease nipple 1/4" WRG
65		100 316 071	1	Socket
66		100 316 069	2	Counter nut 3/8" WRG
67		171 603 311	1	Crossbar
68		100 309 007	4	Hex-socket cap screw M8 x 45 mm
69		100 331 005	8	Flat washer M8
70		100 316 003	4	Lock nut M8
71		171 603 336	1	Bearing housing
73		171 602 360	1	Nylon bearing Ø30xØ35x40 mm
CPL		171 603 109	1	Fig. 71 + 72 + 73. Repair kit for intermidiete bearing
74		100 306 029	2	Set screw st.8.8 M10 x 25 mm
75		100 331 006	4	Flat washer M10
76		100 315 013	2	Nut st.8.8 M10
77		100 315 012	5	Nut st.8.8 M8
79		171 603 124	1	Trough without outlet, 1 m
80		171 603 123	1	Trough without outlet, 1.5 m
81		171 603 122	1	Trough without outlet, 2 m
82		171 603 329	1	End plate
83		100 309 007	1	Hex-socket cap screw M8 x 45 mm
84		171 602 337	1	Shaft

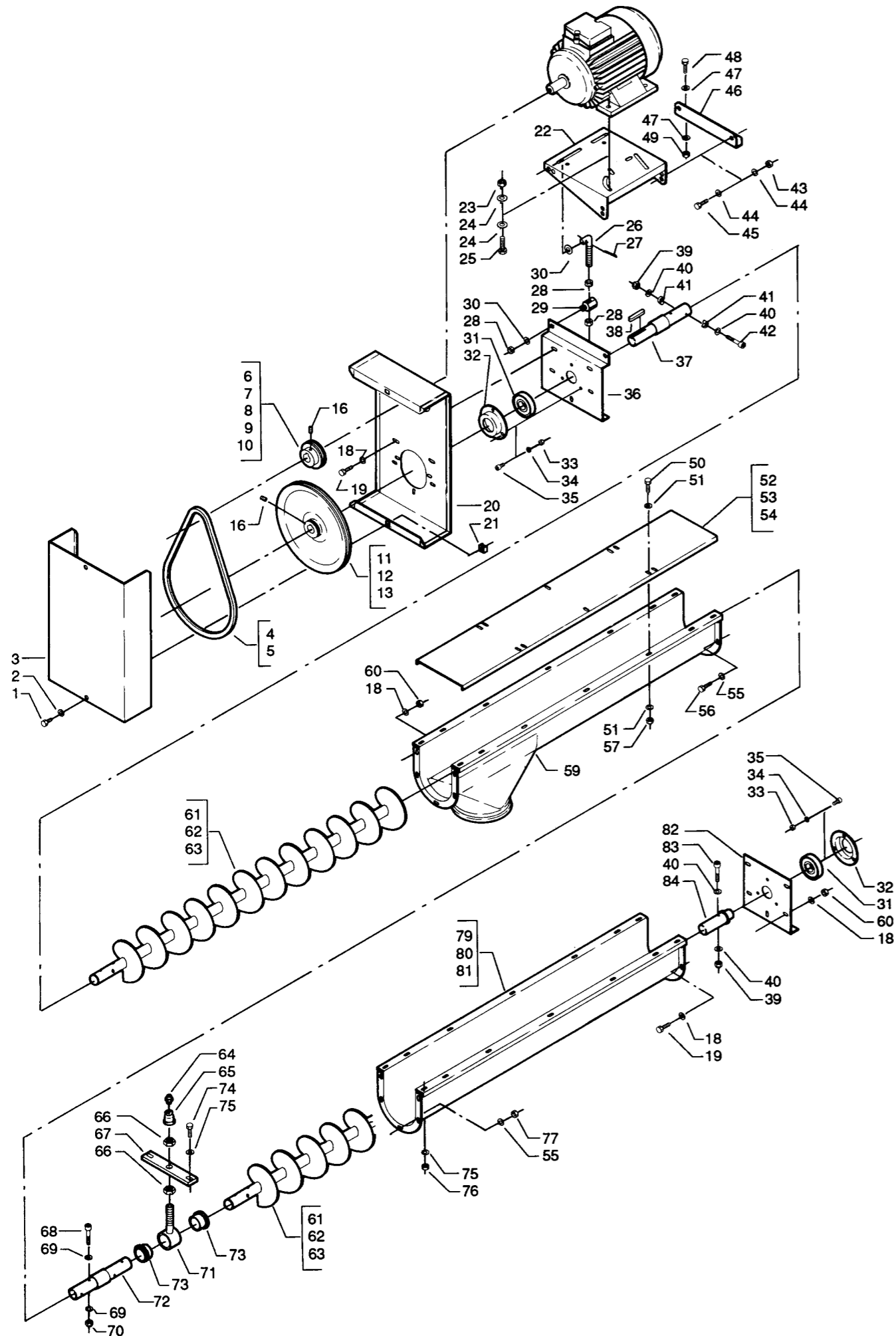


Fig.	Pack	Part no.	Pieces	Notes
1		100 306 014	2	Set screw st.8.8 M8 x 15 mm
2		100 331 005	2	Flat washer M8
3		171 604 338	1	Outside belt guard
4		100 403 043	2-3	V-belt A50
5		100 403 052	3-4	V-belt A52
6		170 030 052	1	V-belt pulley SPA 71 with 2 grooves, boring ø 24 mm
7		170 030 054	1	V-belt pulley SPA 71 with 2 grooves, boring ø 28 mm
8		170 030 060	1	V-belt pulley SPA 71 with 3 grooves, boring ø 28 mm
9		170 030 061	1	V-belt pulley SPA 71 with 3 grooves, boring ø 38 mm
10		170 030 062	1	V-belt pulley SPA 71 with 4 grooves, boring ø 38 mm
11		170 030 158	1	V-belt pulley SPA 315 with 2 grooves, boring ø 30mm
12		170 030 163	1	V-belt pulley SPA 315 with 3 grooves, boring ø 30 mm
13		170 030 168	1	V-belt pulley SPA 315 with 4 grooves, boring ø 30 mm
16		100 322 023	2	Stop screw M8 x 8 mm
18		100 331 005	20	Flat washer M8
19		100 306 015	10	Set screw st.8.8 M8 x 20 mm
20		171 604 337	1	Inside Belt guard
21		100 323 303	2	Clips nut M8
22		171 005 301	1	Motor mounting plate
23		100 315 013	4	Nut st.8.8 M10
24		100 331 006	8	Flat washer M10
25		100 306 030	4	Set screw st.8.8 M10 x 30 mm
26		170 022 101	2	Stretching screw M10
27		100 333 076	2	Split pin ø 3.2 x 25 mm
28		100 315 013	6	Nut st.8.8 M10
29		170 022 100	2	Stud bolt M10
30		100 331 006	4	Flat washer M10
31		100 401 064	2	Ball bearing # 6306-2RS1
32		171 005 303	2	Bearing cover
33		100 315 012	6	Nut st.8.8 M8
34		100 332 019	6	Star washer M8
35		100 309 005	6	Hex-socket cap screw M8 x 20 mm
36		171 604 339	1	End plate
37		171 604 351	1	Shaft
38		100 405 013	1	Key 8 x 7 x 50 mm
39		100 316 004	3	Lock nut M10
40		100 331 006	6	Flat washer M10
41		100 331 075	4	Dished washer M10
42		100 309 011	2	Hex-socket cap screw M10 x 70 mm
43		100 315 013	2	Nut st.8.8 M10
44		100 331 006	4	Flat washer M10
45		100 306 029	2	Set screw st.8.8 M10 x 25 mm
46		171 604 301	1	Bracket for motor mounting plate
47		100 331 006	4	Flat washer M10
48		100 306 029	2	Set screw st.8.8 M10 x 25 mm
49		100 315 013	2	Nut st.8.8 M10
50		100 308 029	6	Set screw st.8.8 M8 x 12 mm
51		100 331 005	12	Flat washer M8
52		171 621 316	1	Cover, 1 m
53		171 621 315	1	Cover, 1.5 m
54		171 621 314	1	Cover, 2 m
55		100 331 005	10	Flat washer M8
56		100 306 015	5	Set screw st.8.8 M8 x 20 mm
57		100 315 012	6	Nut st.8.8 M8
59		171 604 116	1	Trough with outlet, 2 m
60		100 315 012	10	Nut st.8.8 M8
61		171 604 346	1	Flight, 1 m
62		171 604 345	1	Flight, 1.5 m
63		171 604 344	1	Flight, 2 m
64		100 421 005	1	Grease nipple 1/4" WRG
65		100 316 072	1	Socket
66		100 316 070	2	Counter nut 1/2" WRG
67		171 604 315	1	Crossbar
68		100 309 010	4	Hex-socket cap screw M10 x 60 mm
69		100 331 006	8	Flat washer M10
70		100 316 004	4	Lock nut M10
71		171 604 354	1	Bearing housing
73		171 604 360	2	Nylon bearing Ø45xØ50x25 mm (set of 2 pcs.)
CPL		171 604 109	1	Fig. 71 + 72 + 73. Repair kit for intermidiete bearing
74		100 306 029	2	Set screw st.8.8 M10 x 25 mm
75		100 331 006	4	Flat washer M10
76		100 315 013	2	Nut st.8.8 M10
77		100 315 012	5	Nut st.8.8 M8
79		171 604 124	1	Trough without outlet, 1 m
80		171 604 123	1	Trough without outlet, 1.5 m
81		171 604 122	1	Trough without outlet, 2 m
82		171 604 314	1	End plate
83		100 309 010	1	Hex-socket cap screw M10 x 60 mm
84		171 604 355	1	Shaft

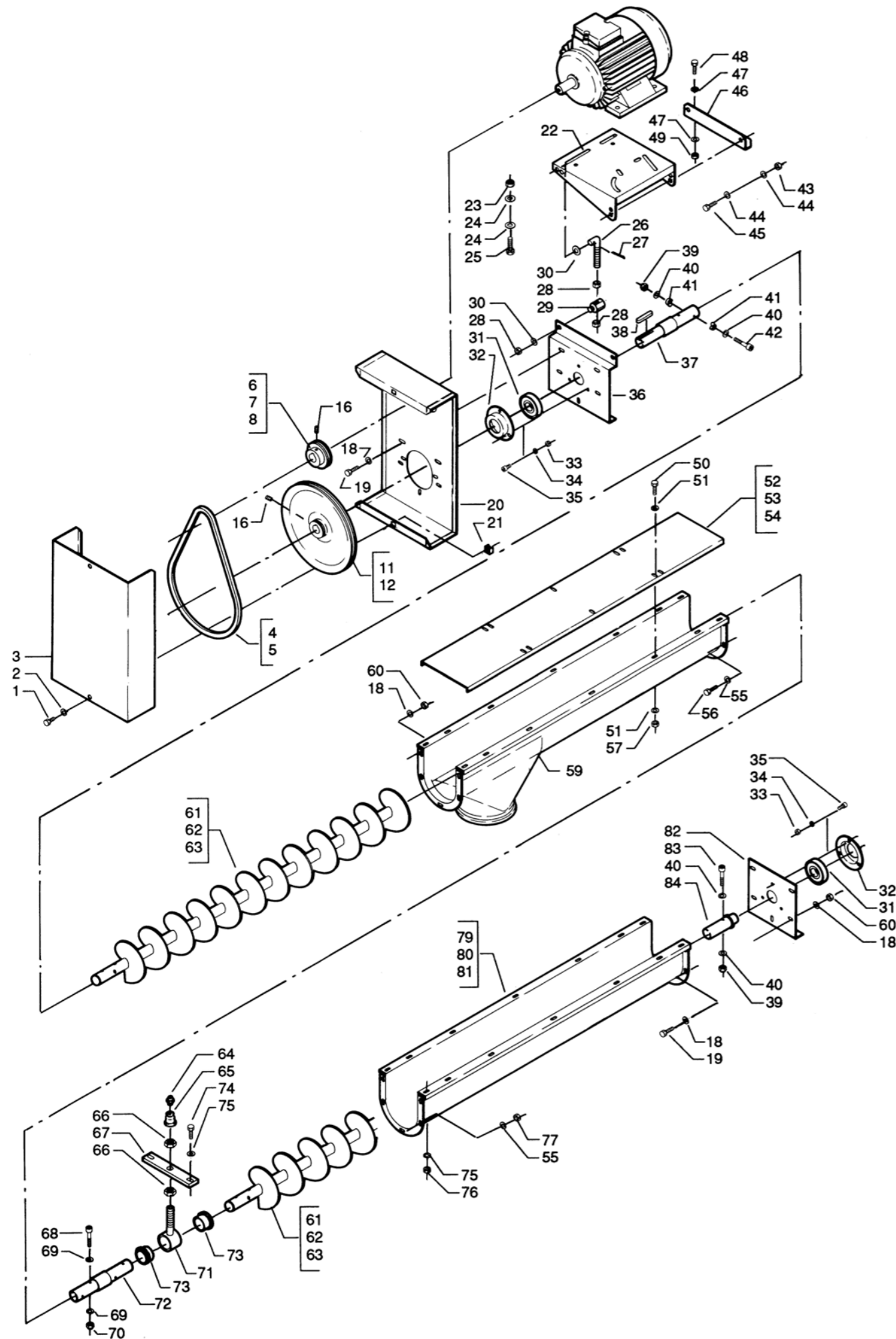


Fig.	Pack	Part no.	Pieces	Notes
1		100 306 014	5	Set screw st.8.8 M8 x 15 mm
2		100 331 005	5	Flat washer M8
3		171 605 305	1	Outside belt guard
4		100 403 116	3	V-belt A65
5		100 403 117	4	V-belt A67
6		170 030 098	1	V-belt pulley SPA 100 with 3 grooves, boring ø 28 mm
7		170 030 104	1	V-belt pulley SPA 100 with 4 grooves, boring ø 38 mm
8		170 030 105	1	V-belt pulley SPA 100 with 4 grooves, boring ø 42 mm
11		170 030 185	1	V-belt pulley SPA 450 with 3 grooves, boring ø 35mm
12		170 030 190	1	V-belt pulley SPA 450 with 4 grooves, boring ø 35 mm
16		100 322 023	2	Stop screw M8 x 8 mm
18		100 331 005	20	Flat washer M8
19		100 306 015	10	Set screw st.8.8 M8 x 20 mm
20		171 605 110	1	Inside belt guard
21		100 323 303	5	Clips nut M8
22		171 005 301	1	Motor mounting plate
23		100 315 013	4	Nut st.8.8 M10
24		100 331 006	8	Flat washer M10
25		100 306 030	4	Set screw st.8.8 M10 x 30 mm
26		170 022 101	2	Stretching screw M10
27		100 333 076	2	Split pin ø 3.2 x 25 mm
28		100 315 013	6	Nut st.8.8 M10
29		170 022 100	2	Stud bolt M10
30		100 331 006	4	Flat washer M10
31		100 401 065	2	Ball bearing # 6307-2RS1
32		171 605 315	2	Bearing cover
33		100 315 012	6	Nut st.8.8 M8
34		100 332 019	6	Star washer M8
35		100 309 006	6	Hex-socket cap screw M8 x 35 mm
36		171 605 313	1	End plate
37		171 605 407	1	Shaft
38		100 405 030	1	Key 10 x 8 x 55 mm
39		100 316 004	3	Lock nut M10
40		100 331 006	6	Flat washer M10
41		100 331 075	4	Dished washer M10
42		100 309 011	2	Hex-socket cap screw M10 x 70 mm
43		100 315 013	2	Nut st.8.8 M10
44		100 331 006	4	Flat washer M10
45		100 306 029	2	Set screw st.8.8 M10 x 25 mm
46		171 605 301	1	Bracket for motor mounting plate
47		100 331 006	4	Flat washer M10
48		100 306 029	2	Set screw st.8.8 M10 x 25 mm
49		100 315 013	2	Nut st.8.8 M10
50		100 308 029	6	Set screw st.8.8 M8 x 12 mm
51		100 331 005	12	Flat washer M8
52		171 621 320	1	Cover, 1 m
53		171 621 319	1	Cover, 1.5 m
54		171 621 318	1	Cover, 2 m
55		100 331 005	10	Flat washer M8
56		100 306 015	5	Set screw st.8.8 M8 x 20 mm
57		100 315 012	6	Nut st.8.8 M8
59		171 605 116	1	Trough with outlet, 2 m
60		100 315 012	10	Nut st.8.8 M8
61		171 605 338	1	Flight, 1 m
62		171 605 337	1	Flight, 1.5 m
63		171 605 336	1	Flight, 2 m
64		100 421 005	1	Grease nipple 1/4" WRG
65		100 316 072	1	Socket
66		100 316 070	2	Counter nut 1/2" WRG
67		171 605 316	1	Crossbar
68		100 309 010	4	Hex-socket cap screw M10 x 60 mm
69		100 331 006	8	Flat washer M10
70		100 316 004	4	Lock nut M10
71		171 605 340	1	Bearing housing
73		171 605 411	2	Nylon Bearing Ø45xØ50x30 mm (set of 2 pcs.)
CPL		171 605 109	1	Fig. 71 + 72 + 73. Repair kit for intermediate bearing
74		100 306 029	2	Set screw st.8.8 M10 x 25 mm
75		100 331 006	4	Flat washer M10
76		100 315 013	2	Nut st.8.8 M10
77		100 315 012	5	Nut st.8.8 M8
79		171 605 124	1	Trough without outlet, 1 m
80		171 605 123	1	Trough without outlet, 1.5 m
81		171 605 122	1	Trough without outlet, 2 m
82		171 605 314	1	End plate
83		100 309 010	1	Hex-socket cap screw M10 x 60 mm
84		171 605 341	1	Shaft

Kongskilde Industries A/S

Skælskørvej 64

DK - 4180 Sorø

Tel. +45 72 17 60 00

mail@kongskilde-industries.com

www.kongskilde-industries.com