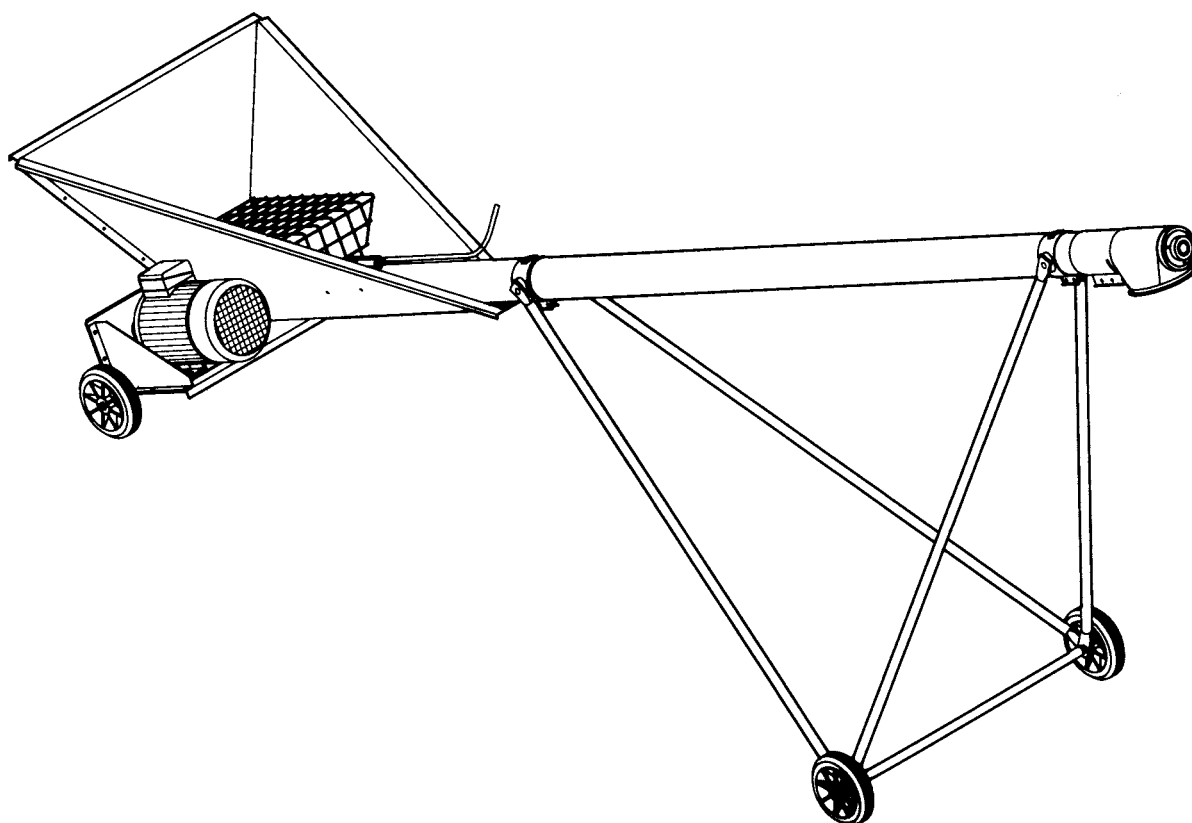
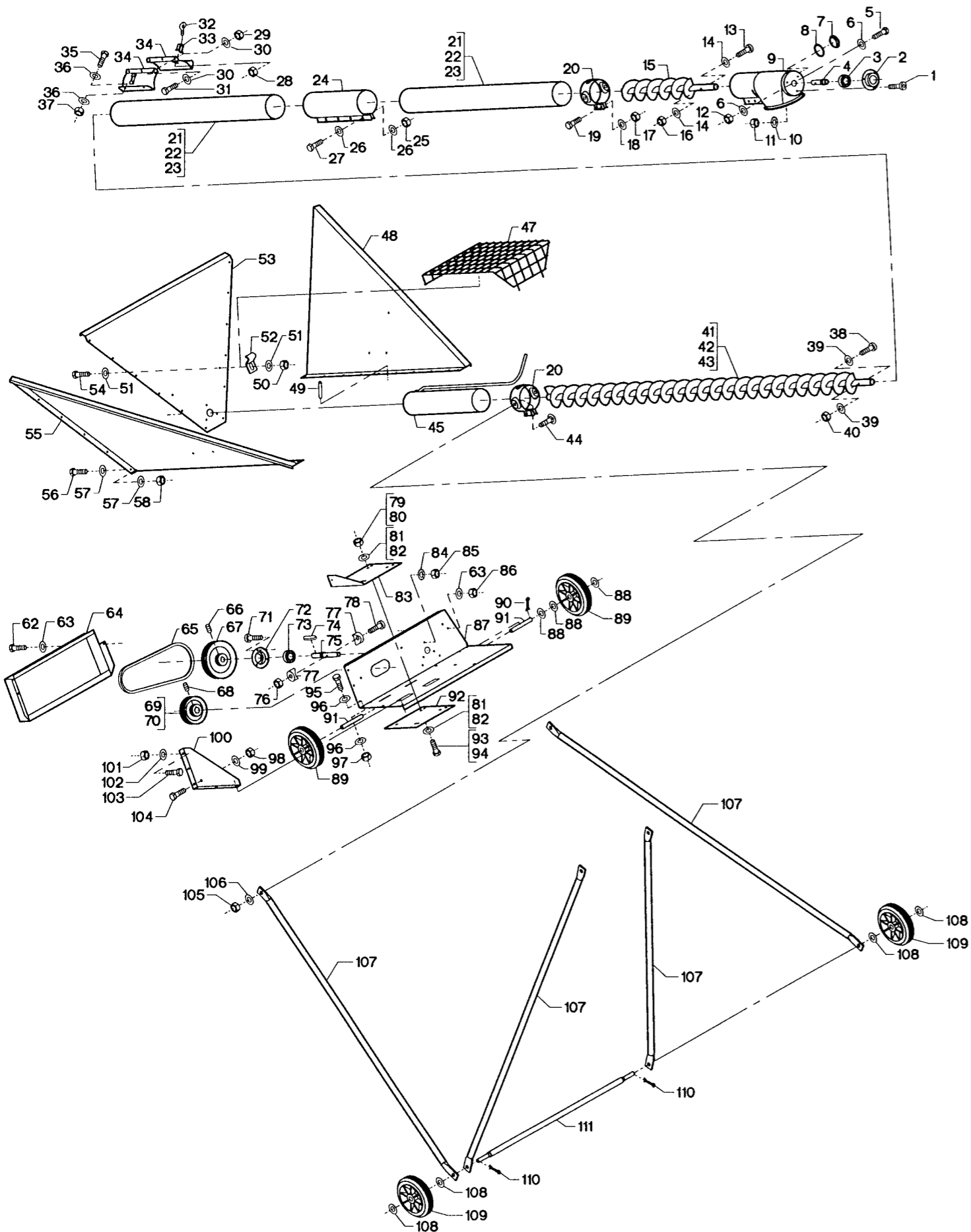


# DGC 102

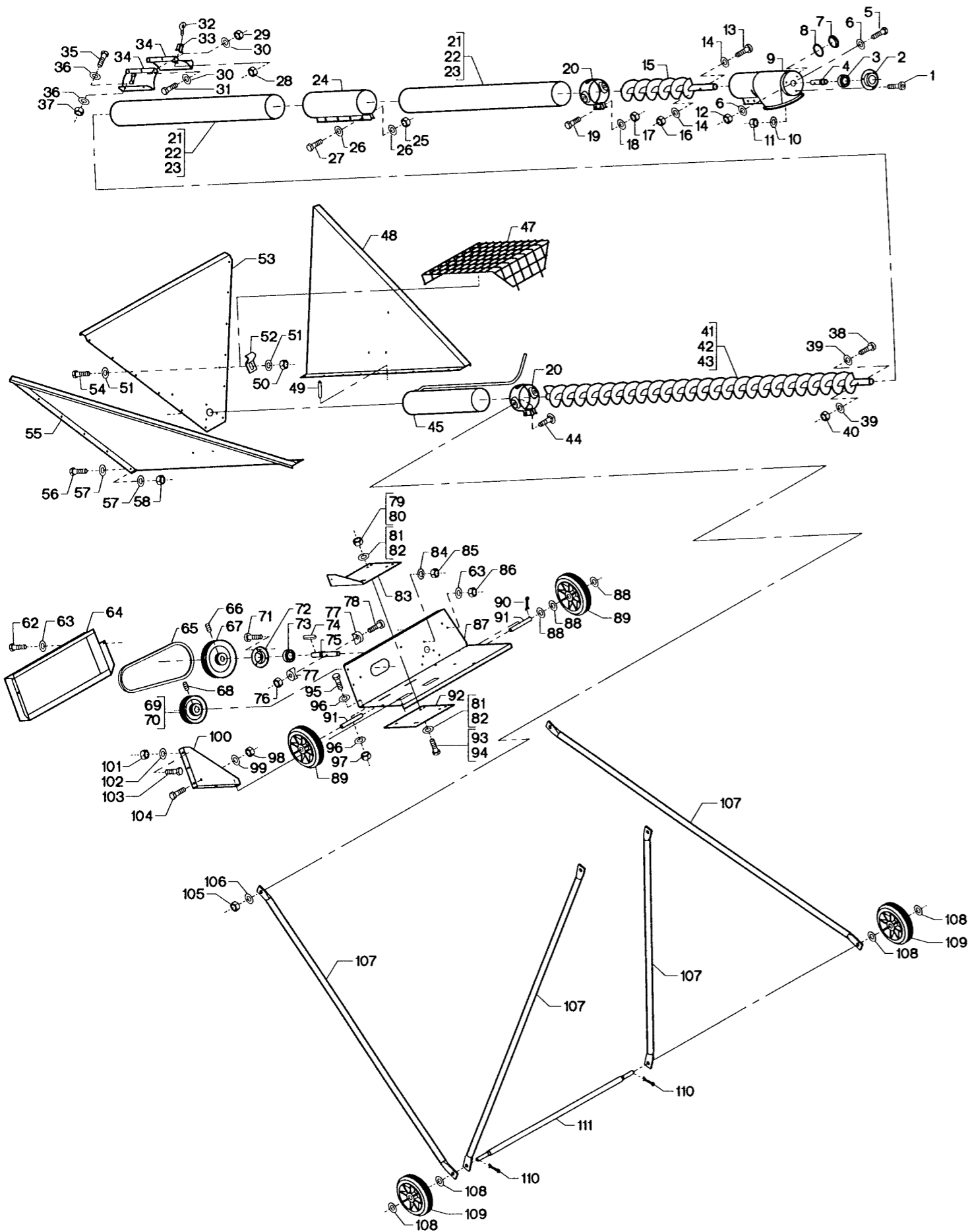
## Grain auger



Spare parts list



| Fig. | Part no.    | Pieces | Notes   |
|------|-------------|--------|---|
| 1    | 100 309 000 | 3      | Hex-socket cap screw M6 x 16 mm                     |
| 2    | 171 001 303 | 1      |   |
| 3    | 100 401 006 | 1      | Ball bearing # 6304 - 2RS                           |
| 4    | 171 021 433 | 1      |   |
| 5    | 100 306 017 | 3      | Set screw M8 x 30 mm                                |
| 6    | 100 331 005 | 6      | Flat washer M8                                      |
| 7    | 100 414 045 | 1      |   |
| 8    | 100 413 141 | 1      | O-ring ø40.2 x 3.0 mm                               |
| 9    | 171 401 105 | 1      |   |
| 10   | 100 332 018 | 3      | Star washer M6                                      |
| 11   | 100 315 028 | 3      | Nut M6  |
| 12   | 100 315 012 | 3      | Nut M8  |
| 13   | 100 309 003 | 2      | Hex-socket cap screw M6 x 35 mm                     |
| 14   | 100 331 004 | 4      | Flat washer M6                                      |
| 15   | 171 410 107 | 1      | Flight  |
| 16   | 100 316 002 | 2      | Lock nut M6   |
| 17   | 100 315 012 | 4      | Nut M8  |
| 18   | 100 331 005 | 4      | Flat washer M8                                      |
| 19   | 100 306 017 | 4      | Set screw M8 x 30 mm                                |
| 20   | 171 021 395 | 2      |   |
| 21   | 171 002 311 |        | 1 m pipe  |
| 22   | 171 002 312 |        | 2 m pipe  |
| 23   | 171 002 313 |        | 3 m pipe  |
| 24   | 171 002 360 |        |   |
| 25   | 100 315 012 | 4      | Nut M8  |
| 26   | 100 331 005 | 8      | Flat washer M8                                      |
| 27   | 100 308 034 | 4      | Set screw M8 x 45 mm                                |
| 28   | 100 315 012 | 1      | Nut M8  |
| 29   | 100 316 002 | 3      | Lock nut M6   |
| 30   | 100 331 004 | 6      | Flat washer M6                                      |
| 31   | 100 308 025 | 3      | Set screw M6 x 25 mm                                |
| 32   | 100 323 301 | 1      | Ring bolt M8 x 30 mm                                |
| 33   | 171 002 349 | 1      |   |
| 34   | 171 410 315 | 2      |   |
| 35   | 100 323 041 | 4      | Set screw M6 x 15 mm                                |
| 36   | 100 331 004 | 8      | Flat washer M6                                      |
| 37   | 100 315 028 | 4      | Nut M6  |
| 38   | 100 309 002 | 2      | Hex-socket cap screw M6 x 35 mm                     |
| 39   | 100 331 004 | 4      | Flat washer M6                                      |
| 40   | 100 316 002 | 2      | Lock nut M6   |
| 41   | 171 002 156 |        | 1 m flight  |
| 42   | 171 002 158 |        | 2 m flight  |
| 43   | 171 002 160 |        | 3 m flight  |
| 44   | 100 311 035 | 4      | Coach bolt M12 x 35 mm                              |
| 45   | 171 410 104 | 1      |   |
| 47   | 171 410 310 | 1      |   |
| 48   | 171 410 325 | 1      |   |
| 49   | 100 333 082 | 1      | Slotted spring pin ø5 x 24 mm                       |
| 50   | 100 316 002 | 4      | Lock nut M6   |
| 51   | 100 331 004 | 8      | Flat washer M6                                      |
| 52   | 171 021 378 | 4      |   |
| 53   | 171 410 324 | 1      |   |
| 54   | 100 323 041 | 4      | Set screw M6 x 15 mm                                |
| 55   | 171 410 326 | 1      |   |
| 56   | 100 323 041 | 22     | Set screw M6 x 15 mm                                |
| 57   | 100 331 004 | 44     | Flat washer M6                                      |
| 58   | 100 315 028 | 22     | Nut M6  |
| 62   | 100 323 041 | 2      | Set screw M6 x 15 mm                                |
| 63   | 100 331 004 | 4      | Flat washer M6                                      |
| 64   | 171 410 322 | 1      |   |
| 65   | 100 403 104 | 2      | V-belt SPZ 875REX                                   |
| 66   | 100 322 023 | 1      | Stop screw M8 x 8 mm                                |
| 67   | 170 030 320 | 1      | V-belt pulley SPZ 140 with 2 grooves                |
| 68   | 100 322 023 | 1      | Stop screw M8 x 8 mm                                |
| 69   | 170 030 251 | 1      | V-belt pulley SPZ 100 with 2 grooves, boring ø24 mm |
| 70   | 170 030 252 | 1      | V-belt pulley SPZ 100 with 2 grooves, boring ø28 mm |
| 71   | 100 309 000 | 3      | Hex-socket cap screw M6 x 16 mm                     |
| 72   | 171 001 303 | 1      |   |
| 73   | 100 401 006 | 1      | Ball bearing # 6304 - 2RS                           |
| 74   | 100 405 028 | 1      | Key 6 x 6 x 45 mm                                   |
| 75   | 171 410 327 | 1      |   |
| 76   | 100 316 002 | 2      | Lock nut M6   |
| 77   | 100 331 073 | 4      | Dished washer M6                                    |
| 78   | 100 309 003 | 2      | Hex-socket cap screw M6 x 40 mm                     |
| 79   | 100 315 012 | 4      | Nut M8 (-1.5 kW)                                    |



| Fig. | Part no.    | Pieces | Notes                               |
|------|-------------|--------|-------------------------------------|
| 80   | 100 315 013 | 4      | Nut M10 (2.2 kW-)                   |
| 81   | 100 331 005 | 8      | Flat washer M8 (-1.5 kW)            |
| 82   | 100 331 006 | 8      | Flat washer M10 (2.2 kW-)           |
| 83   | 171 410 318 | 1      |                                     |
| 84   | 100 332 018 | 3      | Star washer M6                      |
| 85   | 100 315 028 | 3      | Nut M6                              |
| 86   | 100 315 028 | 2      | Nut M6                              |
| 87   | 171 410 323 | 1      |                                     |
| 88   | 100 331 008 | 6      | Flat washer M16                     |
| 89   | 171 021 415 | 2      | Wheel PLP 150 x 38/15               |
| 90   | 100 333 076 | 2      | Split pin $\varnothing$ 3.2 x 25 mm |
| 91   | 171 401 324 | 2      |                                     |
| 92   | 171 410 320 | 1      |                                     |
| 93   | 100 308 032 | 4      | Set screw M8 x 35 mm (-1.5 kW)      |
| 94   | 100 306 031 | 4      | Set screw M10 x 35 mm (2.2 kW-)     |
| 95   | 100 308 026 | 4      | Set screw M6 x 30 mm                |
| 96   | 100 331 004 | 8      | Flat washer M6                      |
| 97   | 100 315 028 | 4      | Nut M6                              |
| 98   | 100 316 004 | 1      | Lock nut M 10                       |
| 99   | 100 331 006 | 1      | Flat washer M10                     |
| 100  | 171 410 321 | 1      |                                     |
| 101  | 100 315 012 | 5      | Nut M8                              |
| 102  | 100 331 005 | 5      | Flat washer M8                      |
| 103  | 100 306 014 | 5      | Set screw M8 x 15 mm                |
| 104  | 100 308 039 | 1      | Set screw M10 x 55 mm               |
| 105  | 100 315 016 | 4      | Nut M12                             |
| 106  | 100 331 007 | 4      | Flat washer M12                     |
| 107  | 171 021 327 | 4      |                                     |
| 108  | 100 331 008 | 4      | Flat washer M16                     |
| 109  | 171 021 415 | 2      | Wheel PLP 150 x 38/15               |
| 110  | 100 333 076 | 2      | Split pin $\varnothing$ 3.2 x 25 mm |
| 111  | 171 021 111 | 1      |                                     |



**Kongskilde Industries A/S**  
Skælskørvej 64  
DK - 4180 Sorø  
Tel. +45 72 17 60 00  
[mail@kongskilde-industries.com](mailto:mail@kongskilde-industries.com)  
[www.kongskilde-industries.com](http://www.kongskilde-industries.com)