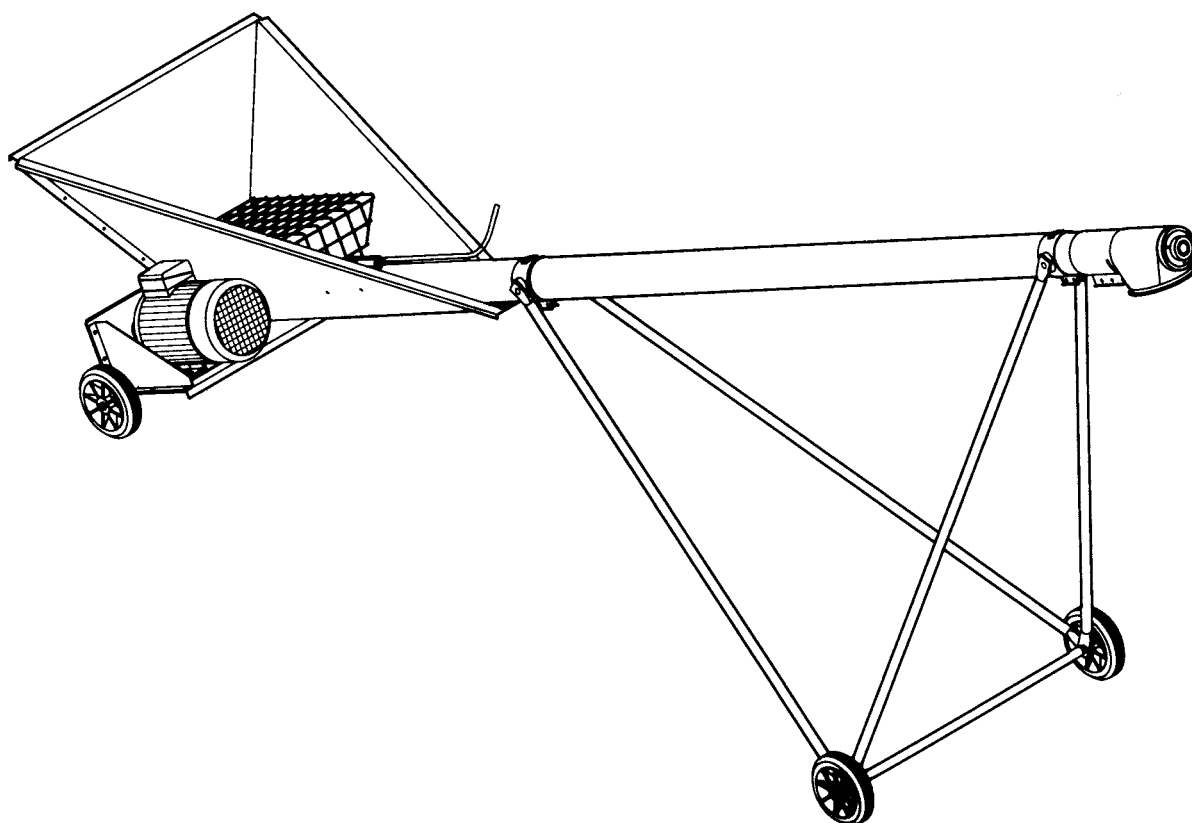


DGC 102

Grain auger



Spare parts list

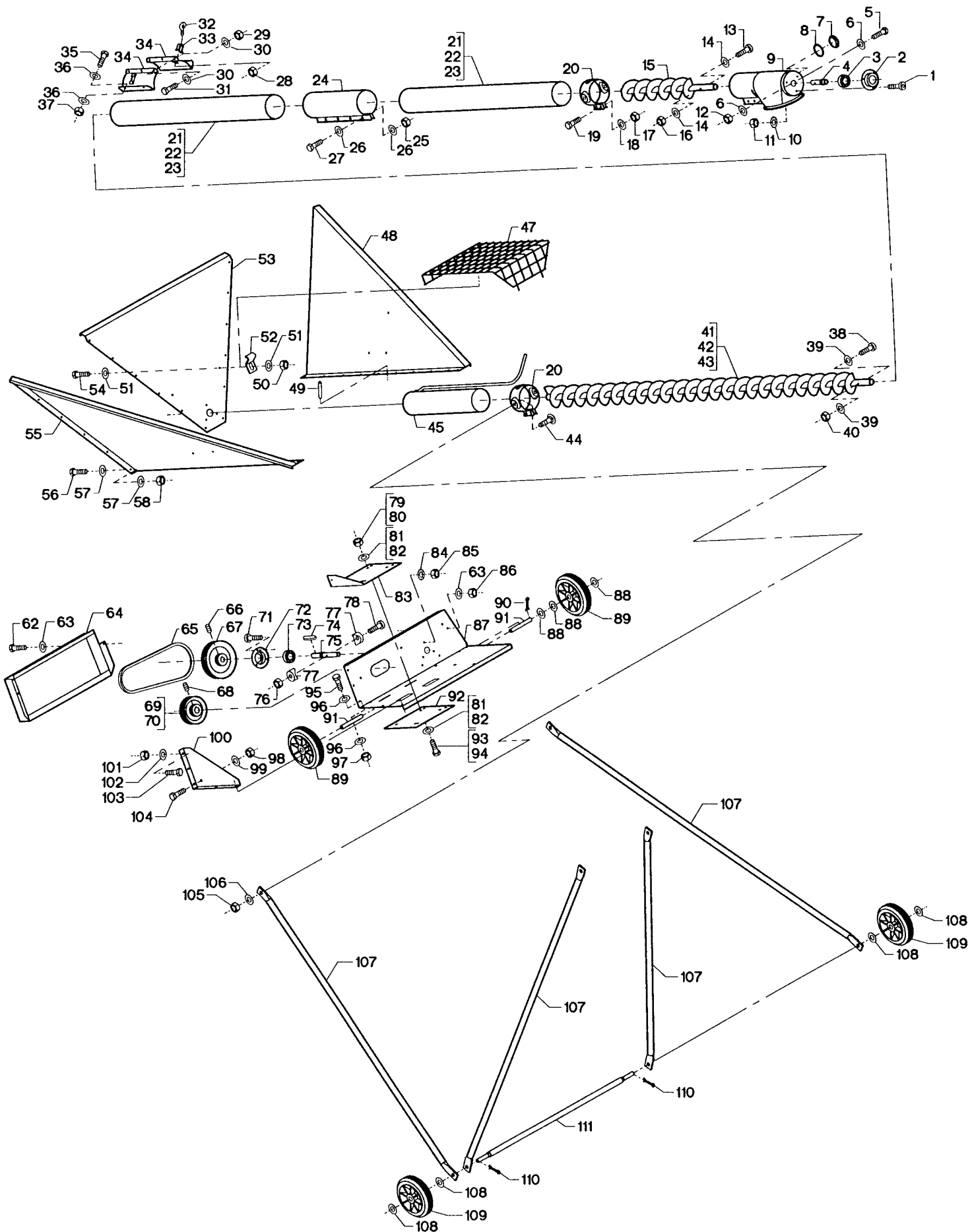


Fig.	Part no.	Pieces	Notes
1	100 309 000	3	Hex-socket cap screw M6 x 16 mm
2	171 001 303	1	
3	100 401 006	1	Ball bearing # 6304 - 2RS
4	171 021 433	1	
5	100 306 017	3	Set screw M8 x 30 mm
6	100 331 005	6	Flat washer M8
7	100 414 045	1	
8	100 413 141	1	O-ring ø40.2 x 3.0 mm
9	171 401 105	1	
10	100 332 018	3	Star washer M6
11	100 315 028	3	Nut M6
12	100 315 012	3	Nut M8
13	100 309 003	2	Hex-socket cap screw M6 x 35 mm
14	100 331 004	4	Flat washer M6
15	171 410 107	1	Flight
16	100 316 002	2	Lock nut M6
17	100 315 012	4	Nut M8
18	100 331 005	4	Flat washer M8
19	100 306 017	4	Set screw M8 x 30 mm
20	171 021 395	2	
21	171 002 311		1 m pipe
22	171 002 312		2 m pipe
23	171 002 313		3 m pipe
24	171 002 360		
25	100 315 012	4	Nut M8
26	100 331 005	8	Flat washer M8
27	100 308 034	4	Set screw M8 x 45 mm
28	100 315 012	1	Nut M8
29	100 316 002	3	Lock nut M6
30	100 331 004	6	Flat washer M6
31	100 308 025	3	Set screw M6 x 25 mm
32	100 323 301	1	Ring bolt M8 x 30 mm
33	171 002 349	1	
34	171 410 315	2	
35	100 323 041	4	Set screw M6 x 15 mm
36	100 331 004	8	Flat washer M6
37	100 315 028	4	Nut M6
38	100 309 002	2	Hex-socket cap screw M6 x 35 mm
39	100 331 004	4	Flat washer M6
40	100 316 002	2	Lock nut M6
41	171 002 156		1 m flight
42	171 002 158		2 m flight
43	171 002 160		3 m flight
44	100 311 035	4	Coach bolt M12 x 35 mm
45	171 410 104	1	
47	171 410 310	1	
48	171 410 325	1	
49	100 333 082	1	Slotted spring pin ø5 x 24 mm
50	100 316 002	4	Lock nut M6
51	100 331 004	8	Flat washer M6
52	171 021 378	4	
53	171 410 324	1	
54	100 323 041	4	Set screw M6 x 15 mm
55	171 410 326	1	
56	100 323 041	22	Set screw M6 x 15 mm
57	100 331 004	44	Flat washer M6
58	100 315 028	22	Nut M6
62	100 323 041	2	Set screw M6 x 15 mm
63	100 331 004	4	Flat washer M6
64	171 410 322	1	
65	100 403 104	2	V-belt SPZ 875REX
66	100 322 023	1	Stop screw M8 x 8 mm
67	170 030 320	1	V-belt pulley SPZ 140 with 2 grooves
68	100 322 023	1	Stop screw M8 x 8 mm
69	170 030 251	1	V-belt pulley SPZ 100 with 2 grooves, boring ø24 mm
70	170 030 252	1	V-belt pulley SPZ 100 with 2 grooves, boring ø28 mm
71	100 309 000	3	Hex-socket cap screw M6 x 16 mm
72	171 001 303	1	
73	100 401 006	1	Ball bearing # 6304 - 2RS
74	100 405 028	1	Key 6 x 6 x 45 mm
75	171 410 327	1	
76	100 316 002	2	Lock nut M6
77	100 331 073	4	Dished washer M6
78	100 309 003	2	Hex-socket cap screw M6 x 40 mm
79	100 315 012	4	Nut M8 (-1.5 kW)

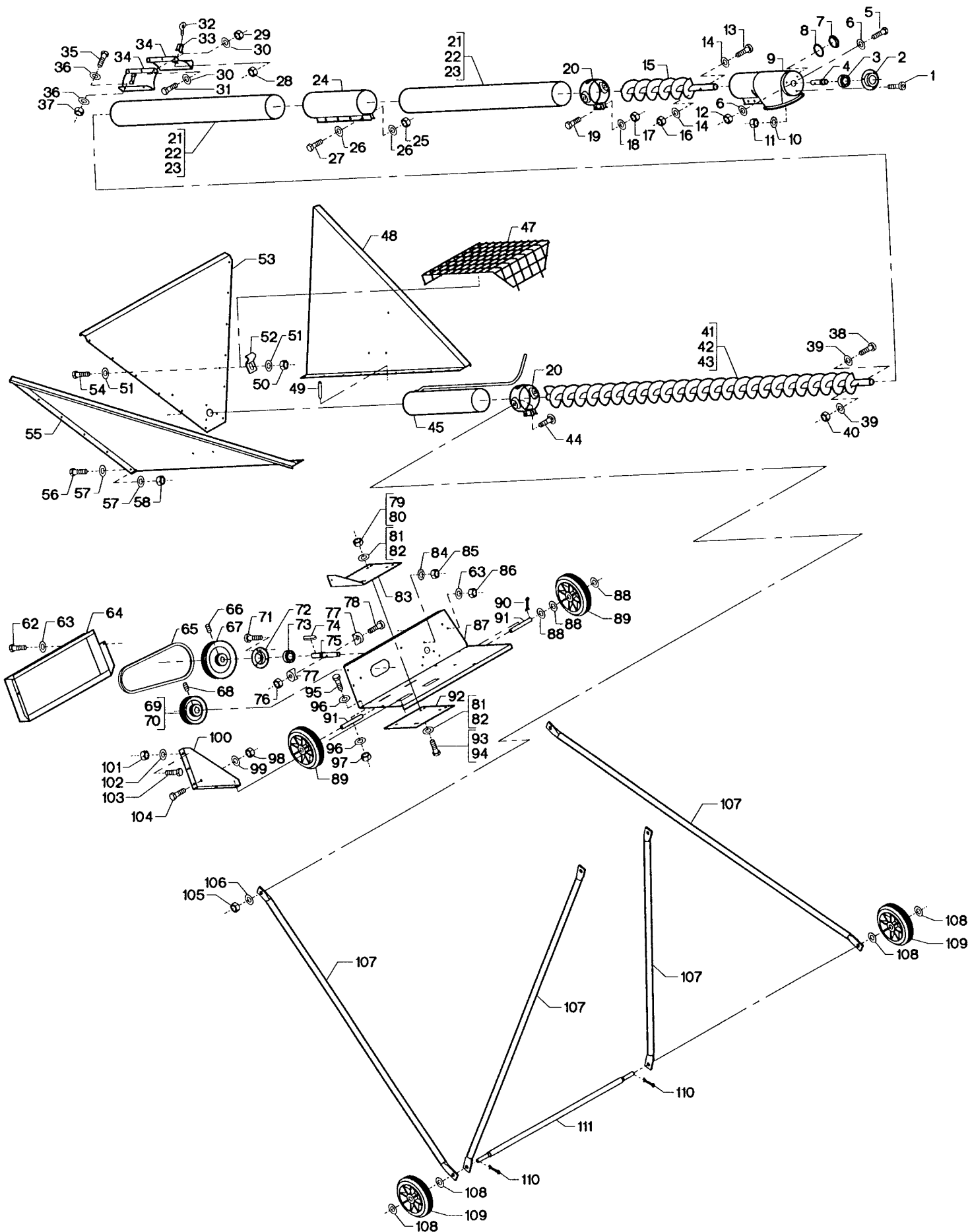


Fig.	Part no.	Pieces	Notes
80	100 315 013	4	Nut M10 (2.2 kW-)
81	100 331 005	8	Flat washer M8 (-1.5 kW)
82	100 331 006	8	Flat washer M10 (2.2 kW-)
83	171 410 318	1	
84	100 332 018	3	Star washer M6
85	100 315 028	3	Nut M6
86	100 315 028	2	Nut M6
87	171 410 323	1	
88	100 331 008	6	Flat washer M16
89	171 021 415	2	Wheel PLP 150 x 38/15
90	100 333 076	2	Split pin \varnothing 3.2 x 25 mm
91	171 401 324	2	
92	171 410 320	1	
93	100 308 032	4	Set screw M8 x 35 mm (-1.5 kW)
94	100 306 031	4	Set screw M10 x 35 mm (2.2 kW-)
95	100 308 026	4	Set screw M6 x 30 mm
96	100 331 004	8	Flat washer M6
97	100 315 028	4	Nut M6
98	100 316 004	1	Lock nut M 10
99	100 331 006	1	Flat washer M10
100	171 410 321	1	
101	100 315 012	5	Nut M8
102	100 331 005	5	Flat washer M8
103	100 306 014	5	Set screw M8 x 15 mm
104	100 308 039	1	Set screw M10 x 55 mm
105	100 315 016	4	Nut M12
106	100 331 007	4	Flat washer M12
107	171 021 327	4	
108	100 331 008	4	Flat washer M16
109	171 021 415	2	Wheel PLP 150 x 38/15
110	100 333 076	2	Split pin \varnothing 3.2 x 25 mm
111	171 021 111	1	

Kongskilde Industries A/S

Skælskørvej 64

DK - 4180 Sorø

Tel. +45 72 17 60 00

mail@kongskilde-industries.com

www.kongskilde-industries.com