

# KDC 5000

## Dual Screen Grain Cleaner

### Efficient Screen-Based Separation for Cleaner, Higher-Value Grain

#### Why Clean Grain Matters

Clean grain plays a critical role in maintaining crop quality and maximizing profitability. Removing impurities such as weed seeds, broken kernels, dust, and sand, helps farmers reduce the risk of toxins, improve storage stability, and increase the overall market value of their harvest. Clean grain also contributes to better processing efficiency and supports compliance with quality standards across the supply chain.

#### The KDC 5000

The KDC 5000 is the newest addition to the renowned KDC grain cleaner line, built on the trusted foundation of the KDC 4000 PLUS. The KDC 5000 is a dual screen drum cleaner, without the integrated aspirator found in the KDC PLUS models. It delivers the same reliable performance in a simplified design, ideal for grain producers looking for straightforward mechanical cleaning based on size.

#### Robust Dual-Screen Technology

At its core, the KDC 5000 uses Kongskilde's proven dual-screen drum system:

- The inner screen scalps oversized impurities such as husks and large debris.
- The outer screen filters out smaller particles and fines, ensuring clean, high-quality grain.

Our wide variety of existing screen options from the KDC 4000 PLUS are fully compatible with the KDC 5000, providing flexibility across different crops and regional requirements.

#### Accessories

- Optional bottom auger kit.
- Wide assortment of standard screens for all common crops.
- Outer screen cleaning brush kit.
- Rain cover for motors and gear boxes.
- Wheel set for short distance transport.

#### Benefits

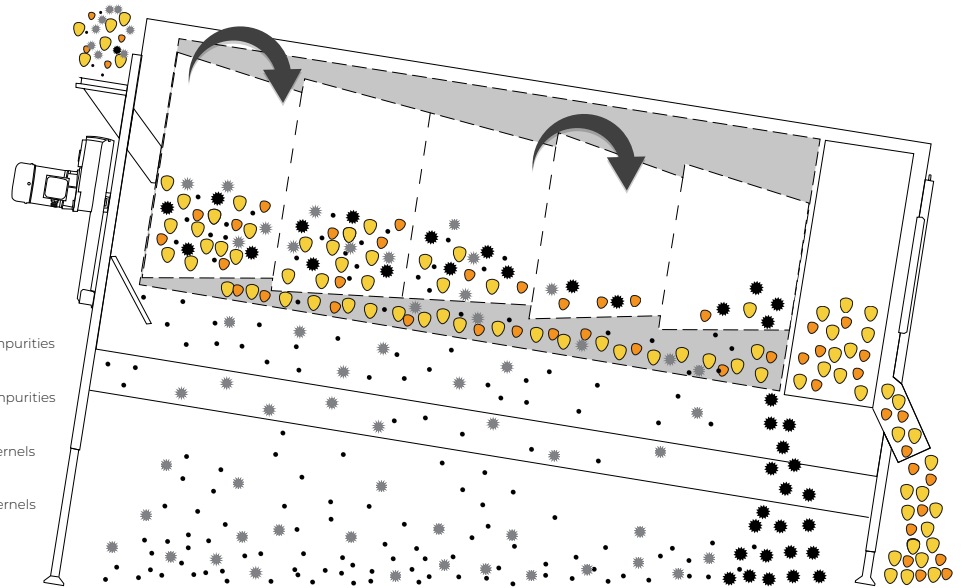
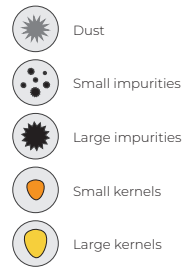
- **Two-layer size separation** – Two layers of screens sort grain by size for maximum cleanliness.
- **Screen options for all crops** – Choose from a wide range of sizes for wheat, corn, barley, soybeans, and more.
- **Quick-release screen system** – Fast screen changes with no special tools required.
- **Hinged access doors** – Full access to both screens from either side for easy inspection and maintenance.
- **Weather-resistant design** – Galvanized steel body and stainless-steel wear areas for outdoor use.
- **Optional bottom auger** – Add for controlled discharge and easy transport of debris away from the machine.
- **Optional aspirator compatibility** – Easily integrate with Kongskilde KF and FRL aspirators to enhance cleaning performance and adapt to future needs.



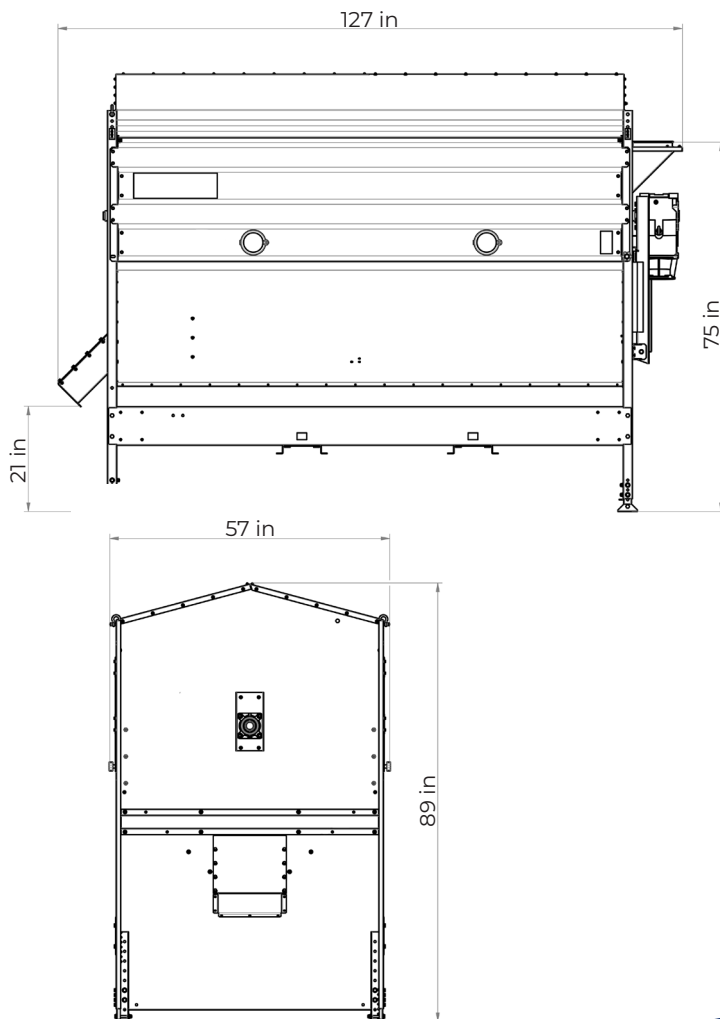
LEARN MORE

## How it works

The KDC 5000 is a dual-screen drum cleaner that efficiently sorts grain by size. The inner screen serves as a scalper to remove large particles, while the full outer screen area removes smaller fines to ensure clean, high-quality grain.



## Dimensions



| Technical specifications                                   | KDC 5000                         |
|--|----------------------------------|
| Max. capacity pre-cleaning. t/h*                           | 50                               |
| App. capacity seed cleaning. t/h*                          | 3 - 17                           |
| App. capacity malting barley. t/h*                         | 3 - 17                           |
| Screen drum drive motor size kW (HP)                       | 1.5 (3.0)                        |
| Screen drum RPM  | 21.9                             |
| Inlet for crop   | OK 200 (8")                      |
| Outlet for cleaned crop                                    | 71 in <sup>2</sup> / OK 200 (8") |
| Outlet for impurities, no bottom auger                     | 102.5 x 5.3 in                   |
| Conveying pipes for impurities                             | N/A                              |
| Screen area. Inner drum. m <sup>2</sup> (ft <sup>2</sup> ) | 44.1 (4.1)                       |
| Screen area. Outer drum. m <sup>2</sup> (ft <sup>2</sup> ) | 70.0 (6.5)                       |
| Weight. machine without screens. lbs (kg)                  | 1764 (800)                       |
| Built-in Aspirator   | No                               |
| <b>Optional Equipment</b>                                  |                                  |
| Pipe outlet from auger                                     | OK 160 (6")                      |
| Auger drive motor size. kW (HP)                            | 0.75 (1.5)                       |
| Auger drive motor RPM                                      | 3450                             |
| Auger drive RPM  | 450                              |

\* Grain 700 kg/m<sup>3</sup>. Capacity affected by grain type and condition, moisture, impurities, angling of KDC, selection of screens

**Kongskilde Industries USA, Inc.**  
 1802 Industrial Park Drive, Unit A  
 Normal, IL 61761  
 Tel.: (309) 452-3300  
[kna@kongskilde-industries.com](mailto:kna@kongskilde-industries.com)

