

Lateral Ducts

Data sheet

KMG 900 - KM 1600 - KM 2500 - KR 300

Kongskilde offers a wide range of lateral ducts and other products for on-floor drying and storage of grain and seeds.

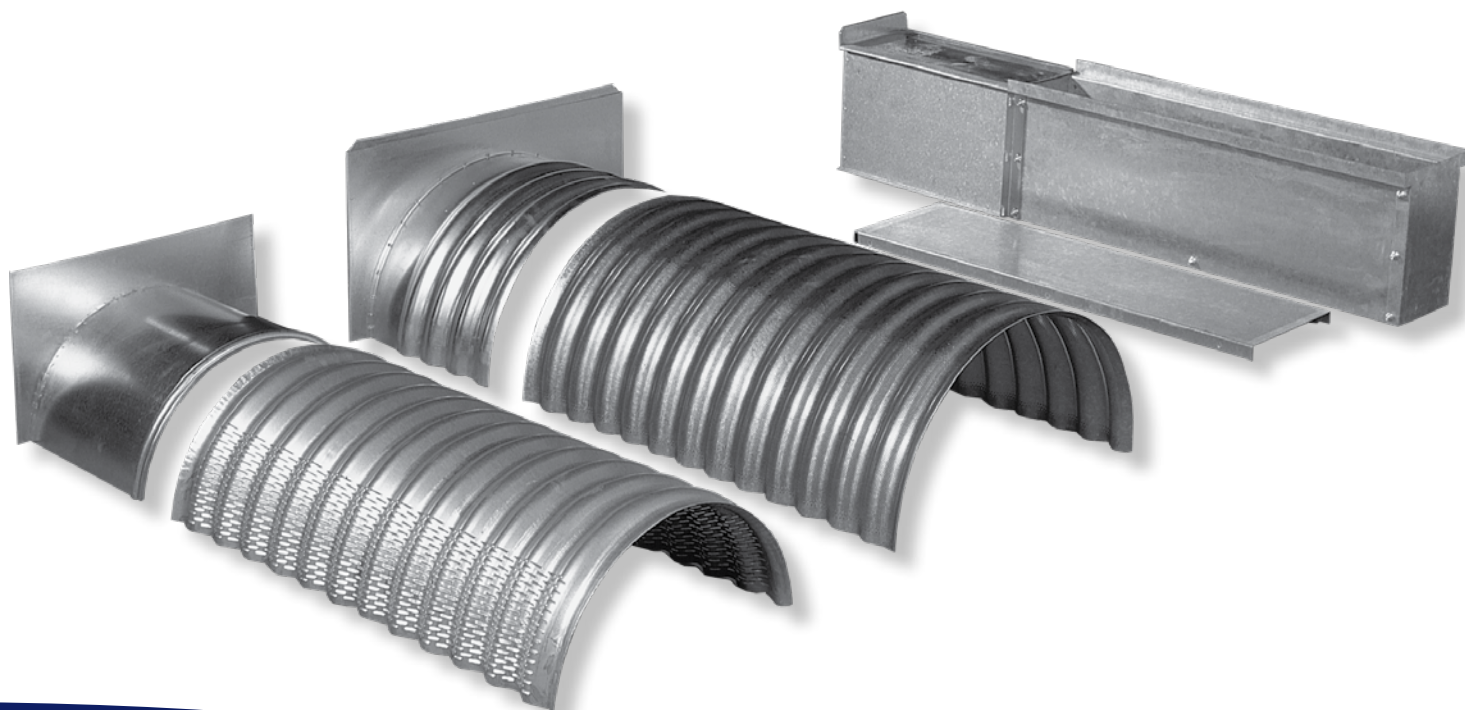
The Kongskilde KMG and KM lateral ducts can be combined for any drying and aeration application. The systems include different gates with slides, transitions, and endplates. This makes it easy to construct a lateral ducting system that can be connected to both the main channel and the floor.

The different sizes of ducts ensure an optimum air rate and thereby an even distribution of air throughout the system.

The ducting elements are easy to set up and remove allowing for use of the building for other purposes as well.

The lateral ducts can withstand a grain load of up to 10 metres height. Longer laterals can be made in a tapered design, e.g. with KM 1600 first, followed by KMG 900. Such a combination of components will assure a low air speed and is an economically viable investment.

The Kongskilde KR perforated drive-over sections are typically used in connection with on-floor storage systems for seeds and grain, where it is preferable to have a levelled floor. The perforated drive-over sections make handling easy as it is possible to enter and tip the seed directly onto the drying floor and subsequently reload the seed from the floor to the wagon with a front loader.





Technical Data

The KMG and KM semicircular lateral ducts are manufactured in galvanised sheet metal in a corrugated shape, providing the lateral ducts with high compression strength and ensuring secure connections between the elements.

The KMG 900 has louvres on the sides. The louvres ensure a very low air entry resistance into the crop, as they are not covered up by grain. The downward directed air stream also ensures an optimum distribution of the air in the crop between the channels.

Ideal for all crops including small seeds like rape seed.

Kongskilde recommends an air speed of 7-9 m/s in the lateral ducts to ensure an even distribution of air in the system.

The Kongskilde KR 300 perforated drive-over section is manufactured in modules of galvanised sheet metal with a very strong grill-shaped reinforcement placed on the underside. To secure the connection of the different elements they are made with overlapping plates.

In order to ease the construction work the KR 300 perforated drive-over sections can be delivered as a

complete system including gates with slides, in-floor duct casings, and endplates.

Data on lateral ducts	KMG 900	KM 1600	KM 2500
Cross-sectional area	900 cm ²	1600 cm ²	2500 cm ²
Width, exterior	480 mm	640 mm	800 mm
Height, exterior	240 mm	320 mm	400 mm
Physical length	900 mm	915 mm	915 mm
Effective length	850 mm	860 mm	860 mm
Perforation	1.3 mm louvre	2.0 mm	2.0 mm
Position perforation	both sides	both sides	full
Sheet metal thickness	0.75 mm	1.0 mm	1.25 mm

Data on perforated drive-over section	KR 300
Width, exterior	300 mm
Physical length	1,010 mm
Effective length	1,000 mm
Height	35 mm
Perforation	2.0 mm
Perforated area	28%
Sheet metal thickness	2.0 mm
KMax. allowable wheel load	6.0 t

Subject to be changed without notice. 121001509/CC/CB/KMG/KM/KR/0120

Kongskilde Industries A/S

Tel.: +45 72 17 60 35

grain@kongskilde-industries.com

www.kongskilde-industries.com

K KONGSKILDE
Air solutions / your success