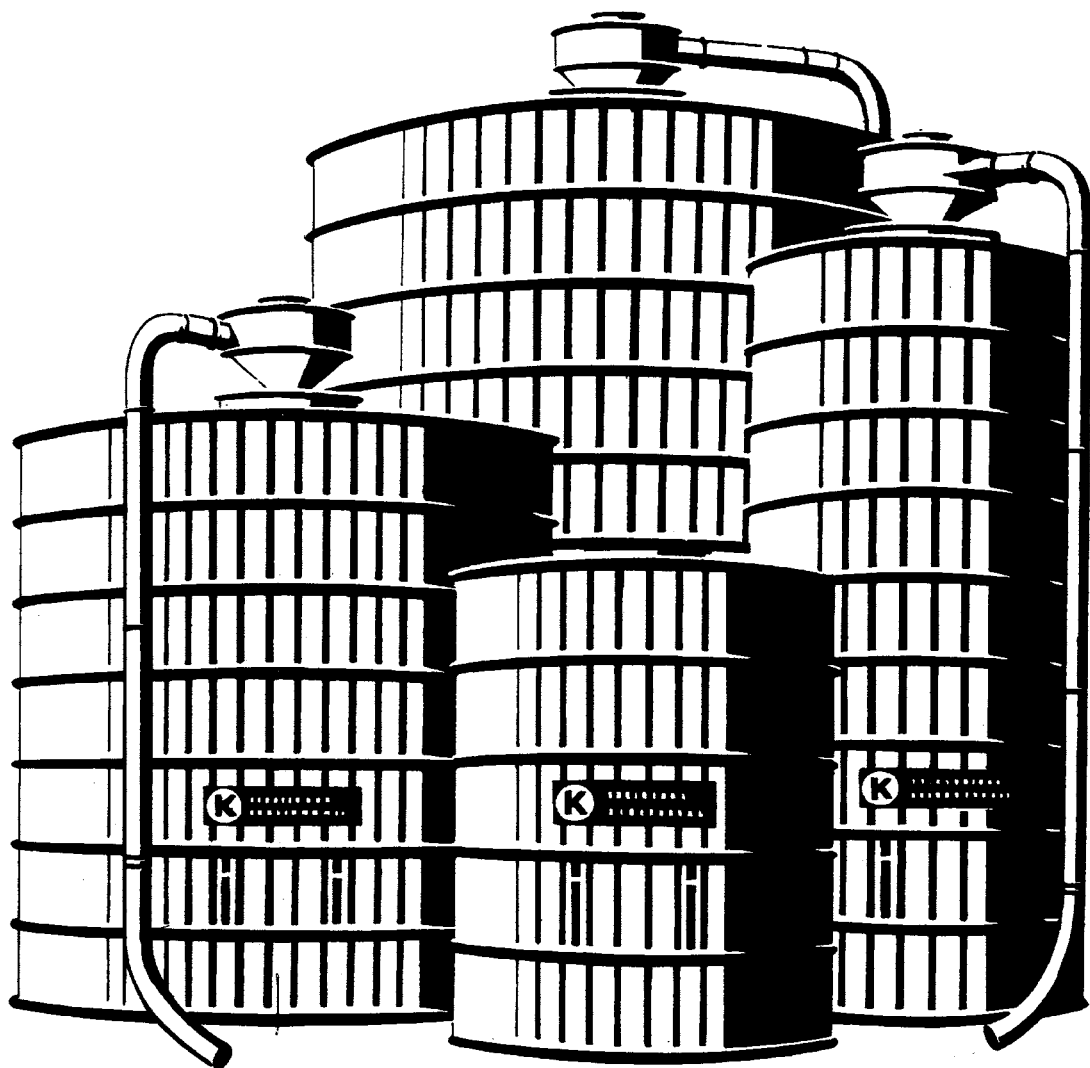
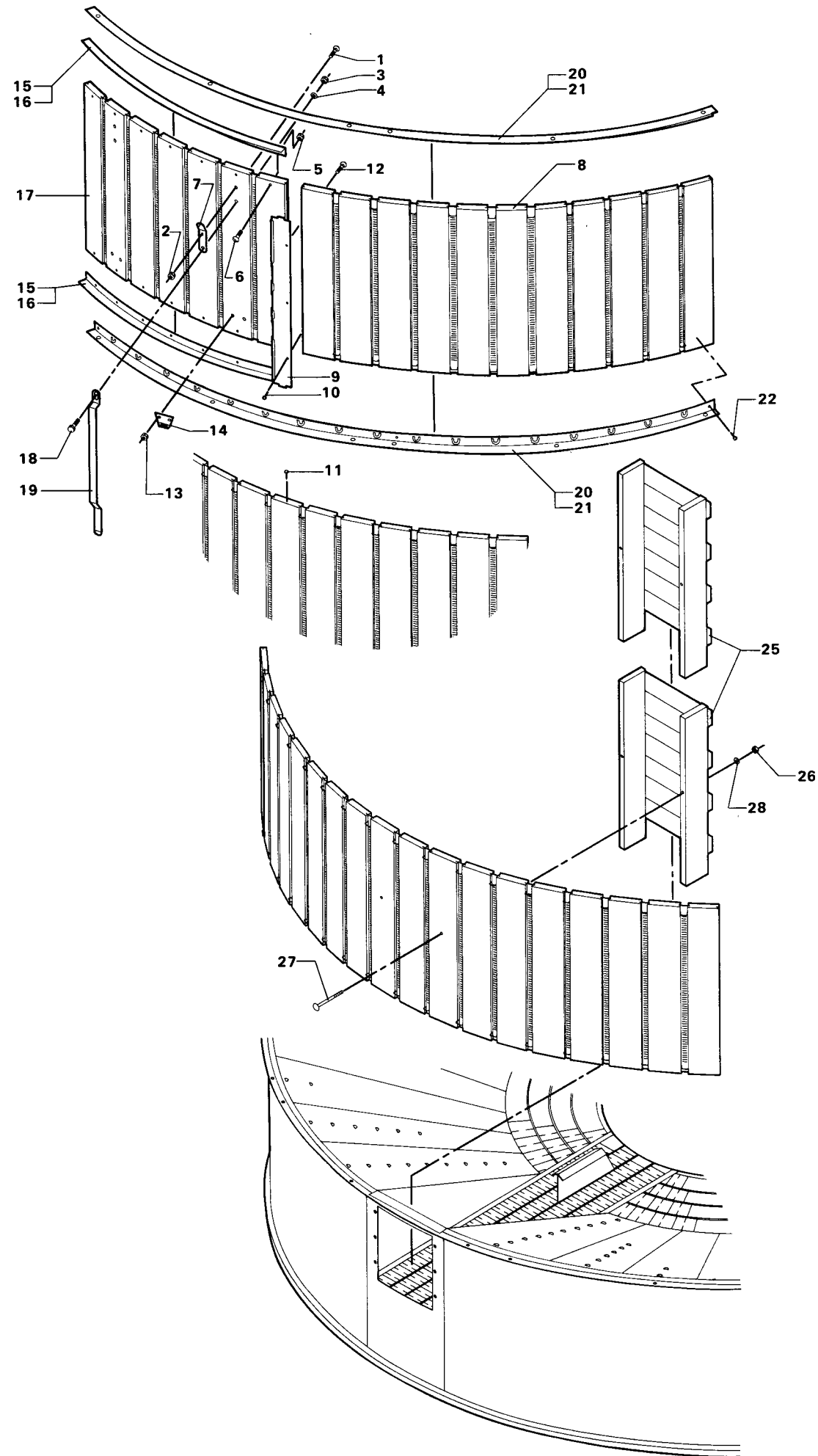


KCT

Grain Storage Silo



Spare parts list



Spare parts list / KCT. Date: 06.2018

Fig.	Serial no.	Part no.	Pieces	Notes
Cpl:		100 311 004	2	Fig. 1 + 2. M6 x 35 coach bolt
3		100 315 013	2	M10 nut
4		100 331 006	2	M10 flat washer
Cpl:		100 311 003	14	Fig. 5 + 6. M6 x 30 coach bolt
7		110 000 221	2	
8		110 000 036	1	Section of 22 mm board for access panel
9		110 000 074	2	
10		100 335 010	6	3/4" nr. 8 dome - top screw
11		100 335 000	2	18 mm
Cpl:		100 311 003	4	Fig. 12 + 13. M6 x 30 coach bolt
14		110 000 075	2	Steel band for access panel, dia. 2.0 m
15		110 002 023	2	Steel band for access panel, dia. 2.7 m
16		110 003 021	2	Steel band for access panel, dia. 2.7 m
17		110 000 030	1	Access panel of 22 mm boards
18		100 308 037	2	M10 x 40 set screw
19		110 000 222	2	Steel band, dia. 2.0 m
20		110 002 022	2	Steel band, dia. 2.7 m
21		110 003 020	2	Steel band, dia. 2.7 m
22		100 335 010	6	3/4" nr. 8 dome - top screw
Cpl:		110 000 007	2	Fig. 25 - 28. This part no. incl. 2 pcs. of emptying units
28		100 331 004	2	M6 flat washer
Cpl:		100 311 014	2	Fig. 26 + 27. M6 x 120 coach bolt

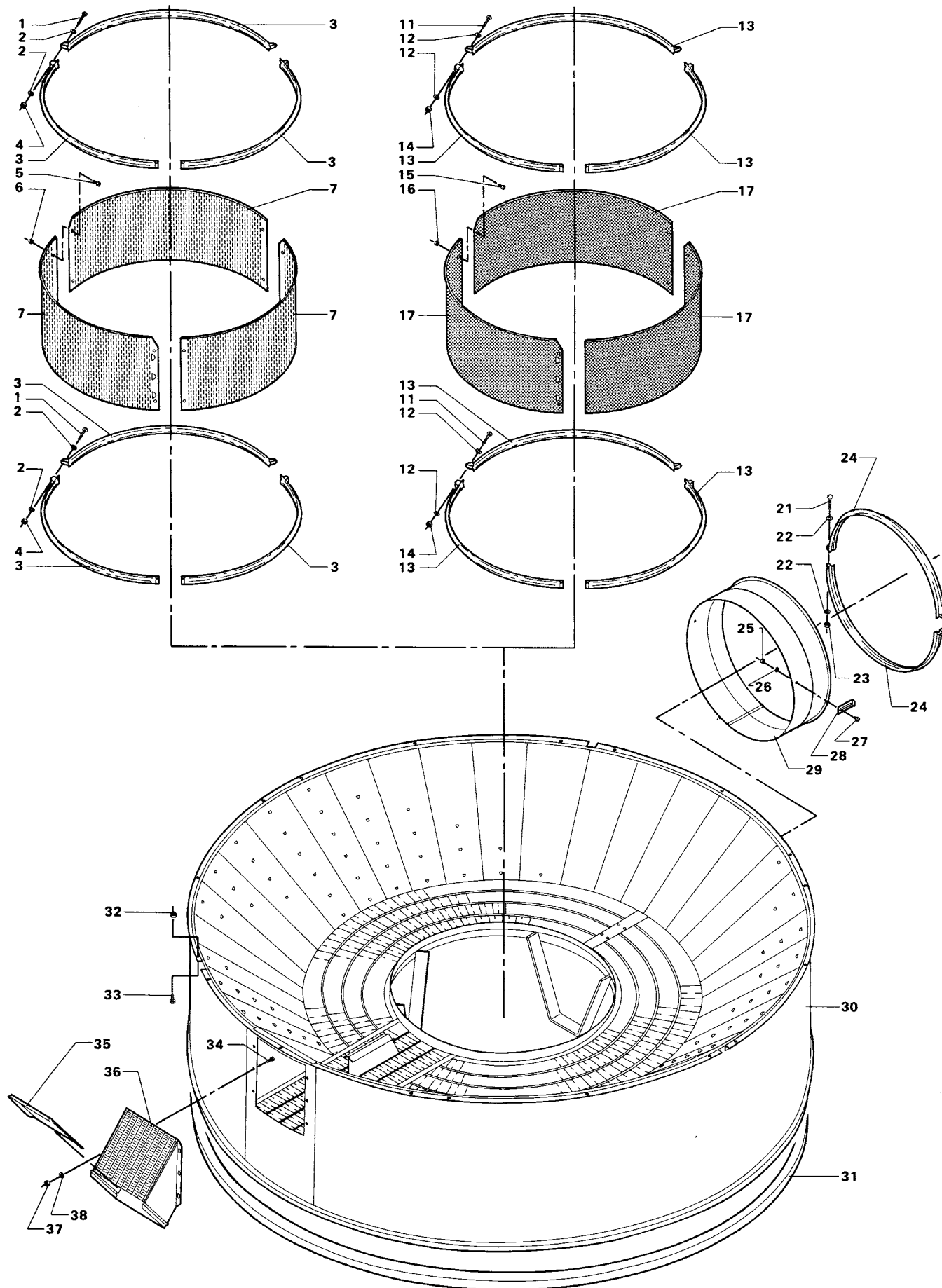


Fig.	Serial no.	Part no.	Pieces	Notes
1		100 323 001	6	M8 x 60 rdh. screw
2		100 331 013	12	1/4" flat washer
3		110 103 030	6	770 mm
4		100 315 012	6	M8 nut
5		100 321 013	6	M6 X 10 posi-drive screw
6		100 315 028	6	M6 nut
7		111 000 059	3	770 mm slotted perforated vent pipe
Cpl:		111 000 058	1	Fig. 1 - 7
11		100 323 001	3	M8 x 60 rdh. screw
12		100 331 013	6	1/4" flat washer
13		110 103 030	3	770 mm
14		100 315 012	3	M8 nut
15		100 321 013	6	M6 X 10 posi-drive screw
16		100 315 028	6	M6 nut
17		110 103 033	3	770 mm round perforated vent pipe
Cpl:		110 103 002	1	Fig. 11 - 17
21		100 323 001	2	M8 x 60 rdh. screw
22		100 331 013	4	1/4" flat washer
23		100 315 012	2	M8 nut
Cpl:		113 100 009	1	Fig. 21 - 24, 491 mm
25		100 315 028	2	M6 nut
26		100 331 004	2	M6 flat washer
27		100 321 014	2	M6 X 12 posi-drive screw
28		111 000 023	2	
29		111 000 042	1	
30		111 004 001	1	
31		111 004 019	1	
Cpl:		110 000 063	18	Fig. 32 + 33. Bolt with nut
34		100 321 014	6	M6 X 12 posi-drive screw
35		111 000 020	1	
36		111 000 015	1	
37		100 315 028	6	M6 nut
38		100 331 004	6	M6 flat washer

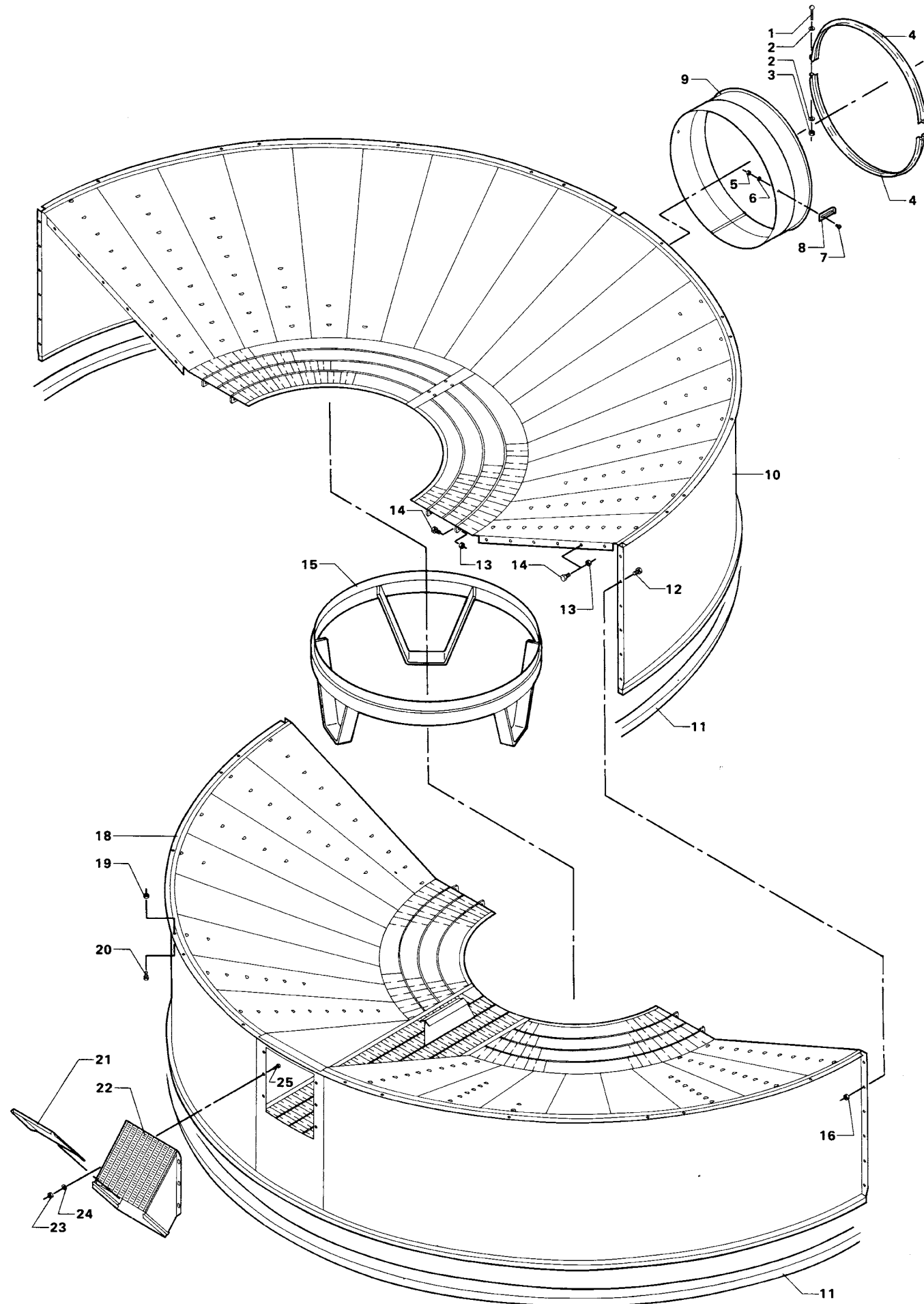


Fig.	Serial no.	Part no.	Pieces	Notes
Cpl:		113 100 009	1	Fig. 1 - 4
1		100 323 001	2	M8 x 60 rdh. screw
2		100 331 013	4	1/4" flat washer
3		100 315 012	2	M8 nut
5		100 315 028	2	M6 nut
6		100 331 004	2	M6 flat washer
7		100 321 014	2	M6 x 12 posi-drive screw
8		111 000 023	2	
9		111 000 042	1	
10		111 006 014	1	
11		111 006 020	1	
12		100 306 014	12	M8 x 15 set screw
13		100 315 013	16	M10 nut
14		100 308 004	16	M10 x 20 set screw
15		111 000 024	1	
16		100 315 012	12	M8 nut
18		111 006 001	1	
Cpl:		110 000 063	24	Fig. 19 + 20. Bolt with nut
21		111 000 020	1	
22		111 000 015	1	
23		100 315 028	6	M6 nut
24		100 331 004	6	M6 flat washer
25		100 321 014	6	M6 x 12 posi-drive screw

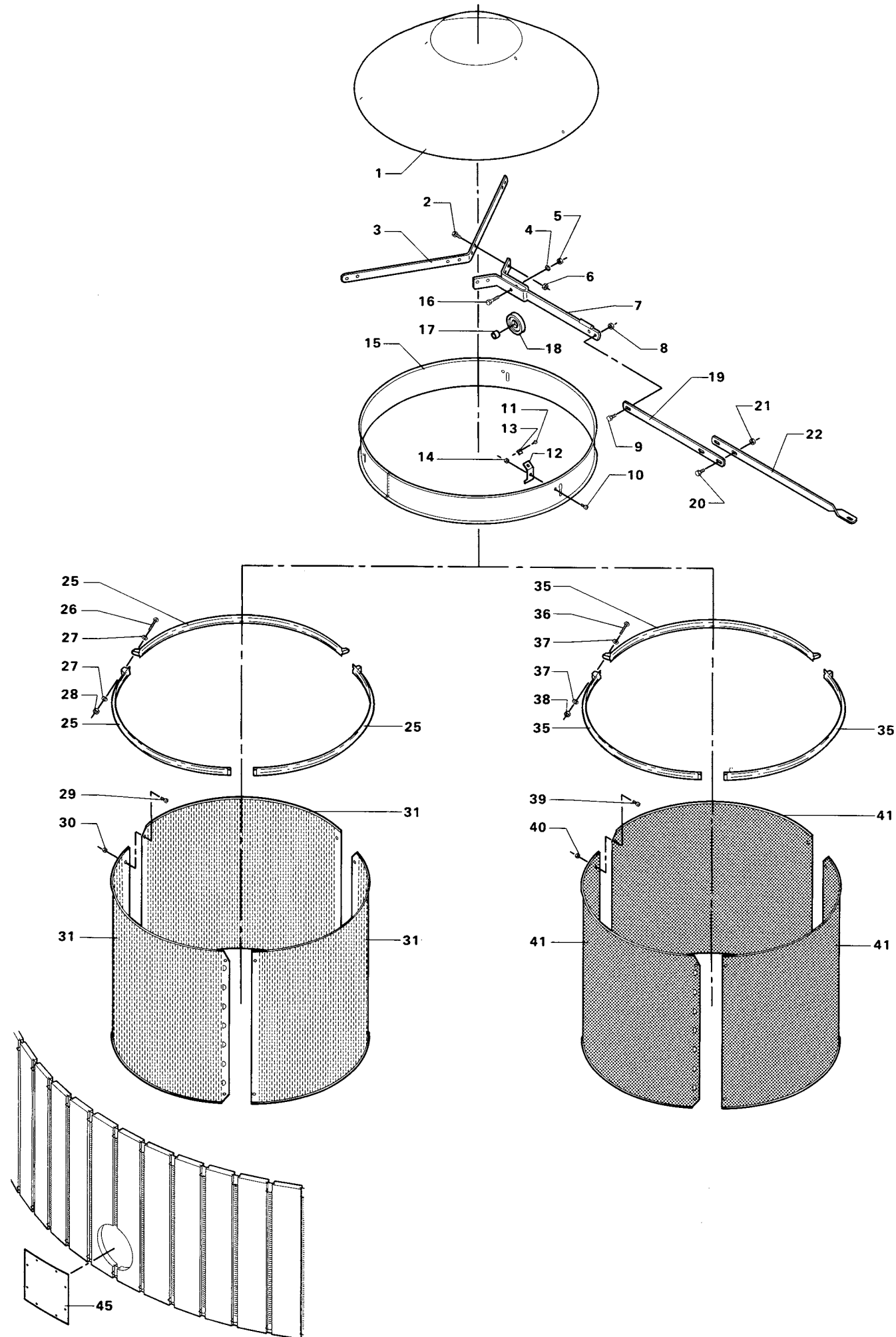


Fig.	Serial no.	Part no.	Pieces	Notes
1		110 103 046	1	
2		100 306 029	4	M10 x 25 set screw
3		110 103 045	1	
4		100 332 004	1	M10 star washer
5		100 315 013	1	M10 nut
6		100 315 013	4	M10 nut
7		110 103 043	1	
8		100 315 008	3	M10 nut
9		100 308 004	3	M10 x 20 set screw
10		100 321 021	3	M8 x 15 posi-drive screw
11		100 323 018	3	1/2" no. 10 self-tapping screw
12		110 100 042	3	
13		100 323 010	3	
14		100 315 012	3	M8 nut
15		110 103 038	1	
16		100 304 024	1	M10 x 35 set screw
17		110 100 139	1	
18		101 050 102	1	
19		110 100 131	3	456 mm. Only for 2.7 m silo
20		100 308 004	6	M10 x 20 set screw
21		100 315 013	6	M10 nut
22		110 103 092	3	661 mm. For 2.0 m and 2.7 m silo
25		110 103 030	3	770 mm
26		100 323 001	3	M8 x 60 rdh. screw
27		100 331 013	6	1/4" flat washer
28		100 315 012	3	M8 nut
29		100 321 013	6	M6 x 10 posi-drive screw
30		100 315 028	6	M6 nut
31		110 103 176	3	770 mm slotted perforated vent pipe
Cpl:		110 103 175	1	Fig. 25 - 31
35		110 103 030	3	770 mm
36		100 323 001	3	M8 x 60 rdh. screw
37		100 331 013	6	1/4" flat washer
38		100 315 012	3	M8 nut
39		100 321 013	6	M6 x 10 posi-drive screw
40		100 315 028	6	M6 nut
41		110 103 033	3	770 mm round-perforated vent pipe
Cpl:		110 103 002	1	Fig. 35 - 41
45		110 100 014	1	

Kongskilde Industries A/S

Skælskørvej 64

DK - 4180 Sorø

Tel. +45 72 17 60 00

mail@kongskilde-industries.com

www.kongskilde-industries.com